



NOTES

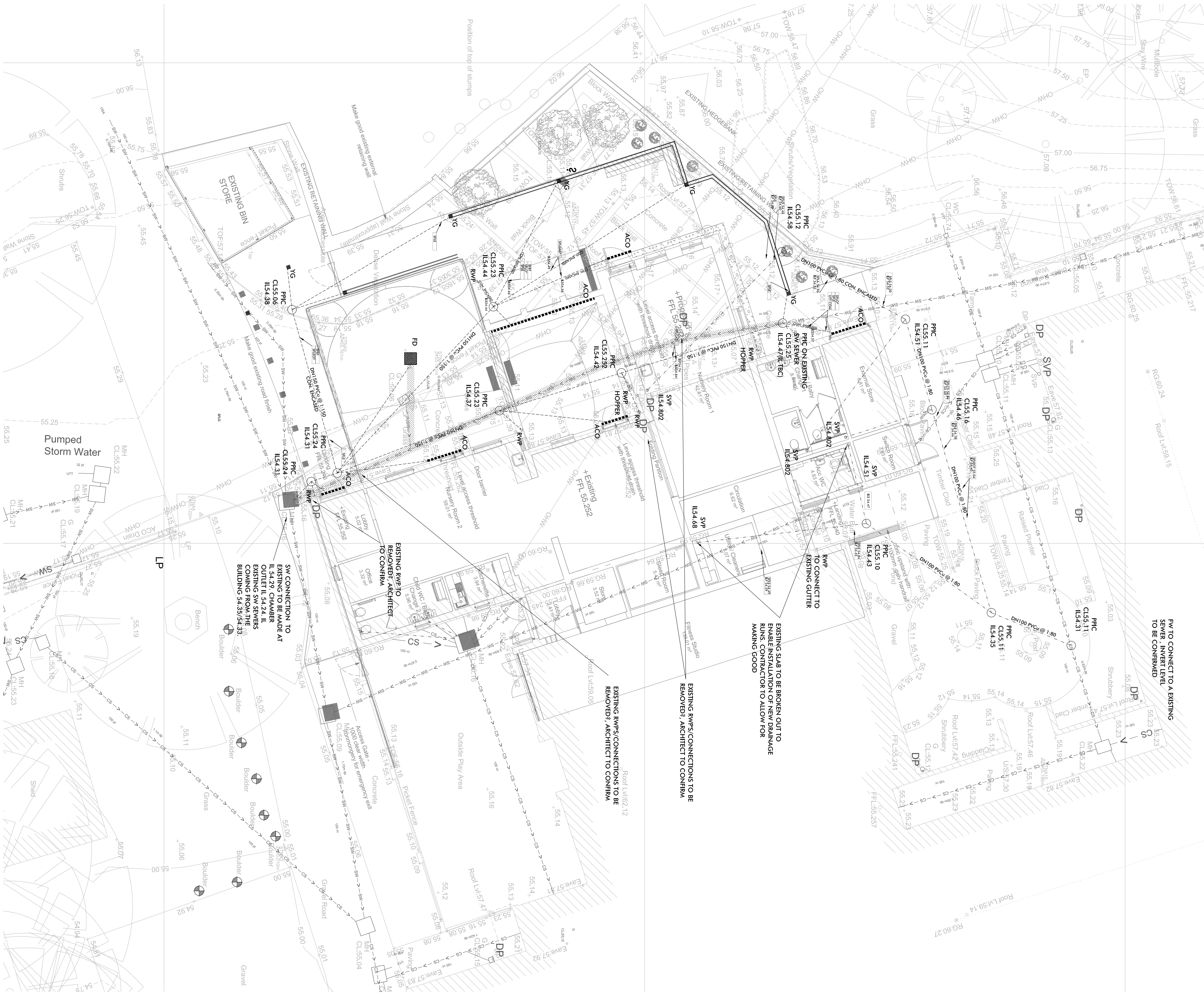
- 1 THIS DRAWING IS NOT TO BE USED FOR CONSTRUCTION UNLESS MARKED ABOVE 'FOR CONSTRUCTION'
- 2 THE COPYRIGHT ON THIS DRAWING IS RETAINED BY MICHAEL BEARDSALL ASSOCIATES LTD
- 3 THIS DRAWING IS TO BE READ IN CONJUNCTION WITH ALL SPECIFICATIONS, CONDITIONS OF CONTRACT AND ENGINEERS DRAWINGS AND NOTATIONS
- 4 THE CONTRACTOR IS RESPONSIBLE FOR ALL DIMENSIONS AND THE CORRECT SETTING OUT ON SITE. ONLY FIGURED DIMENSIONS ARE TO BE USED DO NOT SCALE - IF IN DOUBT ASK
- 5 ALL MATERIALS AND WORKMANSHIP TO COMPLY WITH THE CURRENT BRITISH STANDARDS AND CODES OF PRACTICE

PRIVATE DRAINAGE


- 6 BUILDING DRAINAGE TO BUILDING REGULATIONS PART H, UNLESS OTHERWISE NOTED
- 7 ALL BUILDING DRAINAGE NOT IN ROAD TO BE DN100 PLASTIC UNLESS OTHERWISE NOTED
- 8 ALL BUILDING DRAINAGE IN ROAD TO BE DN150 STRUCTURED WALL PLASTIC UNLESS OTHERWISE NOTED
- 9 ALL BUILDING FOUL DRAINAGE AT GRADIENTS NOT FLATTER THAN 1:40 UNLESS OTHERWISE NOTED
- 10 ALL BUILDING SURFACE DRAINAGE AT GRADIENTS NOT FLATTER THAN 1:100
- 11 UNDER GARDENS WITH 0.6m COVER OR MORE CLASS P FULL DEPTH GRANULAR SUPPORT, SINGLE SIZE MATERIAL ONLY (CLAUSE 603)
- 12 UNDER GARDENS WITH LESS THAN 0.6m COVER CLASS 0 GRANULAR SURROUND WITH PROTECTION (CLAUSE 605)
- 13 UNDER SOLID GROUND FLOORS 0.2m OR MORE FROM UNDERSIDE MATERIAL ONLY (CLAUSE 623) SURROUND, SINGLE SIZE
- 14 UNDER SOLID GROUND 0.2m OR LESS FROM UNDERSIDE GRANULAR SURROUND WITH PROTECTION (CLAUSE 623) SURROUND, SINGLE SIZE
- 15 PIPE RUNS NEAR FOUNDATIONS CLASS 2 CONCRETE SURROUND (CLAUSES 676)
- 16 UNDER ROADS AND CONSTRUCTED UNDER STEPS CLASS 0 FULL DEPTH GRANULAR SUPPORT, SINGLE SIZE MATERIAL ONLY (CLAUSE 661)
- 17 FOR PREFORMED POLYPROPYLENE MANHOLES AND BRANCHES, MAIN CHANNEL TO BE USED FOR MAIN FLOW. ALL SPARE INLETS (SUPPERS) TO BE PROPERLY CAPPED OFF.
- 18 WHERE REQUIRED BENDS ON BUILDING DRAINAGE RUNS MUST BE LOCATED IMMEDIATELY OUTSIDE CHAMBERS AND ACCESS POINTS.

PRIVATE DRAINAGE KEY	
100/150mm	SURFACE WATER DRAIN, R12/346
100mm	FOUL WATER DRAIN, R12/346
PPC	POLYPROPYLENE INSULATION CHAMBER (PPIC) 4000 DETAIL ON MBA DWG. 16240.210, R12/401
RWP	REST BRAND (RAINWATER PIPE) DETAIL ON MBA DWG. 16240.210, R12/691
SVF	REST BRAND (SOIL AND VENT PIPE) DETAIL ON MBA DWG. 16240.210, R12/691
TD	THRESHOLD DRAIN, PLEASE REFER TO ARCHITECTS DOOR THRESHOLD DETAILS NOT TO CONNECT TO MAIN DRAINAGE SYSTEM
ACO	ACO DRAIN DETAIL ON MBA DWG. 16240.210-R-12-316-3100 RANGE
DISHED CHANNEL	440 X 130 PC DISHED CHANNEL / CAST IN SITU DISHED CHANNEL, DIMS REVISED TO SUIT GRATING TYPE 16240.210
100mm VC	VAPOUR CUTOFF 16240.210, R12/315
FD	FRENCH DRAIN (DRAINING) 16240.210, R12-
	DENOTES EXISTING SW SEWER TO BE REMOVED

NOTE:
EXISTING INVERT LEVELS TO BE SURVEYED PRIOR TO COMMENCEMENT OF DRAINAGE WORKS ON SITE.
UNTIL THESE ARE CONFIRMED, DRAINAGE DESIGN IS IN ABBREVIATION



PROPOSED DRAINAGE LAYOUT
SCALE 1:100

JOB TITLE:		LAV DF	
CARN GWYDAL		LAV MP	
CHURCH ROAD, ST. MARY'S		LAV MP	
ISLES OF SOLLY.		LAV MP	
CORNWALL		LAV MP	
CLIENT:		BY	
		CHK	
CONSULTANT			
STANDARD			
SCALE OF SCALE			
1:100			
DATE:			
OCT. 2017			
JOB NO.			
16240			
DRAWING No.			
200			
REV:			
A1			
DATE:			
OCT. 2017			
JOB NO.			
16240			
DRAWING No.			
200			
REV:			
A1			
DATE:			
OCT. 2017			
JOB NO.			
16240			
DRAWING No.			
200			
REV:			
A1			
DATE:			
OCT. 2017			
JOB NO.			
16240			
DRAWING No.			
200			
REV:			
A1			
DATE:			
OCT. 2017			
JOB NO.			
16240			
DRAWING No.			
200			
REV:			
A1			
DATE:			
OCT. 2017			
JOB NO.			
16240			
DRAWING No.			
200			
REV:			
A1			
DATE:			
OCT. 2017			
JOB NO.			
16240			
DRAWING No.			
200			
REV:			
A1			
DATE:			
OCT. 2017			
JOB NO.			
16240			
DRAWING No.			
200			
REV:			
A1			
DATE:			
OCT. 2017			
JOB NO.			
16240			
DRAWING No.			
200			
REV:			
A1			
DATE:			
OCT. 2017			
JOB NO.			
16240			
DRAWING No.			
200			
REV:			
A1			
DATE:			
OCT. 2017			
JOB NO.			
16240			
DRAWING No.			
200			
REV:			
A1			
DATE:			
OCT. 2017			
JOB NO.			
16240			
DRAWING No.			
200			
REV:			
A1			
DATE:			
OCT. 2017			
JOB NO.			
16240			
DRAWING No.			
200			
REV:			
A1			
DATE:			
OCT. 2017			
JOB NO.			
16240			
DRAWING No.			
200			
REV:			
A1			
DATE:			
OCT. 2017			
JOB NO.			
16240			
DRAWING No.			
200			
REV:			
A1			
DATE:			
OCT. 2017			
JOB NO.			
16240			
DRAWING No.			
200			
REV:			
A1			
DATE:			
OCT. 2017			
JOB NO.			
16240			
DRAWING No.			
200			
REV:			
A1			
DATE:			
OCT. 2017			
JOB NO.			
16240			
DRAWING No.			
200			
REV:			
A1			
DATE:			
OCT. 2017			
JOB NO.			
16240			
DRAWING No.			
200			
REV:			
A1			
DATE:			
OCT. 2017			
JOB NO.			
16240			
DRAWING No.			
200			
REV:			
A1			
DATE:			
OCT. 2017			
JOB NO.			
16240			
DRAWING No.			
200			
REV:			
A1			
DATE:			
OCT. 2017			
JOB NO.			
16240			
DRAWING No.			
200			
REV:			
A1			
DATE:			
OCT. 2017			
JOB NO.			
16240			
DRAWING No.			
200			
REV:			
A1			
DATE:			
OCT. 2017			
JOB NO.			
16240			
DRAWING No.			
200			
REV:			
A1			
DATE:			
OCT. 2017			
JOB NO.			
16240			
DRAWING No.			
200			
REV:			
A1			
DATE:			
OCT. 2017			
JOB NO.			
16240			
DRAWING No.			
200			
REV:			
A1			
DATE:			
OCT. 2017			
JOB NO.			
16240			
DRAWING No.			
200			
REV:			
A1			
DATE:			
OCT. 2017			
JOB NO.			
16240			
DRAWING No.			
200			
REV:			
A1			
DATE:			
OCT. 2017			
JOB NO.			
16240			
DRAWING No.			
200			
REV:			
A1			
DATE:			
OCT. 2017			
JOB NO.			
16240			
DRAWING No.			
200			
REV:			
A1			
DATE:			
OCT. 2017			
JOB NO.			
16240			
DRAWING No.			
200			
REV:			
A1			
DATE:			
OCT. 2017			
JOB NO.			
16240			
DRAWING No.			
200			
REV:			
A1			
DATE:			
OCT. 2017			
JOB NO.			
16240			
DRAWING No.			
200			
REV:			
A1			
DATE:			
OCT. 2017			
JOB NO.			
16240			
DRAWING No.			
200			
REV:			
A1			
DATE:			
OCT. 2017			
JOB NO.			
16240			
DRAWING No.			
200			
REV:			
A1			
DATE:			
OCT. 2017			
JOB NO.			
16240			
DRAWING No.			
200			
REV:			
A1			
DATE:			
OCT. 2017			
JOB NO.			
16240			
DRAWING No.			
200			
REV:			
A1			
DATE:			
OCT. 2017			
JOB NO.			
16240			
DRAWING No.			
200			
REV:			
A1			
DATE:			
OCT. 2017			
JOB NO.			
16240			
DRAWING No.			
200			
REV:			
A1			
DATE:			
OCT. 2017			
JOB NO.			
16240			
DRAWING No.			
200			
REV:			
A1			
DATE:			
OCT. 2017			
JOB NO.			
16240			
DRAWING No.			
200			
REV:			
A1			
DATE:			
OCT. 2017			
JOB NO.			
16240			
DRAWING No.			
200			
REV:			
A1			
DATE:			
OCT. 2017			
JOB NO.			
16240			
DRAWING No.			
200			
REV:			
A1			
DATE:			
OCT. 2017			
JOB NO.			
16240			
DRAWING No.			
200			
REV:			
A1			
DATE:			
OCT. 2017			
JOB NO.			
16240			
DRAWING No.			
200			
REV:			
A1			
DATE:			
OCT. 2017			
JOB NO.			
16240			
DRAWING No.			
200			
REV:			
A1			
DATE:			
OCT. 2017			
JOB NO.			
16240			
DRAWING No.			
200			
REV:			
A1			
DATE:			
OCT. 2017			
JOB NO.			
16240			
DRAWING No.			
200			
REV:			
A1			
DATE:			
OCT. 2017			
JOB NO.			
16240			
DRAWING No.			
200			
REV:			
A1			
DATE:			
OCT. 2017			
JOB NO.			
16240			
DRAWING No.			
200			
REV:			
A1			
DATE:			
OCT. 2017			
JOB NO.			
16240			
DRAWING No.			
200			
REV:			
A1			
DATE:			
OCT. 2017			
JOB NO.			
16240			
DRAWING No.			
200			
REV:			
A1			
DATE:			
OCT. 2017			
JOB NO.			
16240			
DRAWING No.			
200			
REV:			
A1			
DATE:			
OCT. 2017			
JOB NO.			
16240			
DRAWING No.			
200			
REV:			
A1			
DATE:			
OCT. 2017			
JOB NO.			
16240			
DRAWING No.			
200			
REV:			
A1			
DATE:			
OCT. 2017			
JOB NO.			
16240			
DRAWING No.			
200			
REV:			
A1			
DATE:			
OCT. 2017			
JOB NO.			
16240			
DRAWING No.			
200			
REV:			
A1			
DATE:			
OCT. 2017			
JOB NO.			
16240			
DRAWING No.			
200			
REV:			
A1			
DATE:			
OCT. 2017			
JOB NO.			
16240			
DRAWING No.			
200			
REV:			
A1			
DATE:			
OCT. 2017			
JOB NO.			
16240			
DRAWING No.			
200			
REV:			
A1			
DATE:			
OCT. 2017			
JOB NO.			
16240			
DRAWING No.			
200			
REV:			
A1			
DATE:			
OCT. 2017			
JOB NO.			
16240			
DRAWING No.			
200			
REV:			
A1			
DATE:			
OCT. 2017			
JOB NO.			
16240			
DRAWING No.			
200			
REV:			
A1			
DATE:			
OCT. 2017			
JOB NO.			
16240			
DRAWING No.			
200			
REV:			
A1			
DATE:			
OCT. 2017			
JOB NO.			
16240			
DRAWING No.			
200			
REV:			
A1			
DATE:			
OCT. 2017			
JOB NO.			
16240			
DRAWING No.			
200			
REV:			
A1			
DATE:			
OCT. 2017			
JOB NO.			
16240			
DRAWING No.			
200			
REV:			
A1			
DATE:			
OCT. 2017			
JOB NO.			
16240			
DRAWING No.			
200			
REV:			
A1			
DATE:			
OCT. 2017			