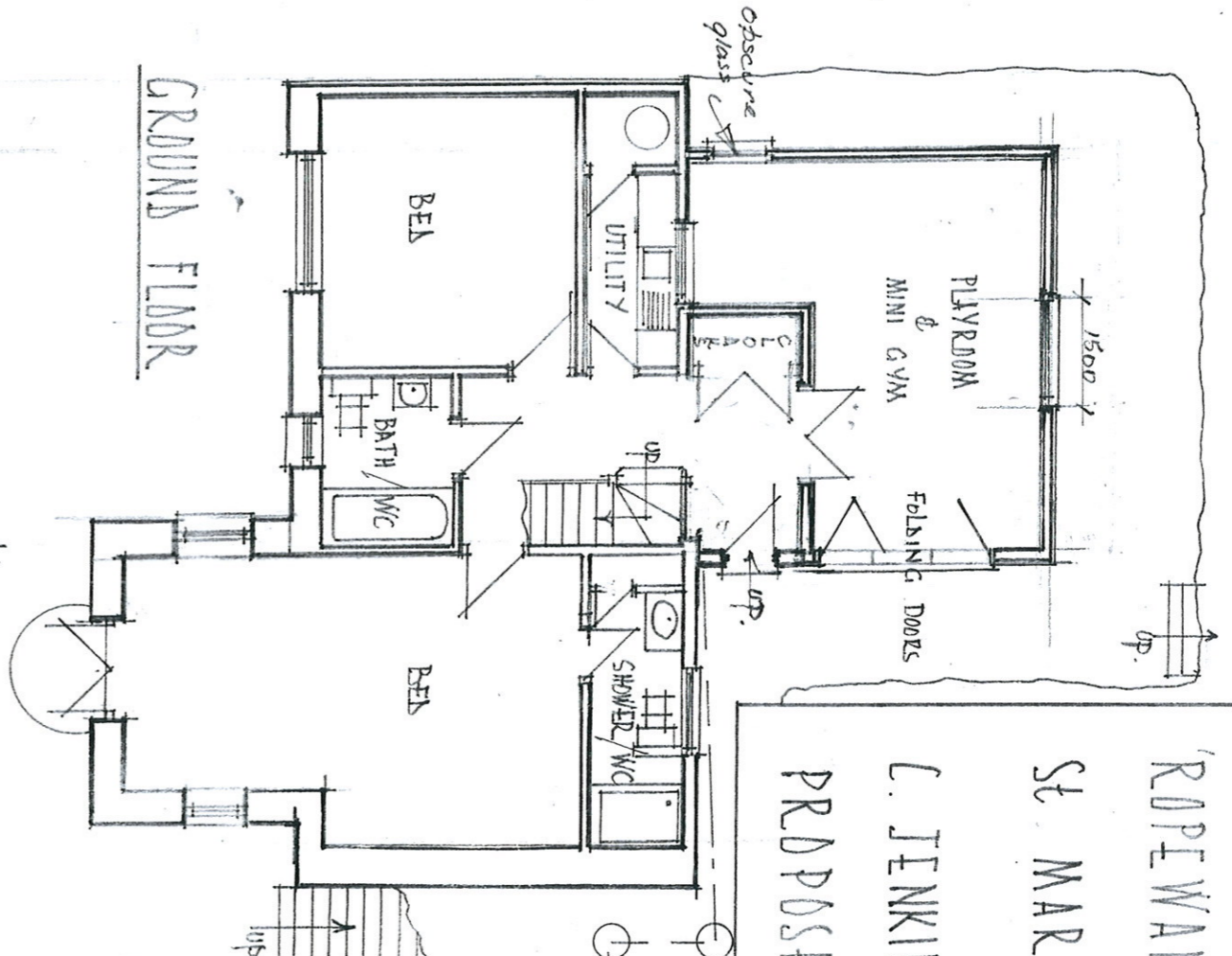
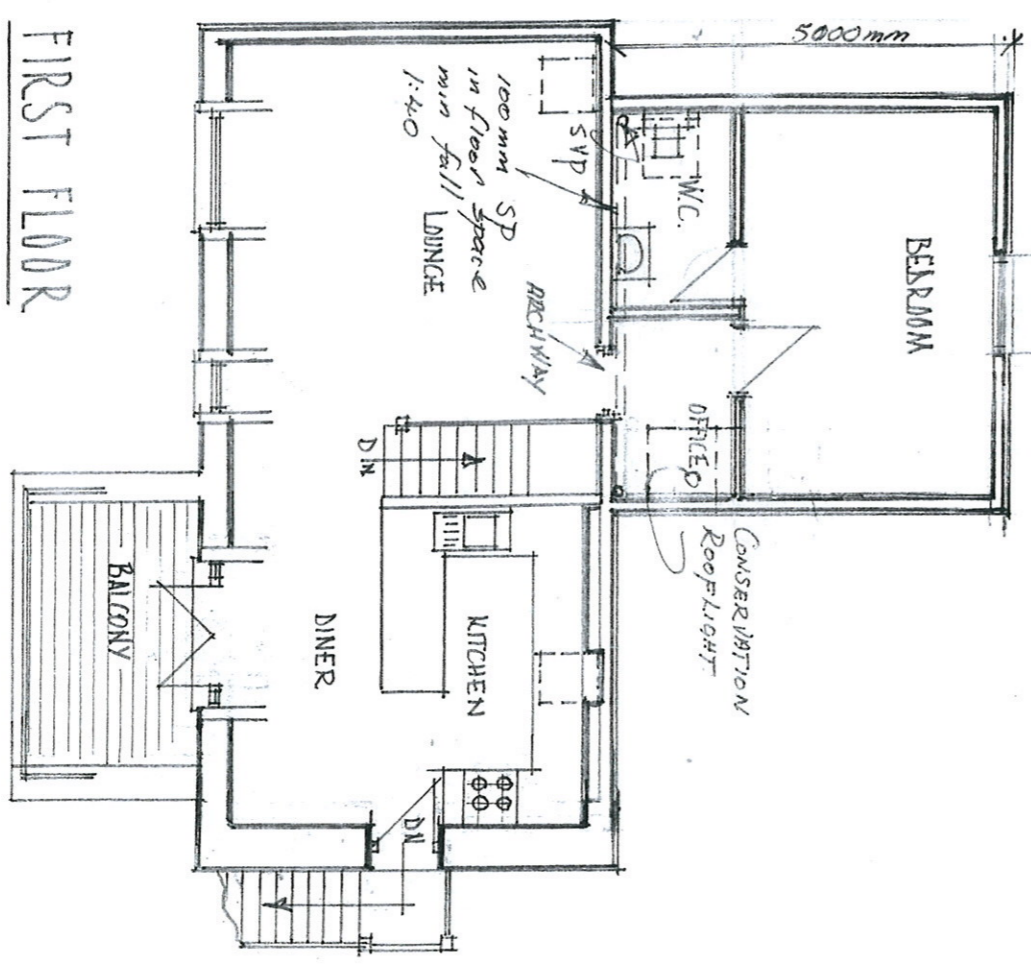


'ROPEWALK' PORTHLOO
ST. MARYS
C. JENKINS & A. HIRON
PROPOSED REAR EXTENSION



GROUND FLOOR

AMENDED PLANS



FIRST FLOOR

I. J. HIRON ARCHS
CLDWISLEY
ST. MARYS
tel 01726 422563

KATE OCTOBER 2012
AMENDED DEC 2012
SCALE 1:100

AJ-R-2B