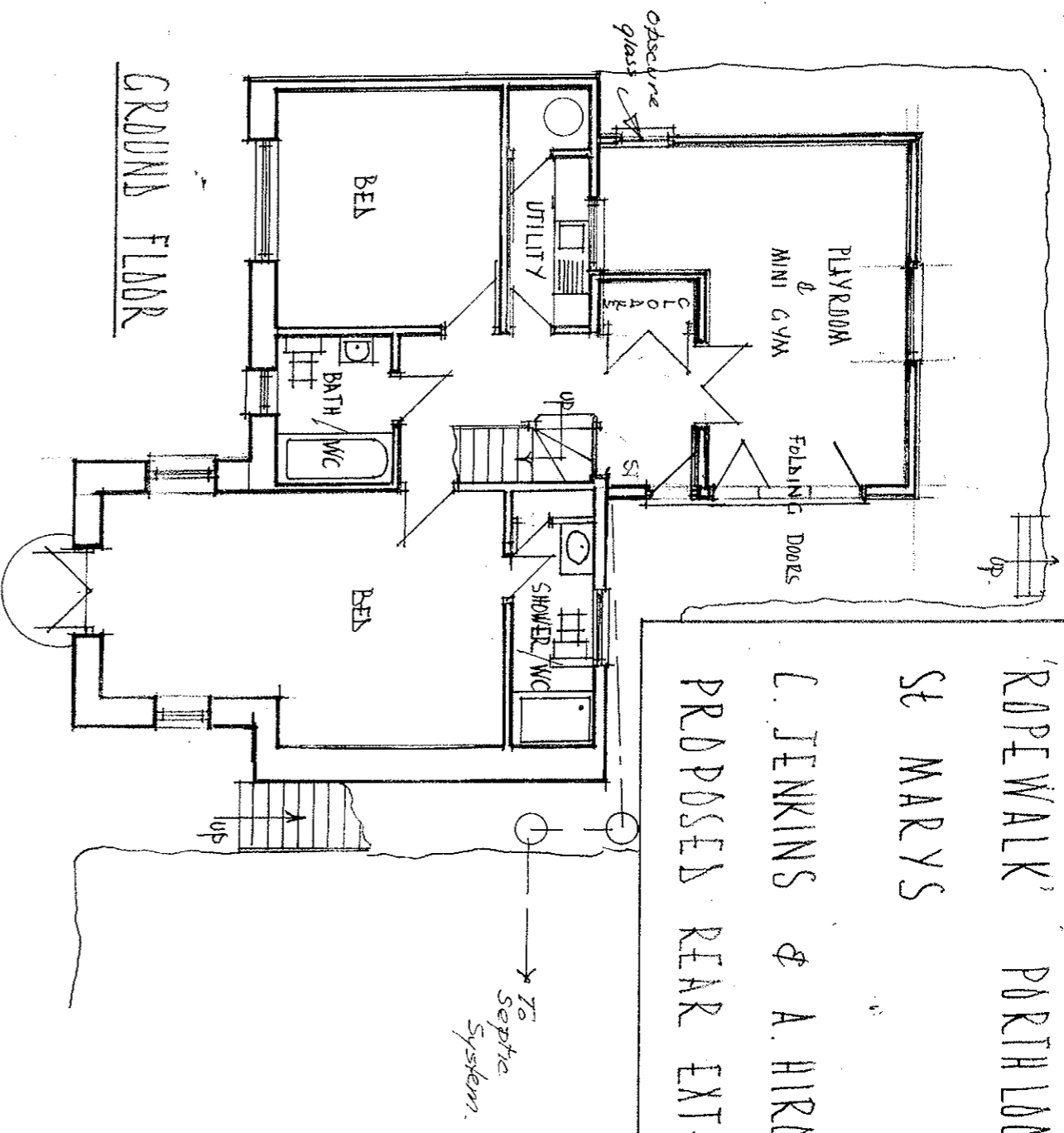
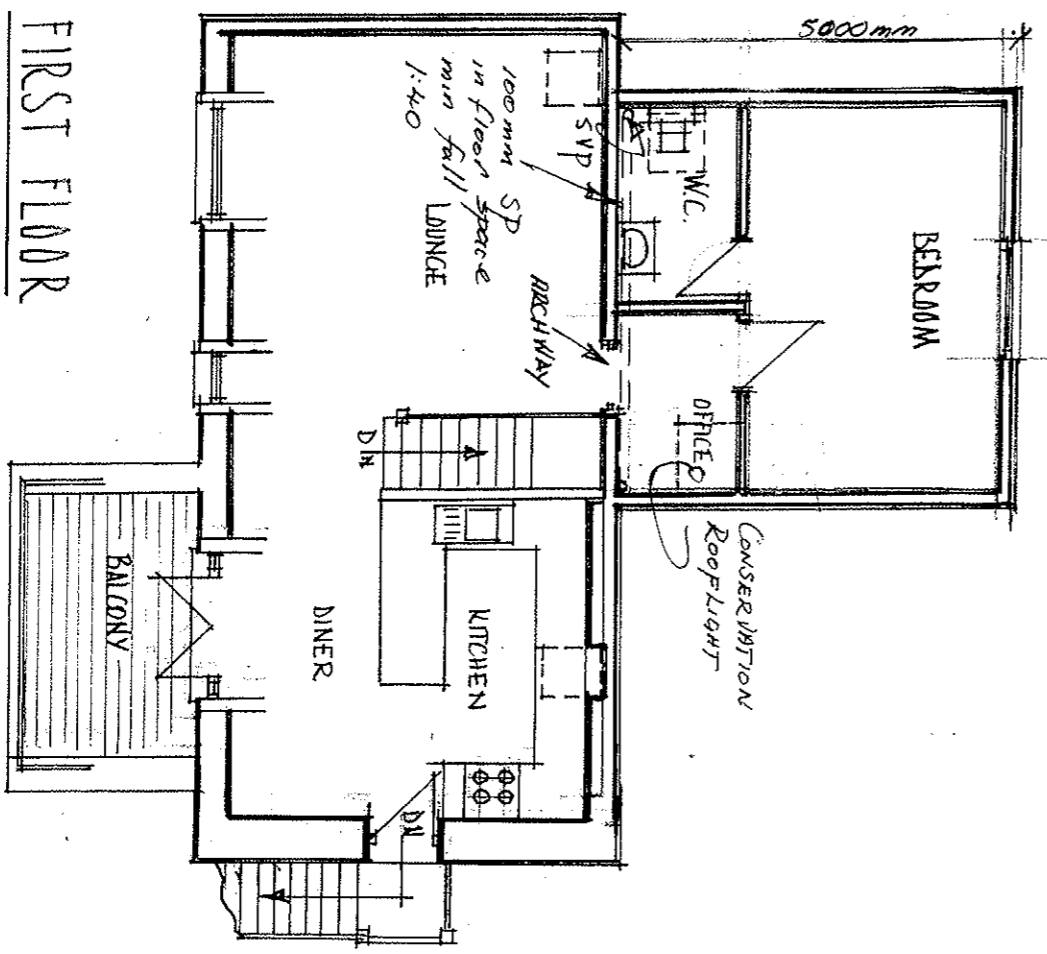


'ROPEWALK' PARTIAL
ST MARYS
C. JENKINS & A. HIRON
PROPOSED REAR EXTENSION



GROUND FLOOR



FIRST FLOOR

I. J. HIRON ARCHS
CLDWISLEY
ST MARYS
tel 01720 422563

DATE OCTOBER 2012
SCALE 1:100
Amended DEC 2012

HJ-R-2A