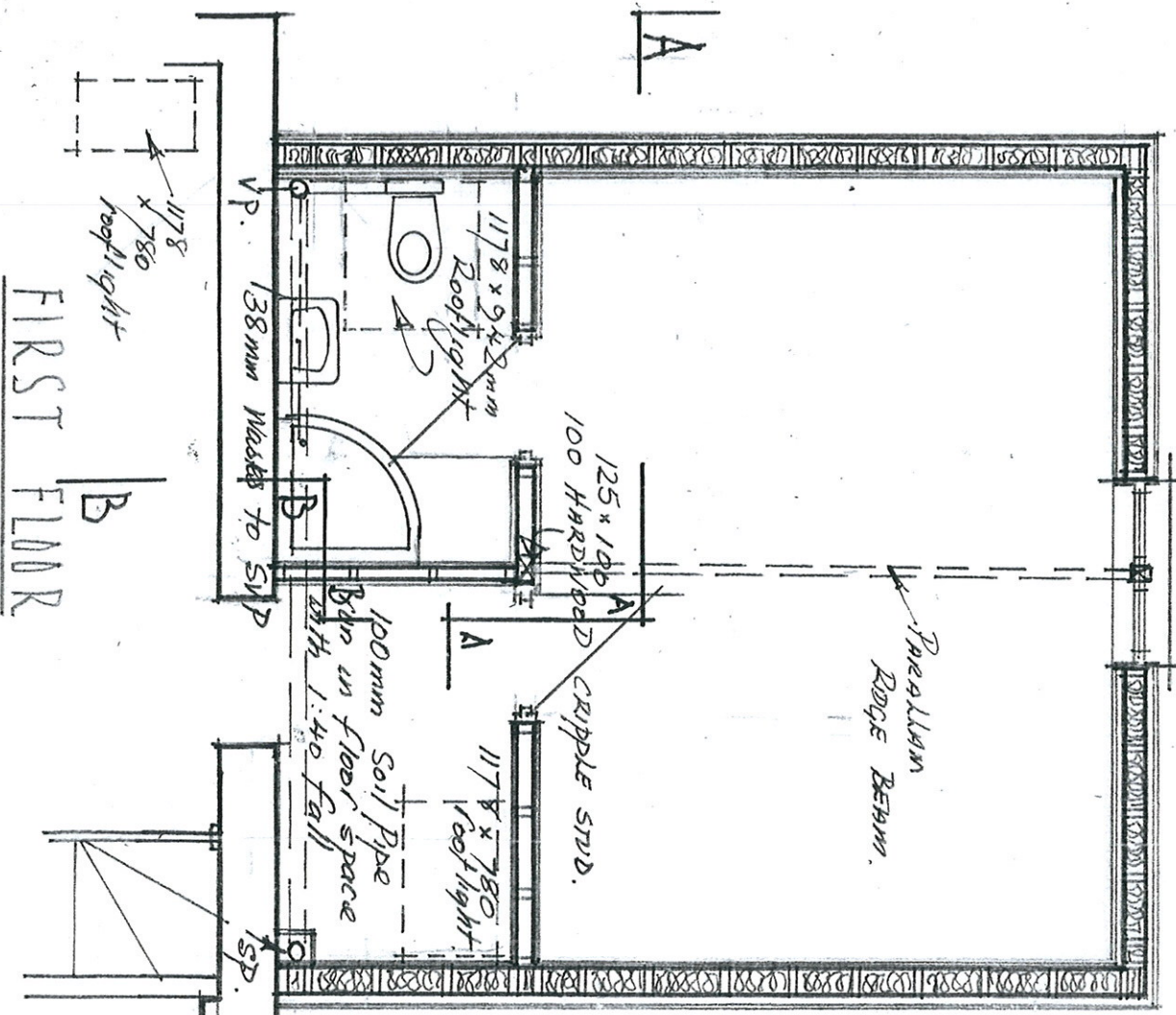


GROUND FLOOR



FIRST FLOOR

'ROPEWALK'  
PORTHLOD, St MARY'S  
PROPOSED AMENDED  
REAR EXTENSION  
C. JENKINS &  
A. HIRDON

DATE - AUGUST 2014  
SCALE - 1:50

Sound insulation - In partitions  
Fit sound insulation quilt between  
studling

Lighting - All pendant fittings to  
have compact fluorescent, low  
voltage bulbs. Elsewhere 12v  
downlight fittings are to be  
installed (Efficiency of not less than  
40 lumens per circuit-watt per  
every 4 fixed fittings or 25m<sup>2</sup>)

Inspections. A record of site  
inspections carried out by the builder  
will be produced on completion,  
confirming construction has been  
carried out in accord with  
approved drawings or schedule.

H.J. R. 8