

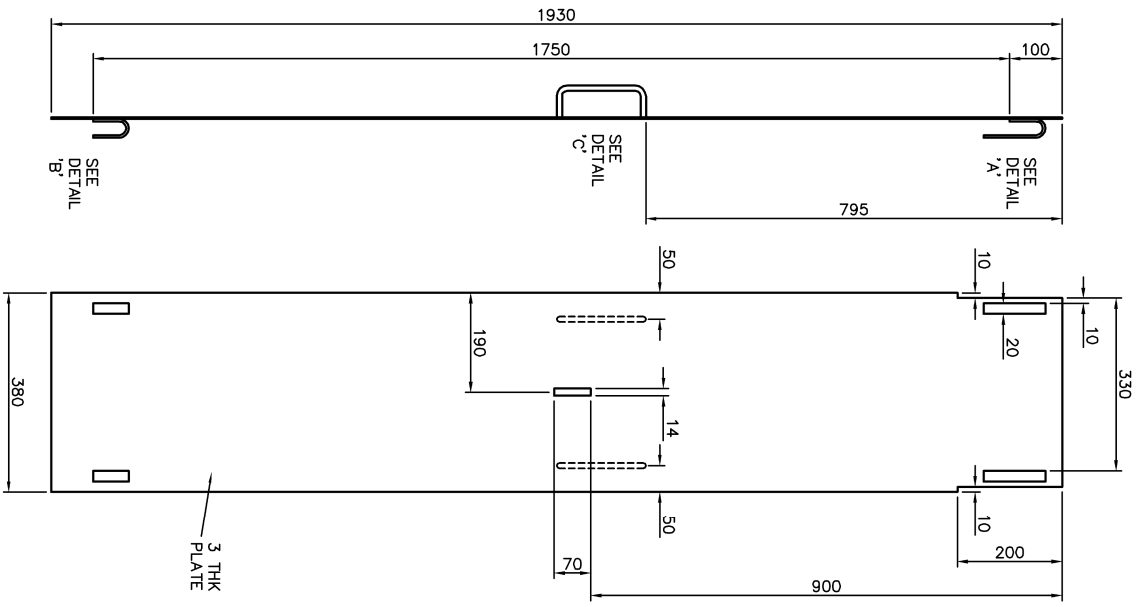
Statement to Council of the Isles of Scilly in support of planning application reference P/14/030 – Fire Station, Churchtown, St Martin’s, Isles of Scilly.

Condition 6. Details of Groundworks and foundations. Consultation, English Heritage.

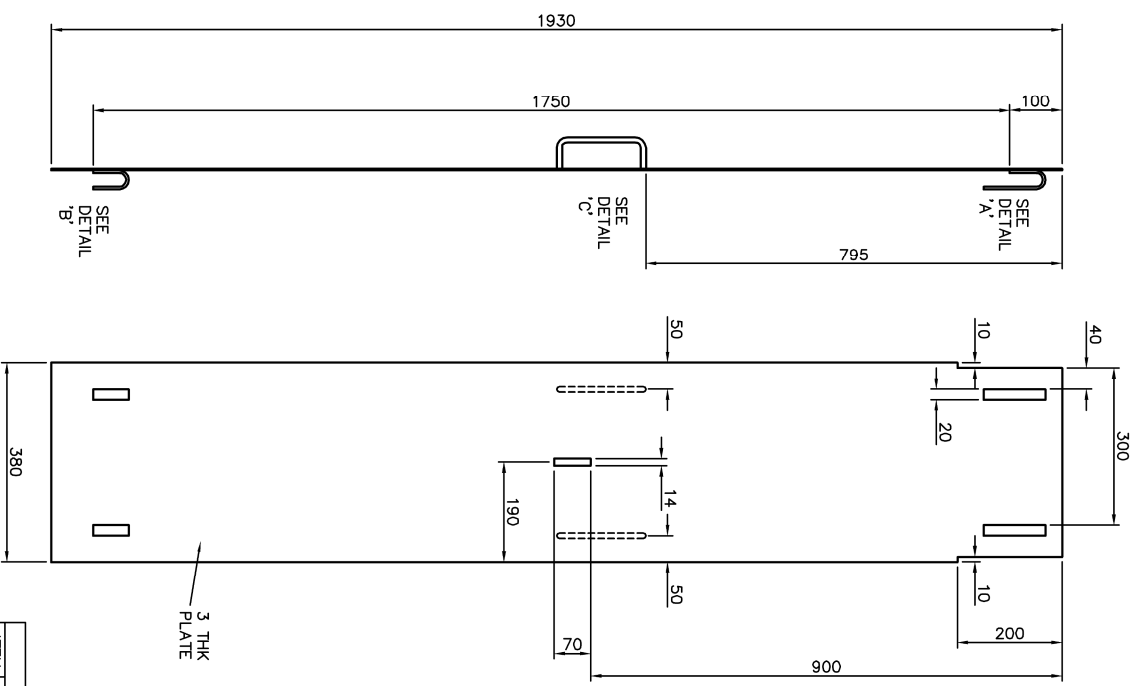
The tower is of a generic open lattice design, for which the chosen supplier has provided indicative loads imposed on the foundation. From these imposed tower loads a foundation is currently being designed to suit the expected ground conditions, derived from knowledge shared by a contractor based on St Mary’s. The foundation is proposed to be approx. 1.75m square in plan, and 1.1m deep. The footprint of the foundation, as shown on the planning application drawing WL4004628 sht 2 is contained within an area that is understood to be landscaped ground following construction of the adjacent fire station building. Information from the contractor suggests that this landscaped ground extends down to approx 1m deep before a shallow layer of fractured rock is encountered. The proposal is to excavate down to the fractured rock and level this off to cast the foundation, with the top surface of the foundation (tower datum) thus being slightly (approx. 100mm to 200mm) above the surrounding general ground level. The area to be excavated for the foundation will be approx. 2m square, the voids around the cast foundation being backfilled with the excavated material.

In addition to the excavation for the tower foundation, a trench will be dug between the tower and the DSLAM cabinet, this is across the landscaped ground and a tarmacadam surfaced roadway.

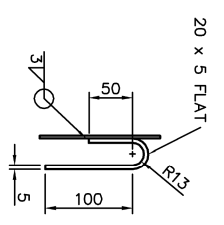
Additional question raised in email from Andrew King, 10th July: *‘Detail, if any, of how the structure would be made safe from the potential for the public to scale it’*. BT’s standard practice is to fit anti climb devices to all towers, which take the form of plates secured by padlocks preventing access to the climbing ladder. A drawing of a typical example is attached:



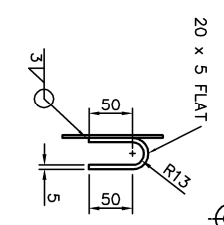
ITEM 1 WELDED ASSEMBLY



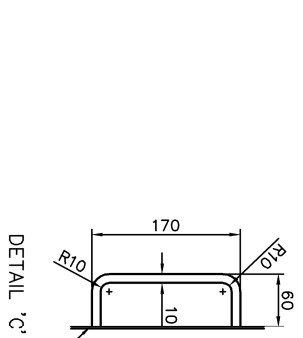
ITEM 2 WELDED ASSEMBLY



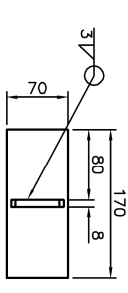
DETAIL 'A'



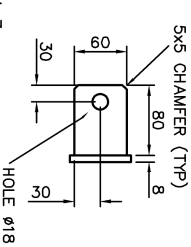
DETAIL 'B'



DETAIL 'C'



ITEM 3 WELDED ASSEMBLY



NOTES

1. ALL ITEMS BUNDLING AND DELIVERY MUST CONFORM TO SPECIFICATION RC 8832
2. TOTAL WEIGHT = 35.6kg.

ITEM	DESCRIPTION	SCHEDULE	WT/ITEM (kg)	QTY	WL DRG 1
1	WELDED ASSEMBLY		17.3	1	THIS SHEET
2	WELDED ASSEMBLY		17.3	1	THIS SHEET
3	LOOK ASSEMBLY		1	1	THIS SHEET

DIMENSIONS IN mm UNLESS OTHERWISE STATED

© British Telecommunications plc 2013

DO NOT SCALE

ORIGINAL SCALE 1:3 & 1:5

DRN NO	A1
CHKD BY	GP
DESIGNER	GP
CERTIFICATION	
CLIENT	A2
DATE	15/02/13

ANY MODIFICATION TO THE DRAWING OR THE USE OF ALTERNATIVE ITEMS MUST BE AGREED WITH THE DESIGNER.

MATERIAL	SEE BT SPEC RC8832
FINISH	SEE BT SPEC RC8832

AMENDMENT

ISSUE	A
-------	---

BT TECHNOLOGY, SERVICE & OPERATIONS

STANDARD ANTI-CRIMP DEVICE FOR 20 DIA RUNGS AT 250 PITCH 420 WIDE (I/S)

WL	4004366
SHT	01