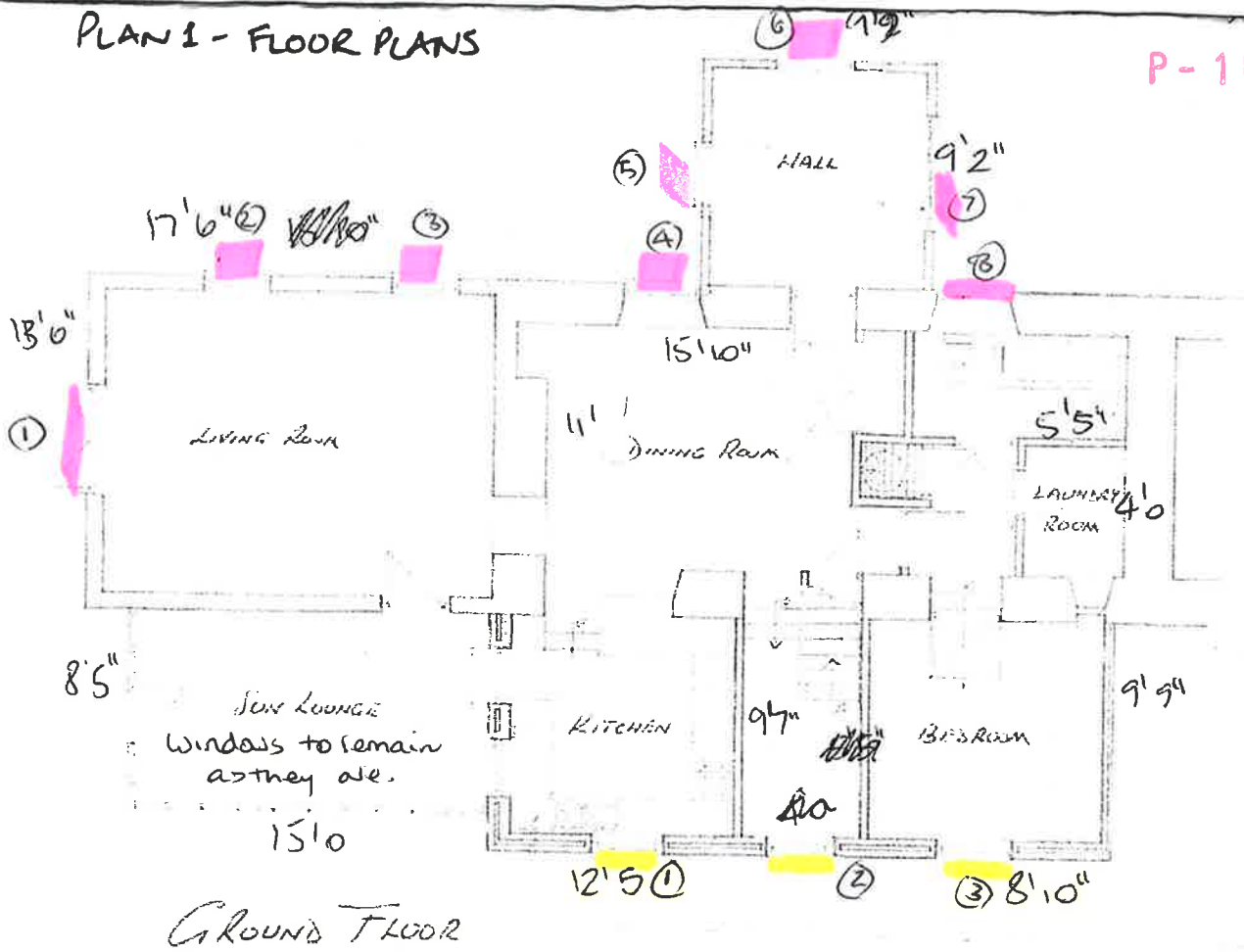
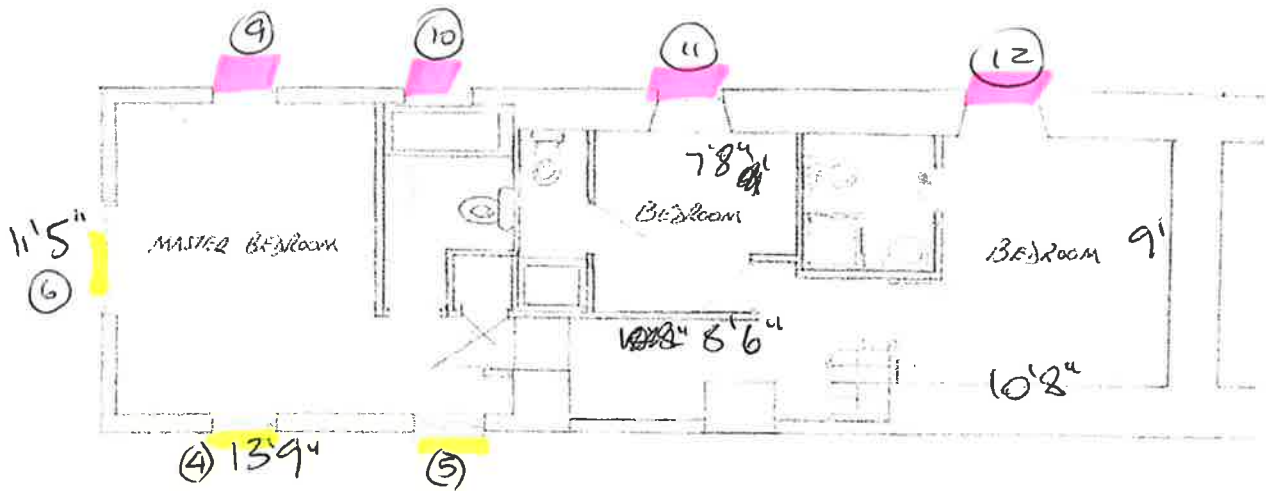


PLAN 1 - FLOOR PLANS

P-16-044



GROUND FLOOR

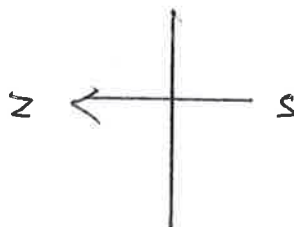


FIRST FLOOR

PLANS FOR IDENTIFICATION ONLY

Approved
03 NOV 2016
Plans

RECEIVED BY THE
PLANNING DEPARTMENT
27 APR 2016



- We would hope to replace these windows with UPVC
- If allowed these windows as well.

⑥, ④ & ③

① (PATIO DOOR)

PLAN 2 : EXISTING ELEVATIONS

P-16-044
①, ④, ⑤, ⑥

Approved
03 NOV 2016
Plans



RECEIVED BY THE
PLANNING DEPARTMENT
27 APR 2016

: ①, ②, ③, ④, ⑤

BY THE
APARTMENT

33

P-16-044



PLAN 3: EXISTING ELEVATIONS

P-16-044

12, 11, 10, 9, 8, 5, 4, 3, 2
778 are obscured to 1gr 9, porch

Approved
03 NOV 2016
Plans



RECEIVED BY THE
PLANNING DEPARTMENT
27 APR 2016

PLAN 4: EXISTING ELEVATIONS



RECEIVED BY THE
PLANNING DEPARTMENT
27 APR 2016

Approved
03 NOV 2016
Plans

2) Kitchen window - faces WSW.

*70-01-21

PLAN 5: EXISTING ELEVATIONS

P-18-044

Approved

03 NOV 2016

Plans

RECEIVED BY THE
PLANNING DEPARTMENT

27 APR 2016



PLAN 6: LOCATION PLAN



SITE LOCATION PLAN
AREA 5 HA
SCALE 1:1250 on A4
CENTRE COORDINATES: 87437, 14738

P-16-044



© Crown Copyright 2016. Licence number 100047474



Supplied by Streetwise Maps Ltd
www.streetwise.net
Licence No: 100047474
22/04/2016 11:09:27





Run-through
sash horns



RECEIVED BY THE
PLANNING DEPARTMENT
27 SEP 2016

As any conservation of care will tell you, run-through sash horns are the quintessential signature of any timber sash window. But, replicating the feature in PVC-u means that many PVC-u sash windows use bolt on sash horns to replicate the look – until now.

Both Heritage Rose and Charisma Rose now come with an authentic run-through sash horn option, extending the period charm of these premium sash windows even further. Popular with conservation of care and discerning homeowners alike, run-through sash horns are the perfect finishing touch to your window.



Heritage Rose
Run-through sash horn

