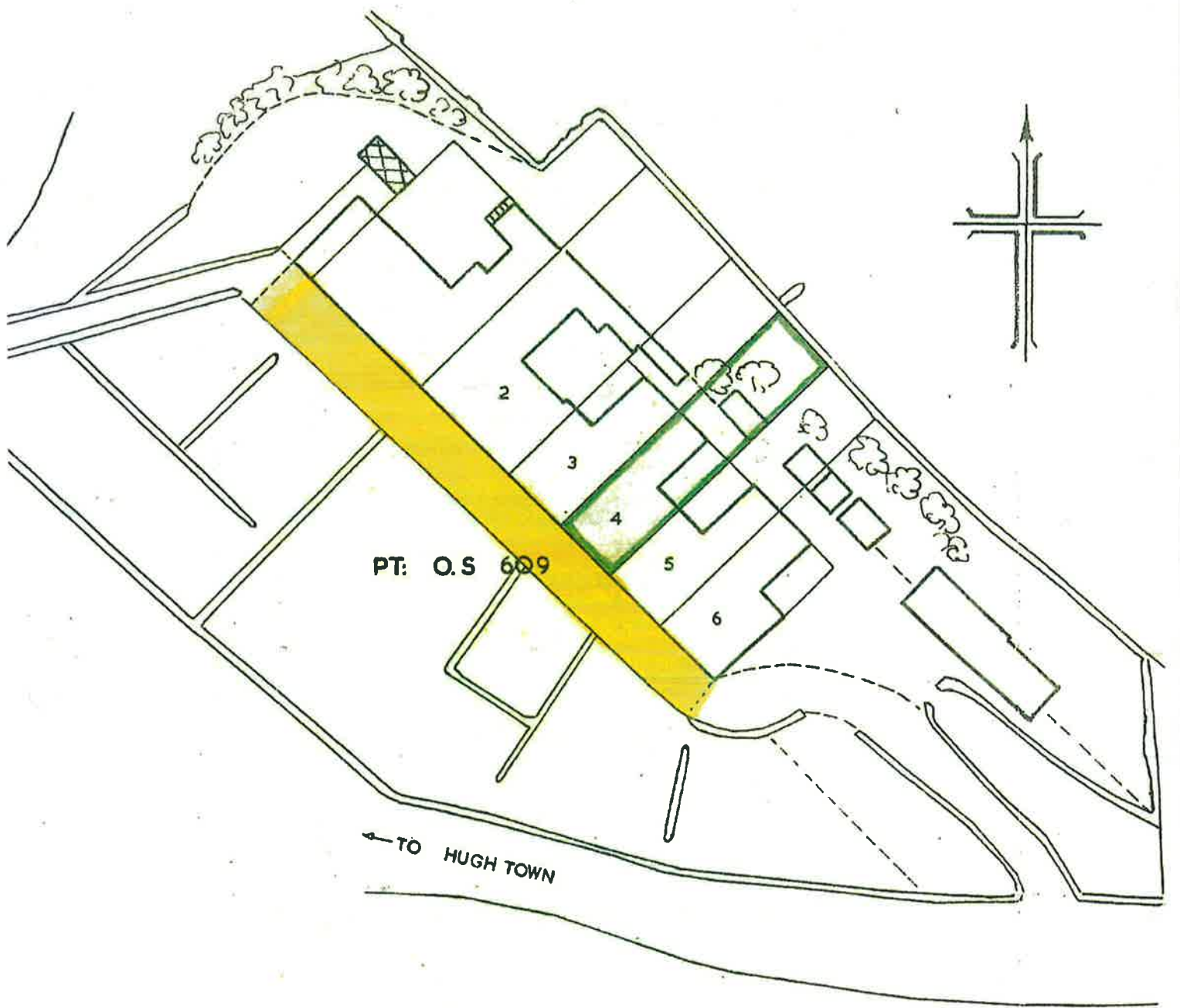
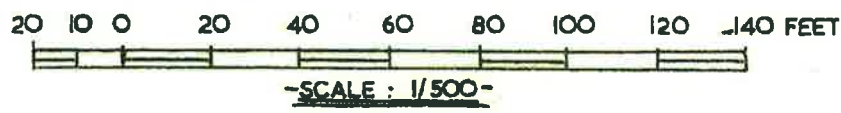


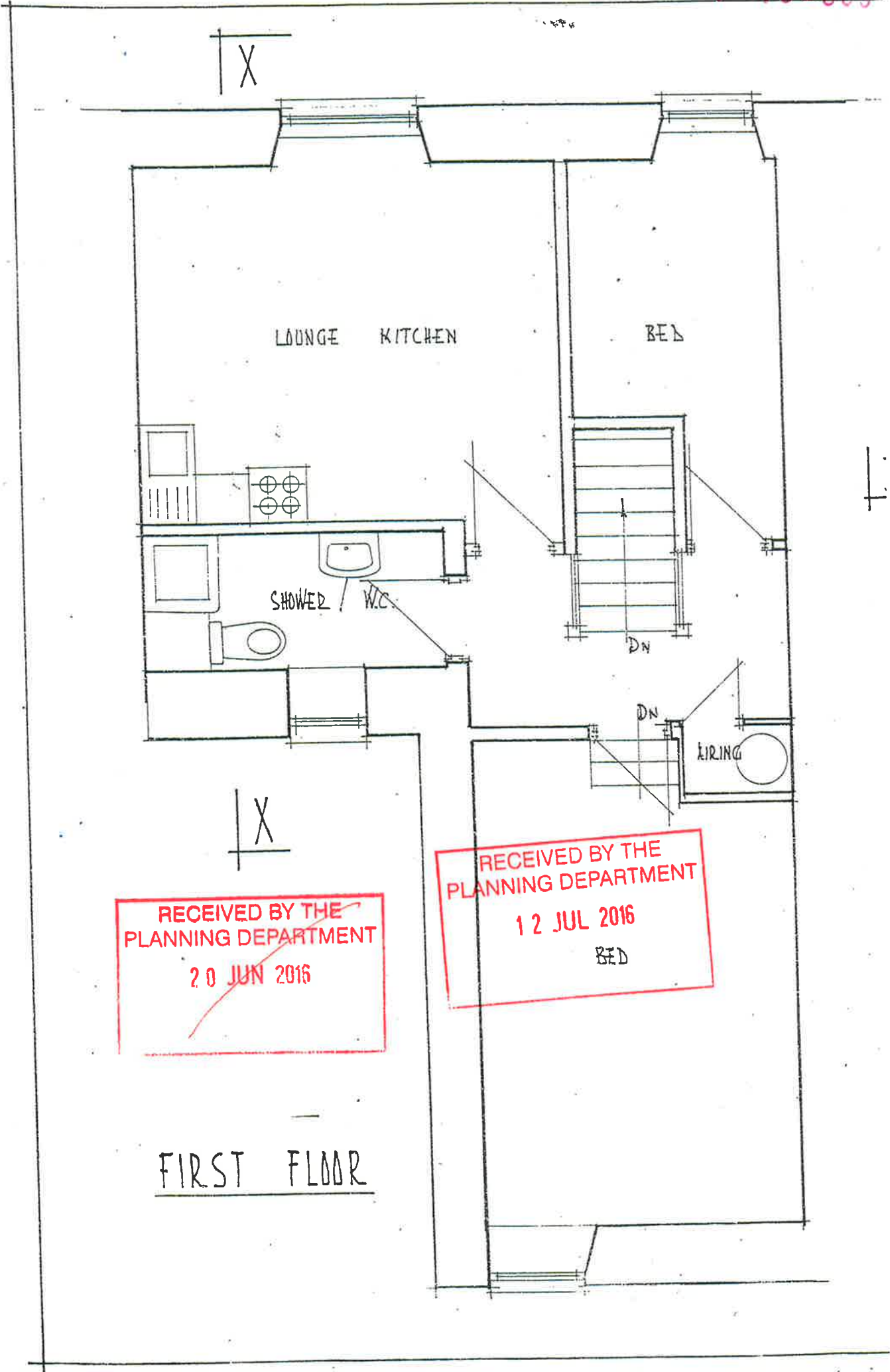
RECEIVED BY THE PLANNING DEPARTMENT
12 JUL 2016

RECEIVED BY THE PLANNING DEPARTMENT
20 JUN 2016



PT: O.S 609





LOUNGE KITCHEN

BED

SHOWER / W.C.

DN

DN

FIRING

RECEIVED BY THE
PLANNING DEPARTMENT
20 JUN 2016

RECEIVED BY THE
PLANNING DEPARTMENT
12 JUL 2016
BED

FIRST FLOOR

P-16-069

4, BAY VIEW
TERRACE,
PORTH MELLON,
ST. MARYS.

PROPOSED ACCESS
STAIR TO ROOFSPACE

MRS. D. READ

RECEIVED BY THE
PLANNING DEPARTMENT
20 JUN 2016

DATE - NOVEMBER 1994

SCALE - 1/4" = 1'0"

DRAWN - T.J.H.

T.J. HIRON ARCHS.

'CLOWDISLEY'

ST. MARYS

ISLES of SCILLY

TEL. 422563

DRG. NO.

DR-BY-1

RECEIVED BY THE
PLANNING DEPARTMENT
12 JUL 2016

B

A

LOUNGE DINER

KITCHEN

SHOWER W.C.

Dn

Up

Dn

AIR II

New
Door

BED

RECEIVED BY THE
PLANNING DEPARTMENT
20 JUN 2016

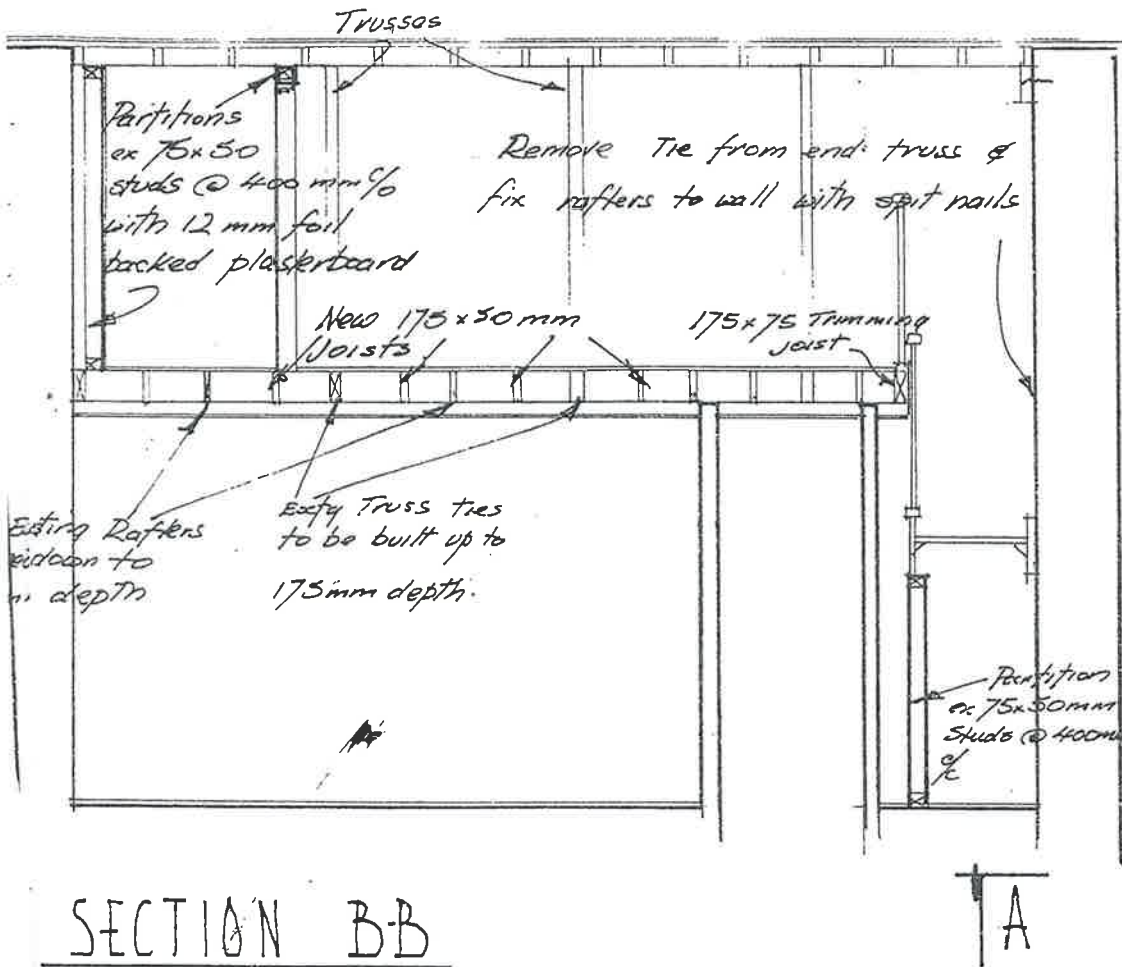
FIRST FLOOR

P-16-069

A BAY VIEW
TERRACE
PORTH MELLON
ST. MARY'S

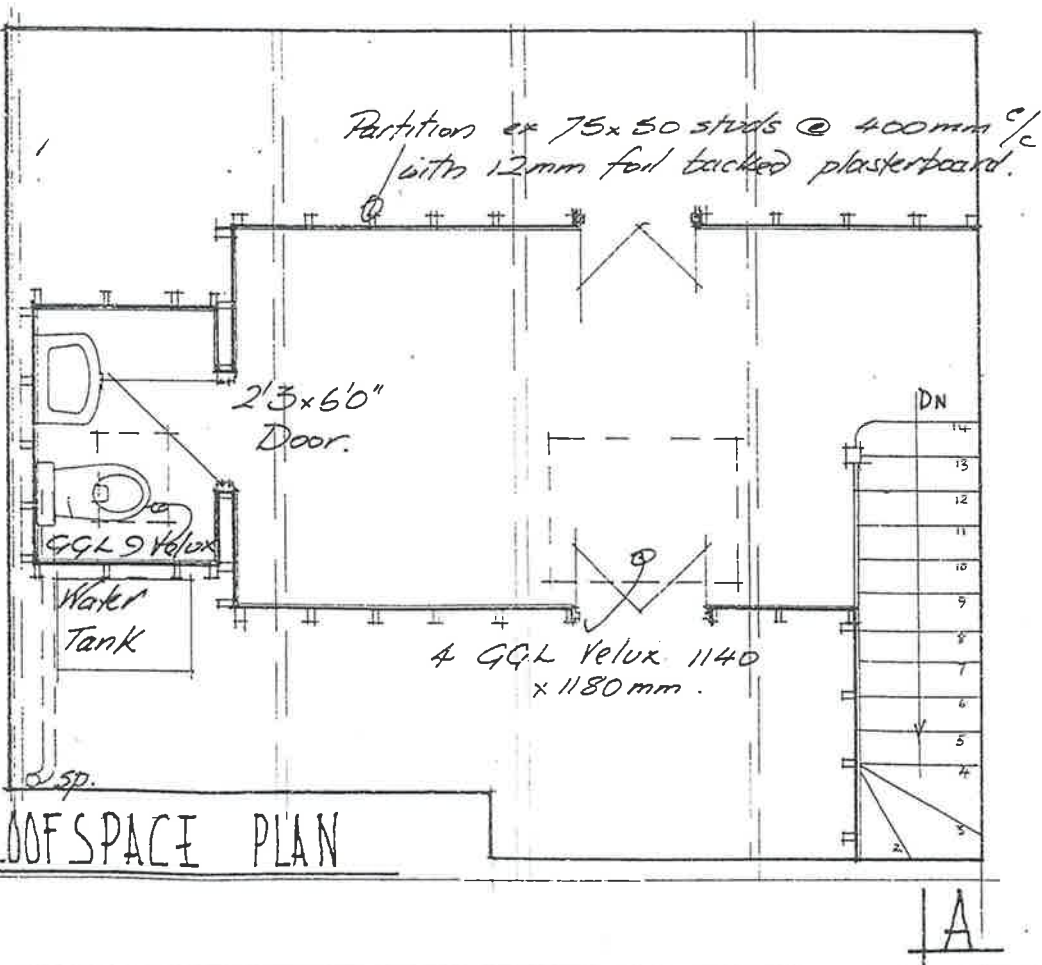
PROPOSED LOFT
CONVERSION

MRS. D REAB



SECTION B-B

A



LOFT SPACE PLAN

A

RECEIVED BY THE
PLANNING DEPARTMENT

20 JUN 2016

RECEIVED BY THE
PLANNING DEPARTMENT

12 JUL 2016

B1

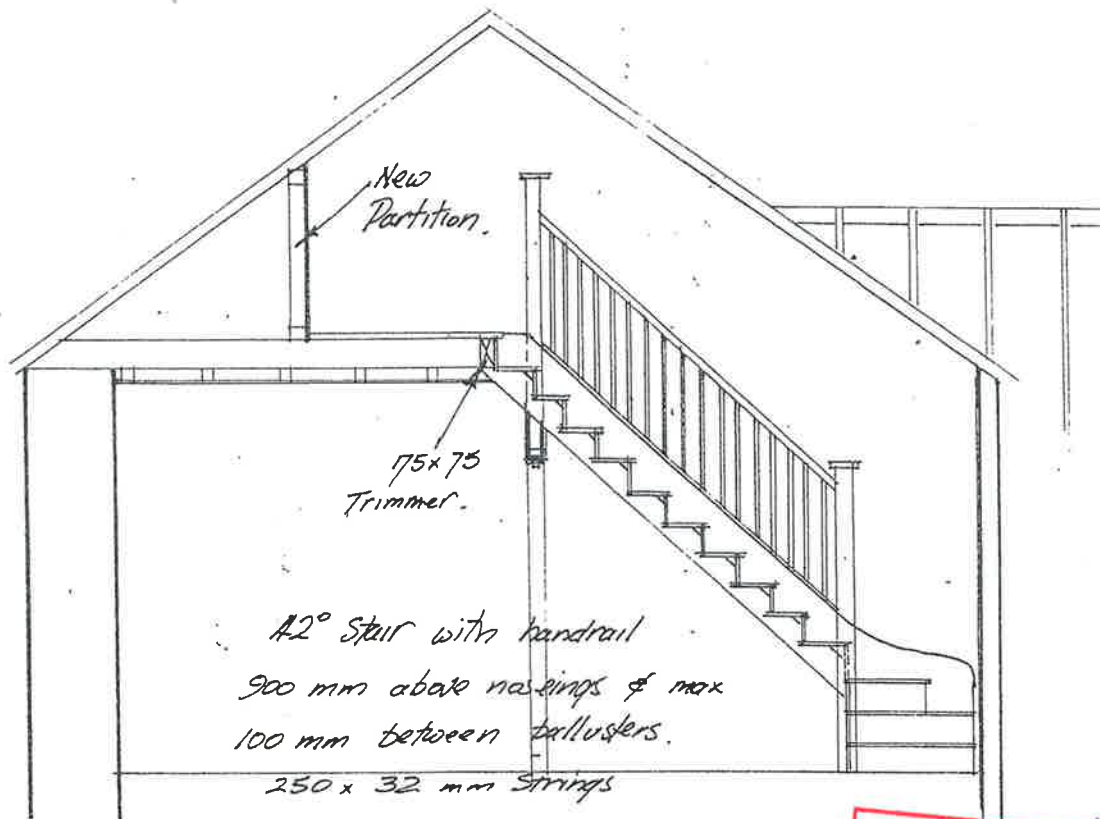
DATE - NOV. 1994

SCALE - 1/4" = 1'0"

T.J. HIRON ARCS.
'LOWDISLEY'
ST MARY'S
ISLES of SCILLY
TEL 422563

DWG. NO.

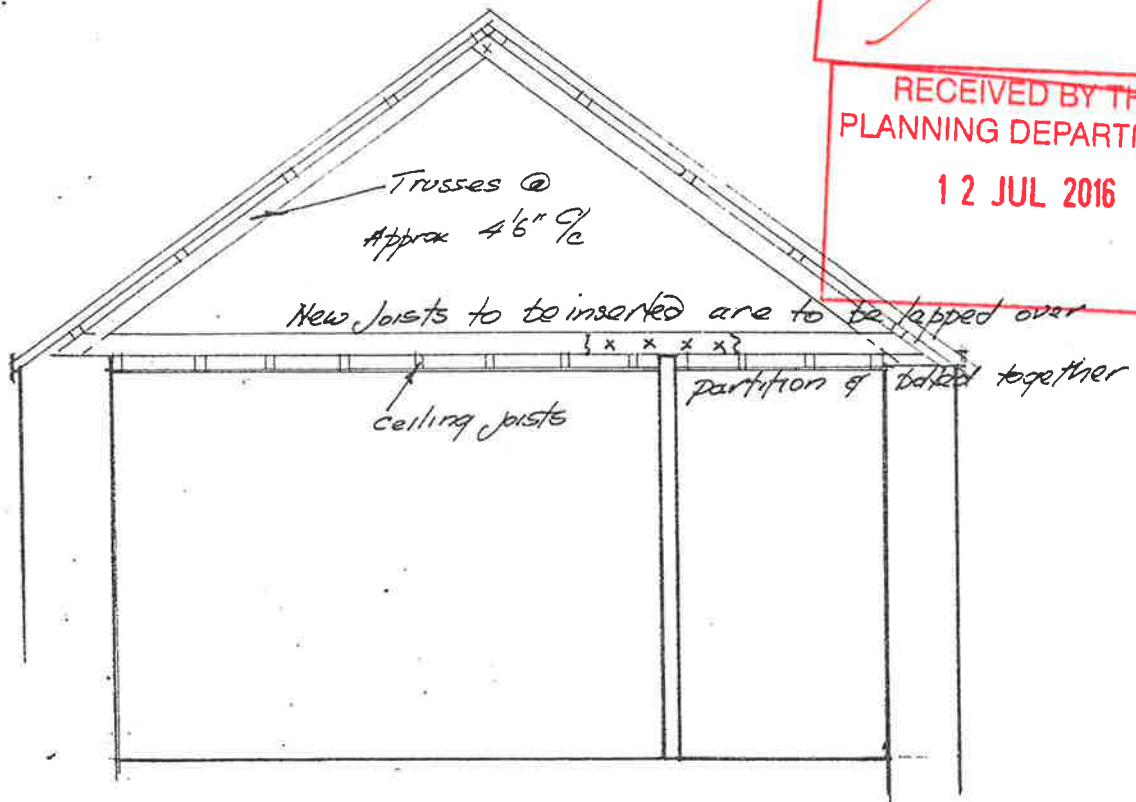
DR-BV-2



SECTION A-A

RECEIVED BY THE
PLANNING DEPARTMENT
20 JUN 2016

RECEIVED BY THE
PLANNING DEPARTMENT
12 JUL 2016



EXISTING SECTION X-X

sh
12

| B