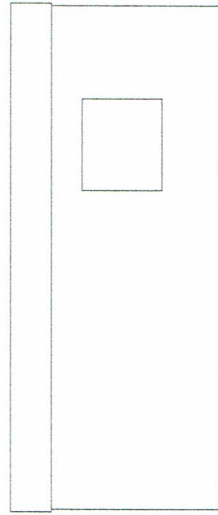
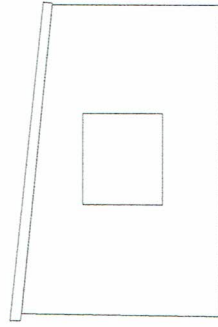


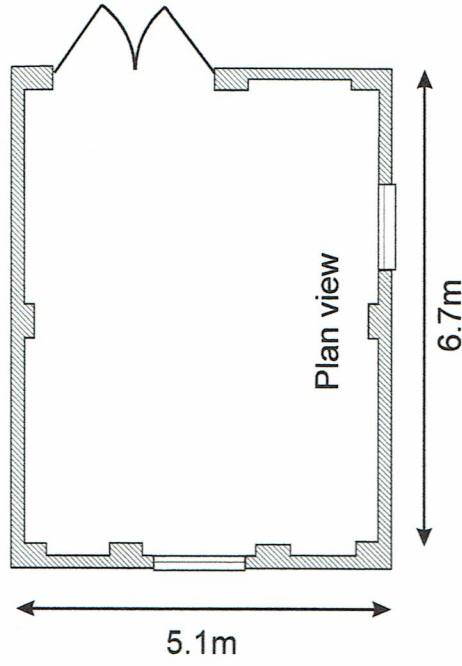
East Elevation



South elevation



West elevation



Plan view

Proposed Garage Drawing

Luitreth
McFarlands Down
St. Mary's
Isles of Scilly

Scale: 1:100
20th March 2017(Rev. 1)

Notes

1. Single wall concrete block construction with pillars and rendered externally.
2. 6 inch profile cement fibre roof.
3. Timber garage doors 2000m high x 2400m wide, side fixing.
2. 2 casement type windows 1050mm high x 1200mm wide.