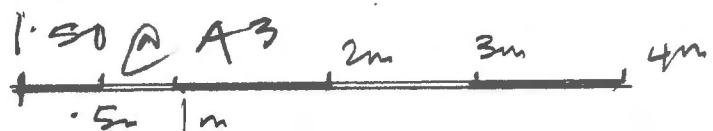
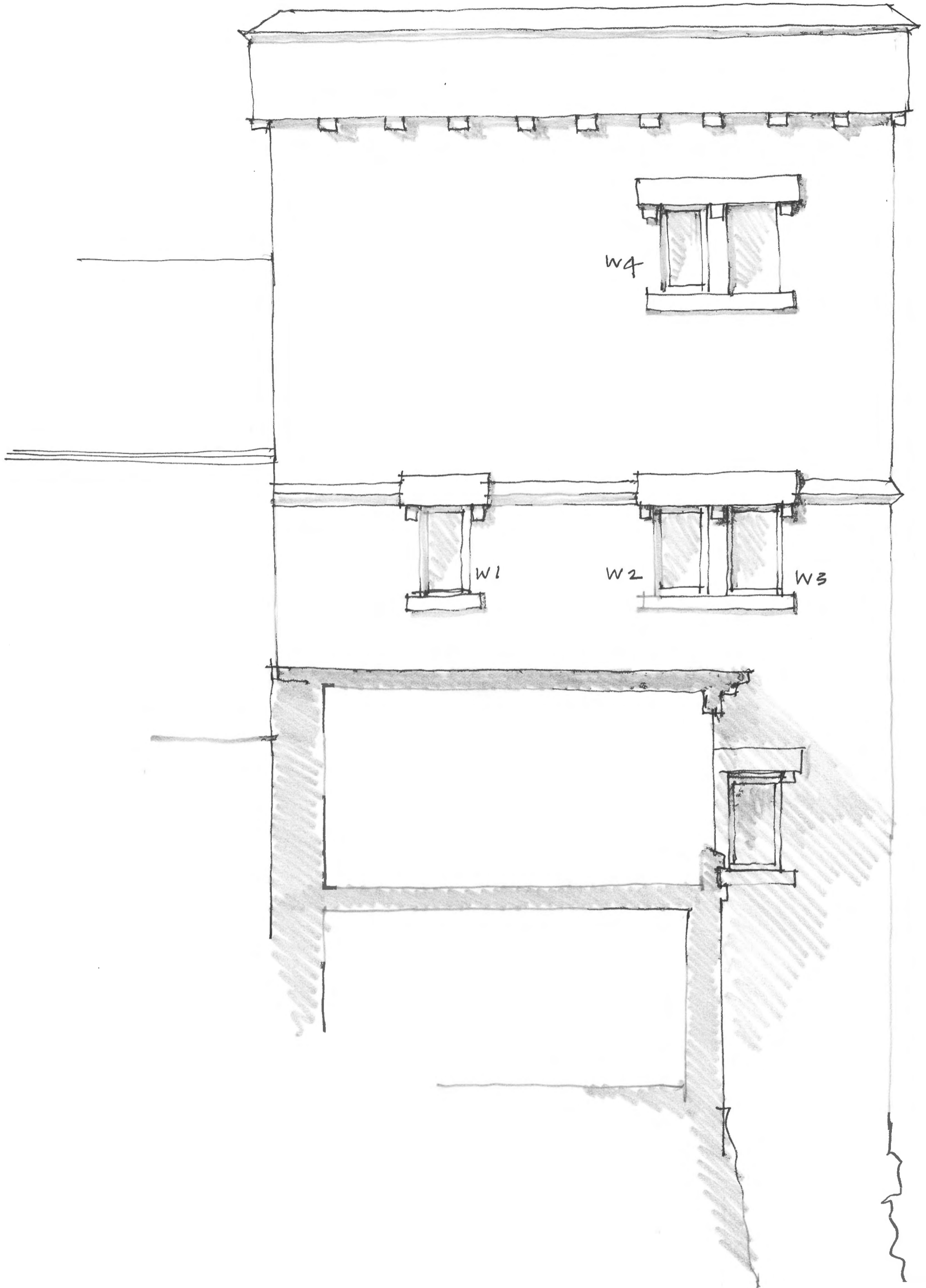


TOWER AT TRESKO ABBEY
EAST ELEVATION



3975/10

APPROVED
By Craig Dryden at 9:10 am, Dec 15, 2017



TOWER AT TRESLO ABBEY
SOUTH ELEVATION 1:50 @ A3

0 1 2 3 4m

APPROVED

By Craig Dryden at 9:10 am, Dec 15, 2017

3975/11

llewellyn
harker
lowe

ARCHITECTS

01749 860022
architects@llewellynharker.com
www.llewellynharker.com

granite head
existing

pointed treated softwood
head ex 100 x 63

stile

ex 63 x 50
sash

ex 63 x 50

hardwood cil
ex 100 x 63

APPROVED

By Craig Dryden at 9:10 am, Dec 15, 2017

Ilewellyn
harker
lowe

ARCHITECTS

01749 860022
architects@ilewellynharker.com
www.ilewellynharker.com

W1-8
TOWER AT TRESCO ABBEY
NEW TIMBER WINDOWS

granite cil
3975/12
FULL SIZE @ A3