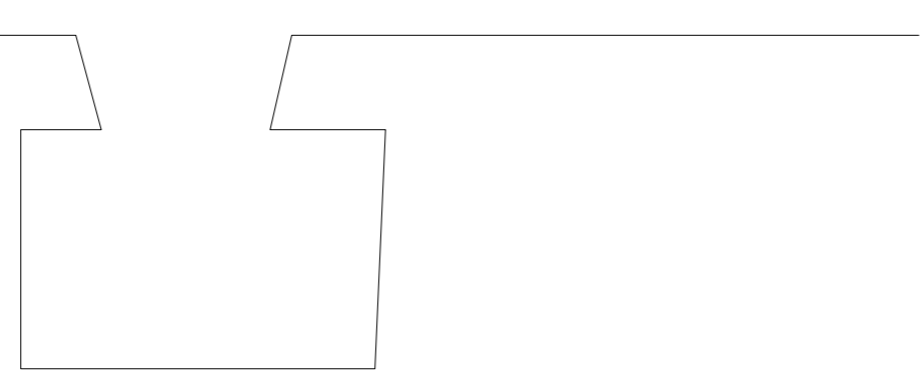
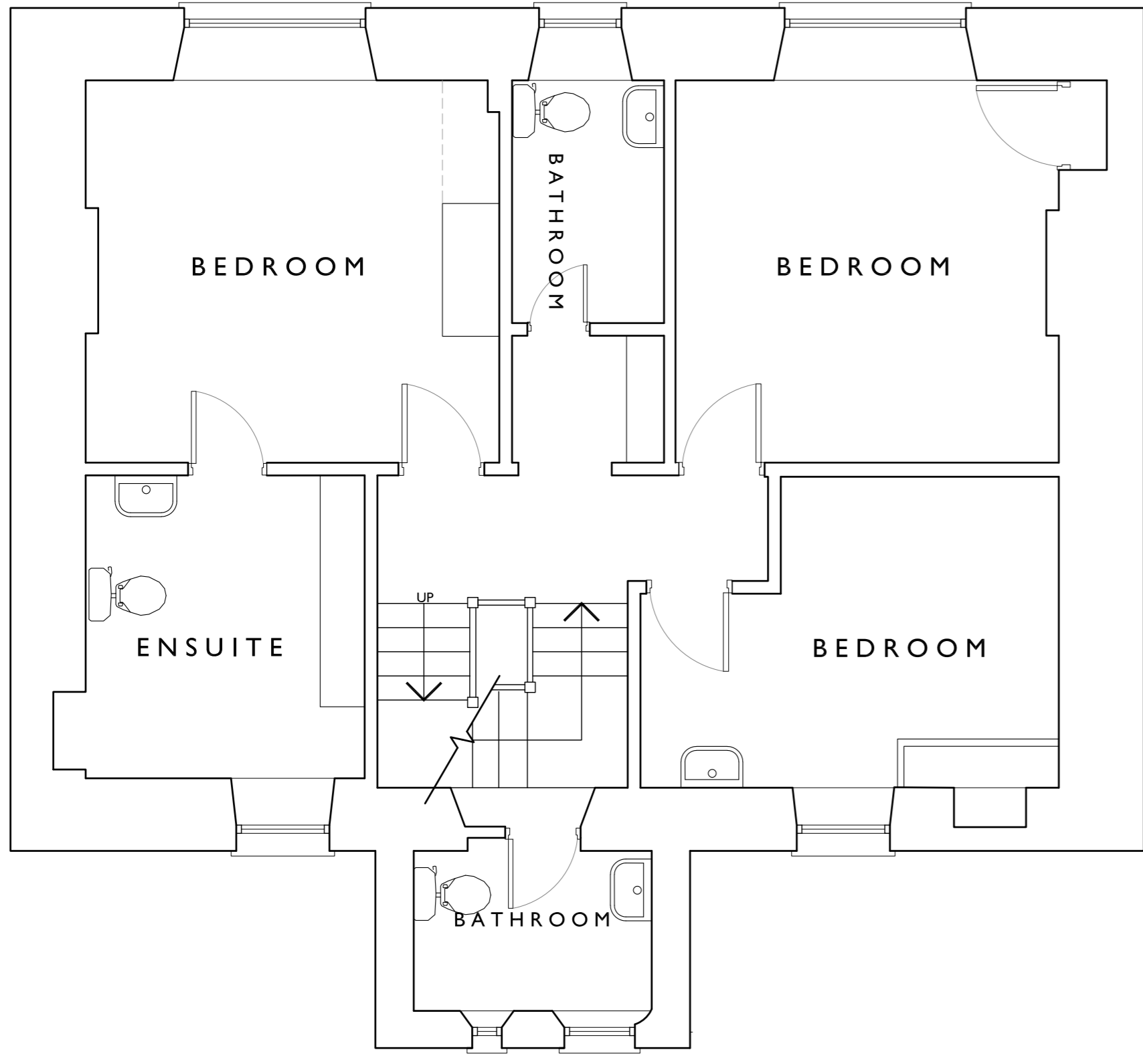


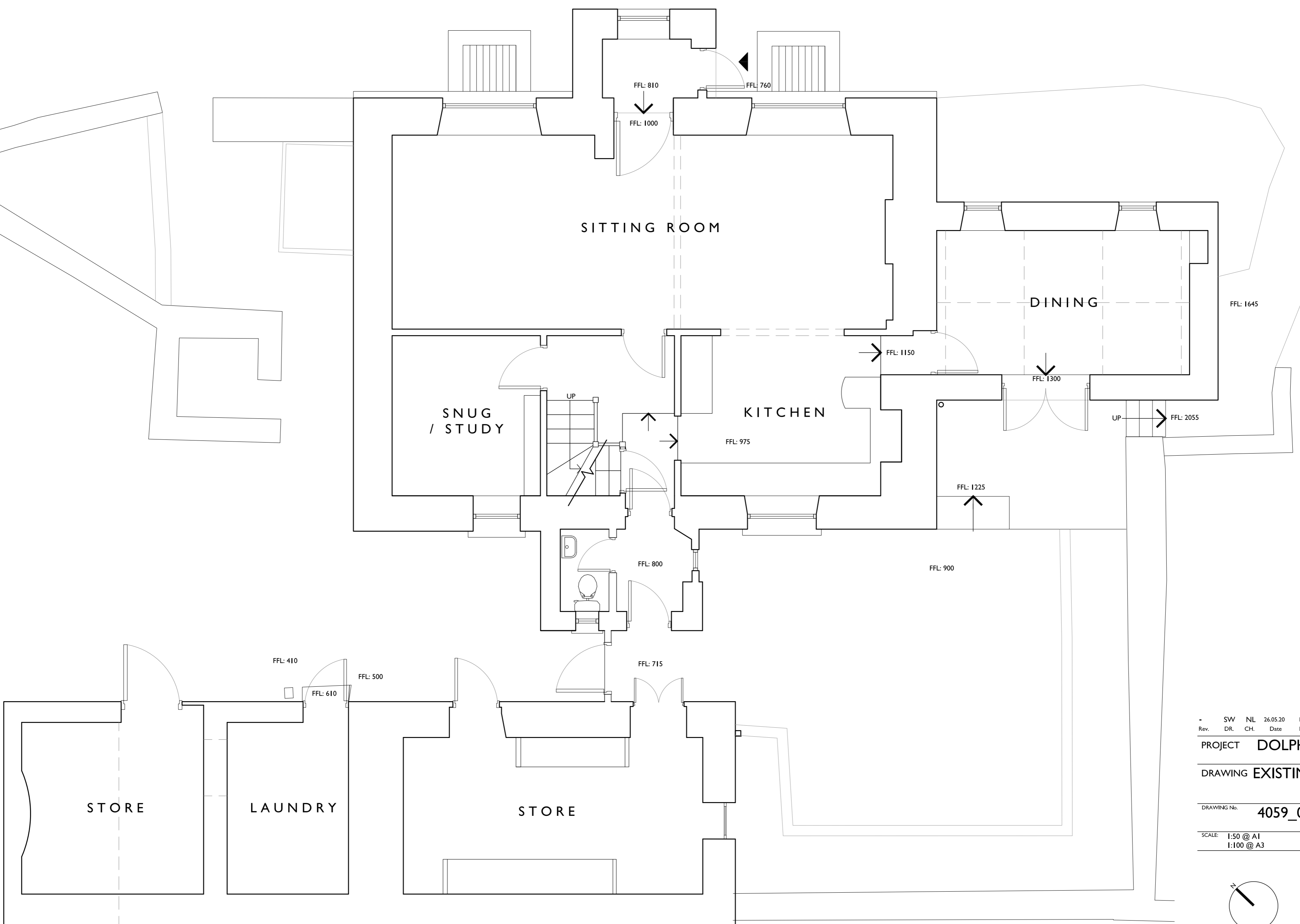
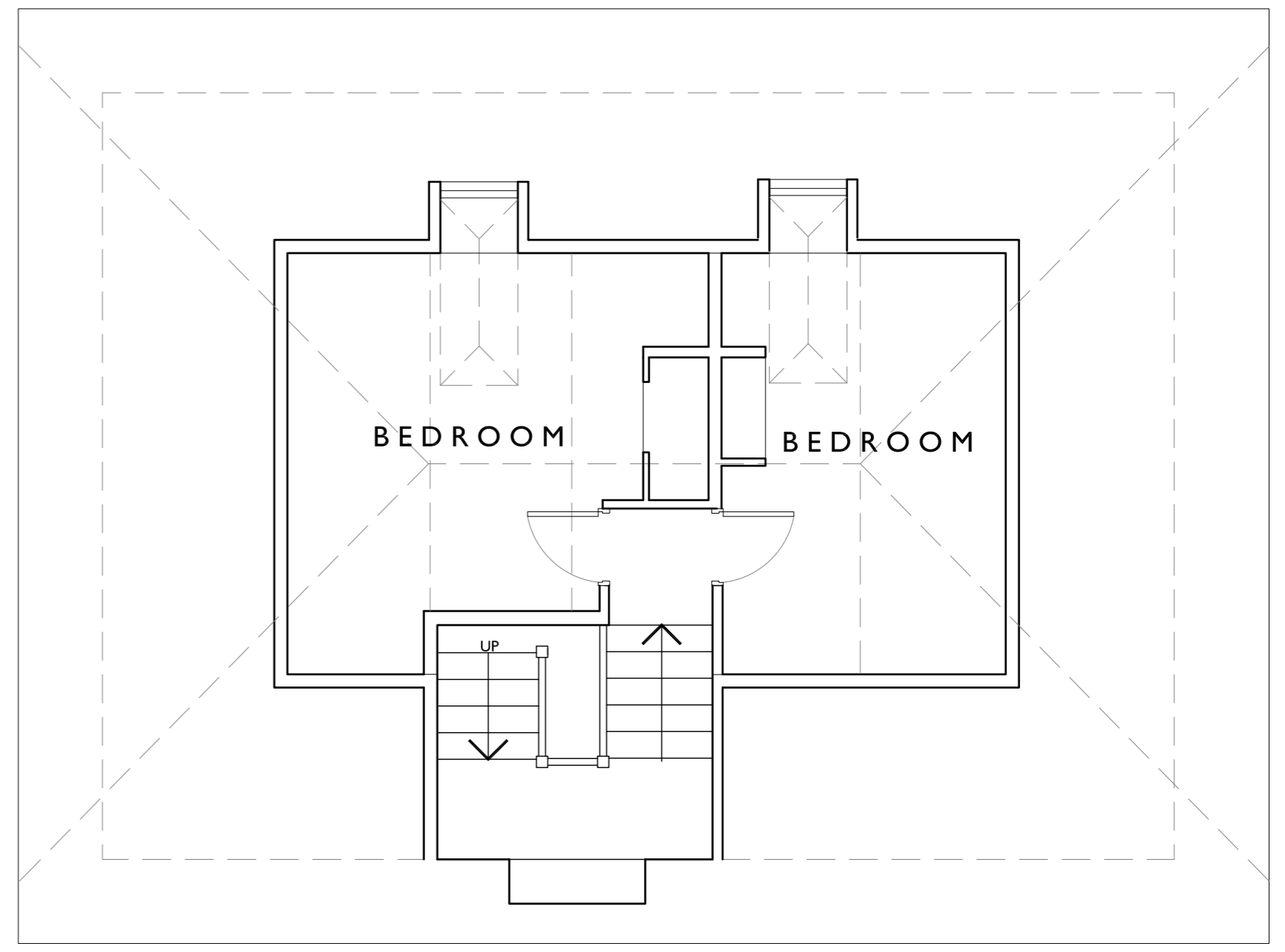
RECEIVED
By A King at 11:03 am, Aug 20, 2020



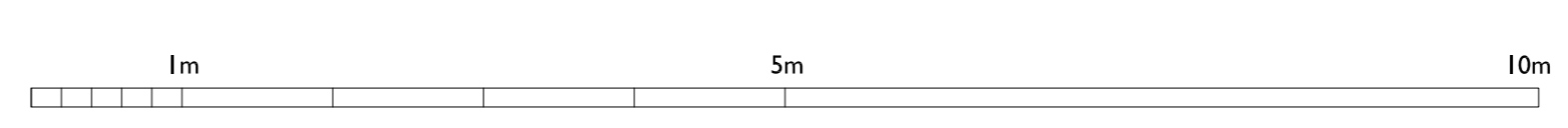
FIRST FLOOR



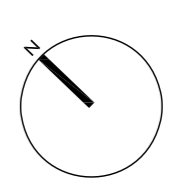
SECOND FLOOR



GROUND FLOOR



Rev.	SW	NL	26.05.20	First Issue
	DR	CH	Date	Notes
PROJECT DOLPHIN HOUSE				
DRAWING EXISTING PLANS				
DRAWING No. 4059_006_A				
SCALE 1:50 @ A1				DATE MAY 2020
1:100 @ A3				



llewellyn harker lowe

harker lowe, east pennine, shepshed mill, BA4 6TT
www.llewellynharker.com © llewellyn harker architects 2019
Do not scale from this drawing use figured dimensions only.