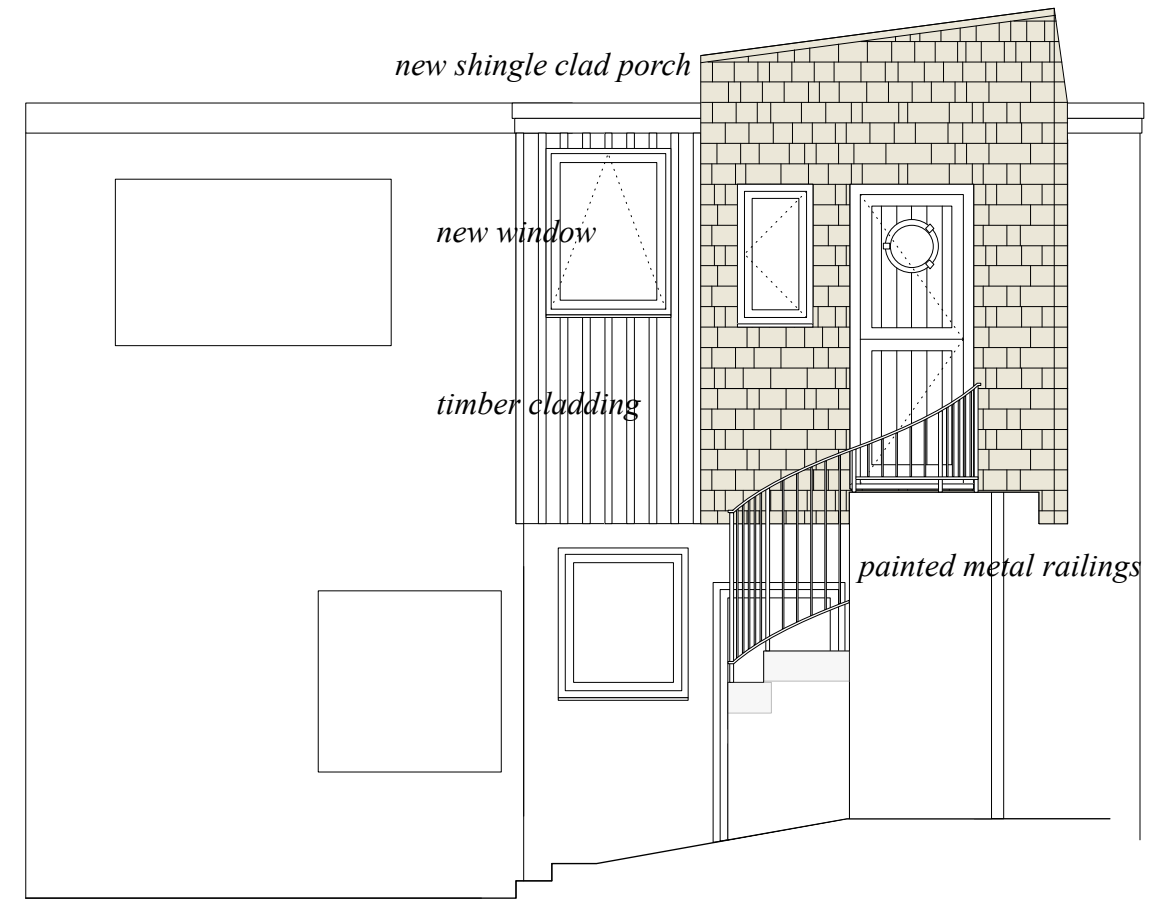


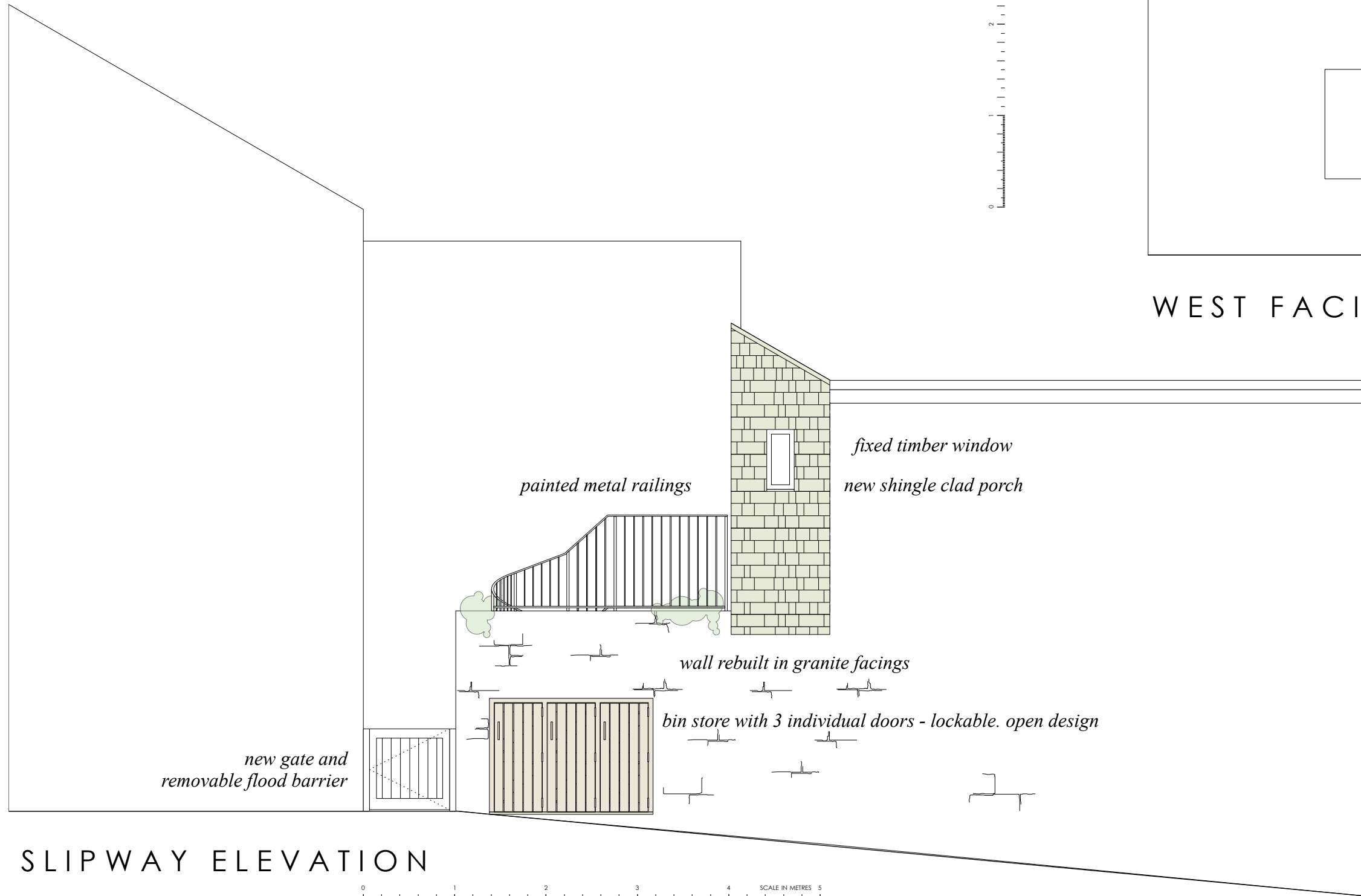
**RECEIVED**  
By Emma Kingwell at 8:33 am, Oct 14, 2020

5 SCALE IN METRES 4 3 2 1 0

SCALE IN METRES 5 4 3 2 1 0



WEST FACING ELEVATION



SLIPWAY ELEVATION

SCALE IN METRES 5 4 3 2 1 0

**TIDEWAY**  
THE BANK, HUGH TOWN

**PROPOSED ELEVATIONS**

DRAWING NO. TW05  
DATE - OCT 2020  
SCALE - 1:50 @ A3