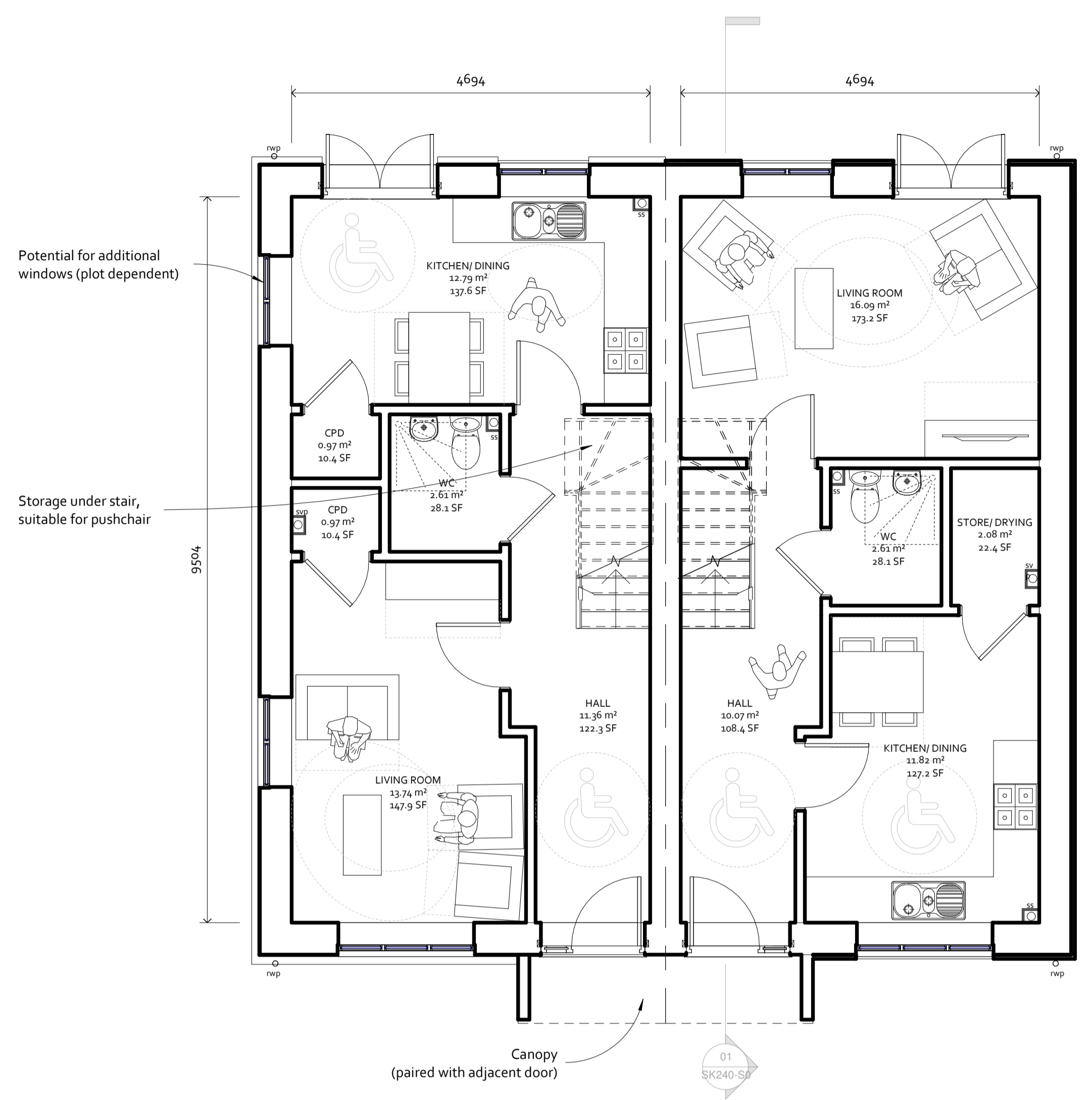


Contractors to check all dimensions on drawings.
 Any discrepancies must be reported to KTA or the contract administrator before proceeding.
 Do not scale from planning drawings, work to figured dimensions.
 This drawing must be read in conjunction with all relevant consultants drawings.
 This drawing is © KTA.

Revision Schedule			
Revision Number	Revision Date	Revision Description	Issued/Authorised by
P2	JAN 2021	PLANNING ISSUE	MC/AC
P1	FEB 2020	DRAFT ISSUE	MC/AC

Plan Variation 01

Plan Variation 02

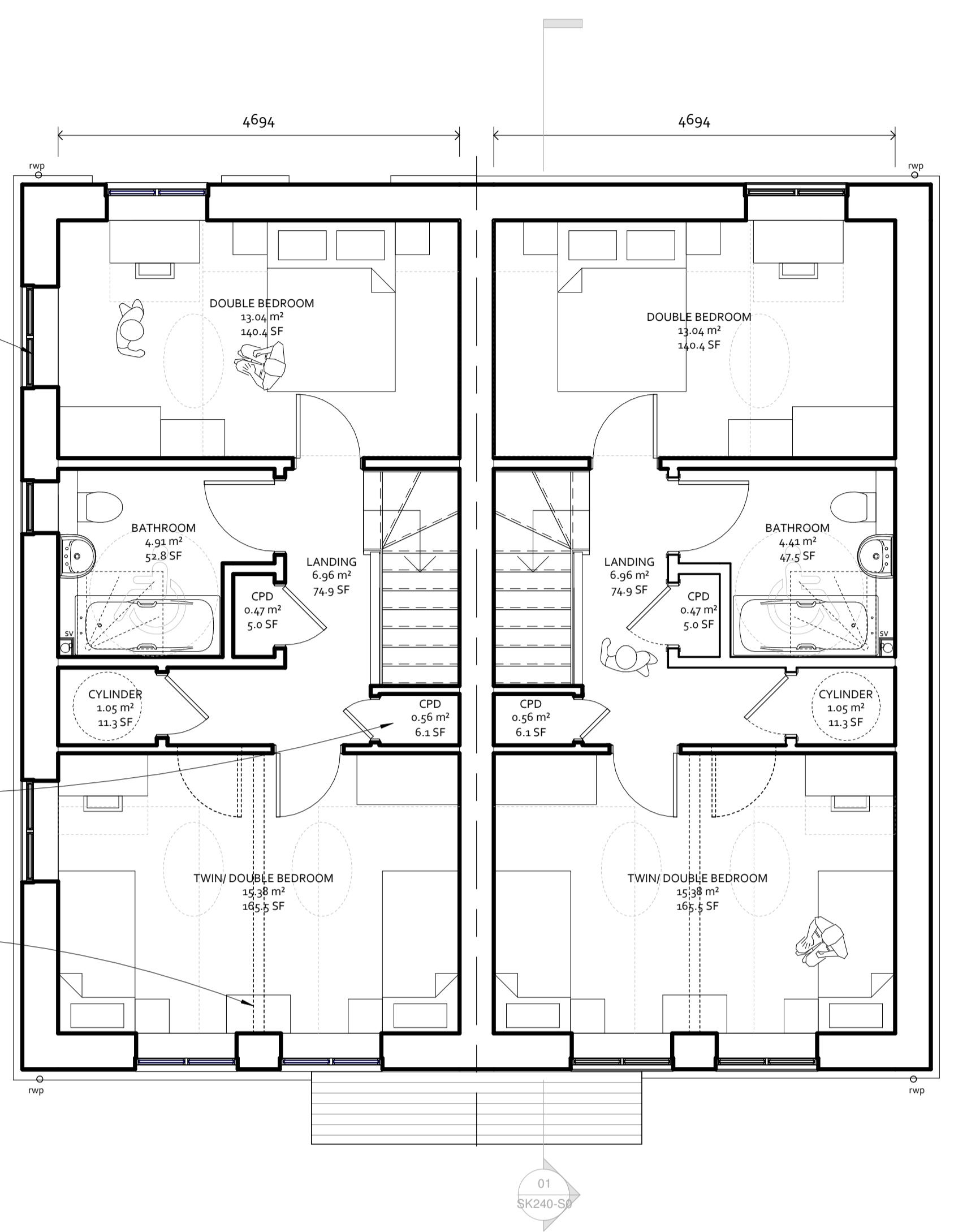


Ground Floor Plan
1 : 50

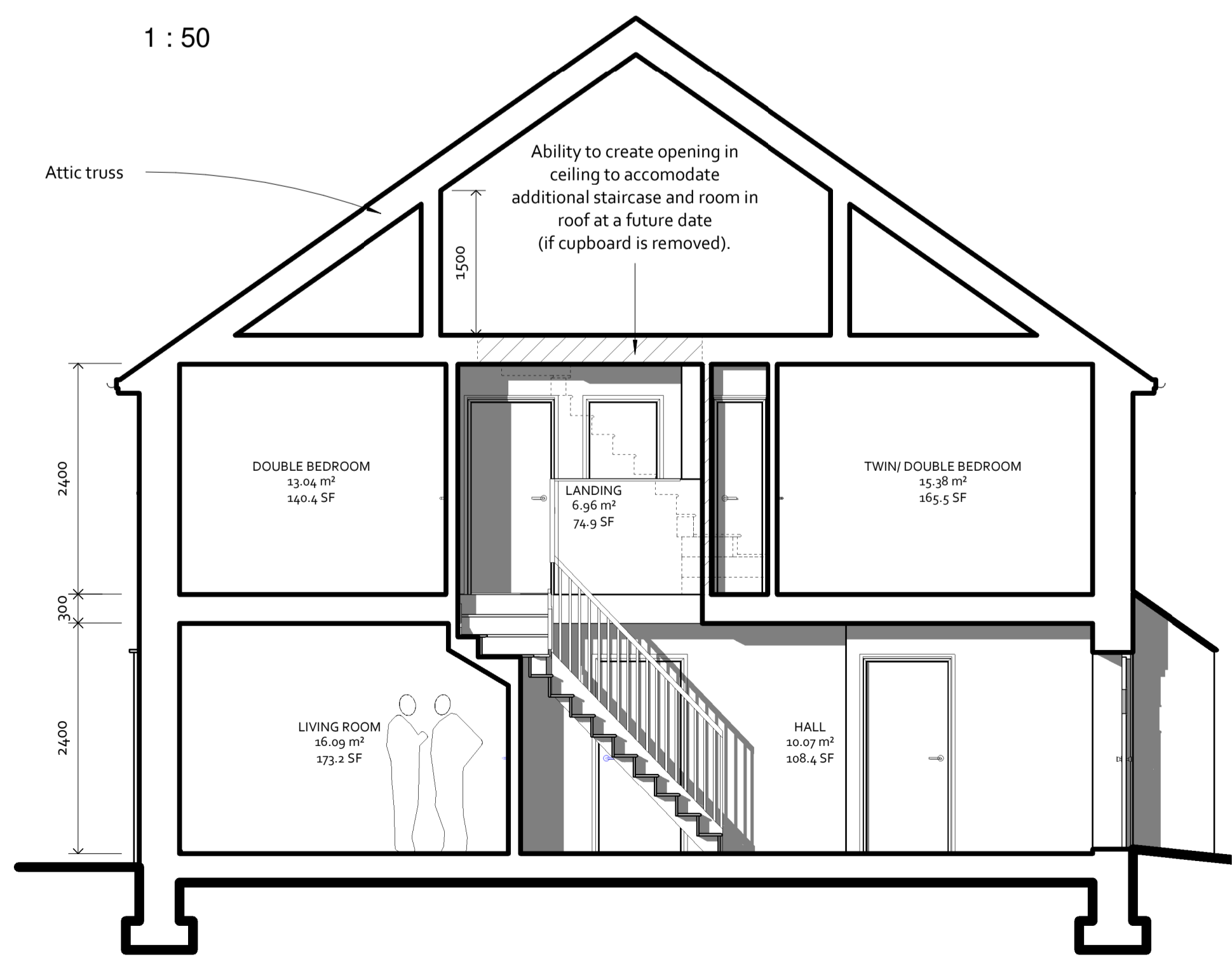
Potential for additional windows (plot dependent)

Ability to add additional stair and room in the roof if cupboard is removed

Ability to split twin/double bedroom into two single bedrooms



First Floor Plan
1 : 50



Section AA
1 : 50



HOUSETYPE C
2 Bed 4 Person
Semi Detached

Part M(4) Category 2

2B/ 4P Housetype C - Front Entrance
GIA 89.2m²
Minimum GIA = 79m²
(Technical housing standards - nationally described space standard)

PLANNING ISSUE



Kensington Court, Woodwater Park, Pynes Hill,
Exeter, EX2 5TY
Tel: 01392 360338
Email: kit@kta.uk.com
Web: www.kta.uk.com

Project
Ennor Housing, Isles of Scilly

Title
Illustrative Housetype C - Typical Plans as proposed
Author MC Checked by AC

Date 07/01/2021 14:28:18 Scale 1 : 50 @ A1

Project 2002 Status Pre Construction

Drawing number
SC-KT-XX-XX-DR-A-2002-SK240-S0 -P2