

E Trial Pit Logs

TRIAL PIT – SUMMARY RESULTS South Beach Tresco

Date of excavation – 06/06/17 Weather – Sunny.

Location – All pits were located 30m apart, Pit 1 was slightly to the south of the point marked on the location map provided to prevent disruption to the toe of the dune. Pits 2 and 3 were located several metres (c.4-6m) south of their proposed sites to address the impact of the slope of the ground at the base of the dune.

PORTH MELLON

Trial Pit Number	Depth from beach level to bottom of excavation	Ordnance Datum Newlyn Level of beach prior to trial pit being undertaken (See Site Plan for level info.)
1	3.7m	c.4m
2	3.5m	c.3.5m
3	2.6m	c.3.3m

Pit 1 Results

0.0 (ground level) – -370 cm Unconsolidated loose sand



Fig 1 – Pit 1 South Beach



Fig 2 –Pit 1 South Beach (note; steel cable uncovered during excavation – not labelled and not marked on any maps – does not coincide with cable to BT communications supply which is some 15-20m to east of this point)

Pit 2 Results

0 (ground level) - -2.0m Fine to Medium grained loose sand

-2.0m - -3.5m Med-Coarse grained loose sand

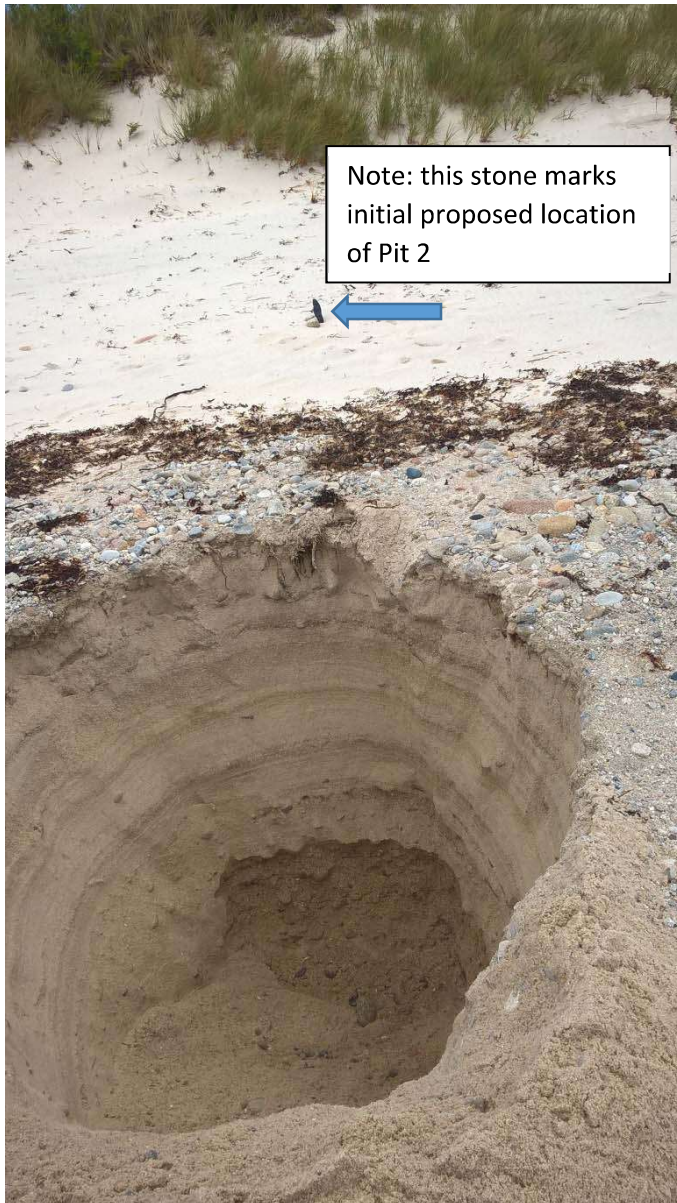


Fig 3 _ Pit 2 South Beach



Fig 4 – Pit 2 South Beach.

Pit 3 Results

0 (ground level) - -1.6m Loose Sand

-1.6m - -2.6m Dk Grey firm to stiff Claystone



Fig 5 – Pit 3 South Beach



Fig 6 – Pit 3, South Beach – note water seepage at boundary between sand and claystone



Fig 7 – Pit 3 South Beach – fragments of claystone taken from spoil heap.

TRIAL PIT – SUMMARY RESULTS Porth Mellon

Date of excavation – 16/5/17 Weather – Overcast.

PORTH MELLON

Trial Pit Number	Depth from beach level to bottom of excavation	Ordnance Datum Newlyn Level of beach prior to trial pit being undertaken (See Site Plan for level info.)
1	2.1m	c.3.77m
2	2.6m	c.3.98m

Pit 1 Results

0.7 – 2.1m (ground level) Loose sand with boulders

0.5 – 0.7m Loose to compact medium to coarse grained sand and gravel

0 (base of pit) – 0.5 Ram - sand, gravel and clay composite deposit (firm/stiff to dense/compact)



Figs 1 and 2 – Trial Pit 1 Porth Mellon



Fig 3 – Trial Pit 1 – Sand / Gravel / Clay composite

Pit 2 Results

Digging of pit ceased for Health and Safety reasons (combination of site location / stability of hole / practicalities)

0.4 – 2.6m (ground level) Loose Sand (fine grained)

0 (base of pit) – 0.4m medium grained orange sand (loose)



Fig 4 and 5 Pit 2 Porth Mellon



Fig 6 – Pit 2 Porth Mellon



Fig 7 – Medium grained sand at base of pit

TRIAL PIT – SUMMARY RESULTS Porthloo

Date of excavation – 16/5/17 Weather – Overcast with occasional light drizzle

PORTHLOO

Trial Pit Number	Depth from beach level to bottom of excavation	Ordnance Datum Newlyn Level of beach prior to trial pit being undertaken (See Site Plan for level info.)
1	2m	c.3.2m (note sand levels appear lower than when topo survey undertaken)
2	2m	c.3.7m (sand level locally raised at this site)
3	2m	c.3.2m (sand levels appear lower than when topo survey was undertaken)

Pit 1 Results

1.2 – 2m (Ground Level) Loose sand with loose boulders and large cobbles (local beach material)

0.4 – 1.2 Brown Ram (relatively unconsolidated) – Medium dense gravel and sandy gravel with firm/stiff clay cement

0 (base of pit)-0.4m Light Grey Claystone, stiff to firm



Figs 1 and 2 – Pit 1



Fig 3 and 4 - Pit 1 mix of lumps of clay and ram from spoil heap



Fig 5 – Pit 1 Position beyond rocks at base of Bank

PIT 2

0.9 – 2.0m (ground level) Loose sand with individual boulders and large cobbles (local beach material)

0.3-0.9 Ram – sand, gravel and clay composite deposit (firm/stiff to dense/compact)

0.0 (base of pit) – 0.3 Stiff clay



Fig 6-7 – Pit 2



Fig 8 – Pit 8 position at base of rocks



Fig 9 – Lumps of ram from spoil heap

PIT 3

1.0-2.0 (ground level) Loose sand with loose boulders and large cobbles

0(base of pit) – 1.0m Stiff Clay



Fig 10 and 11 – Pit 3



Fig 12 – Pit 3 location



Fig 13 – Pit 3 – Clay in swing shovel