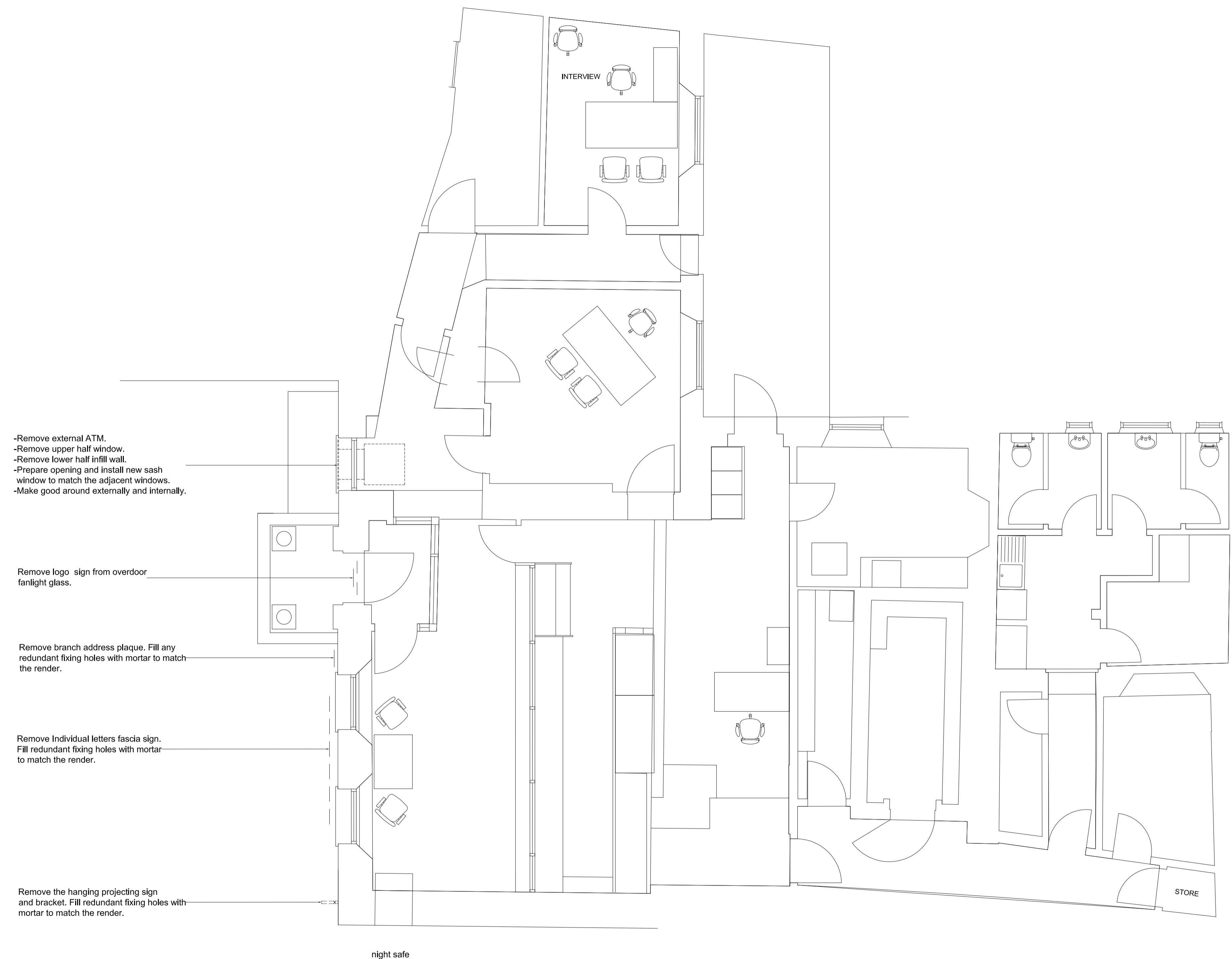
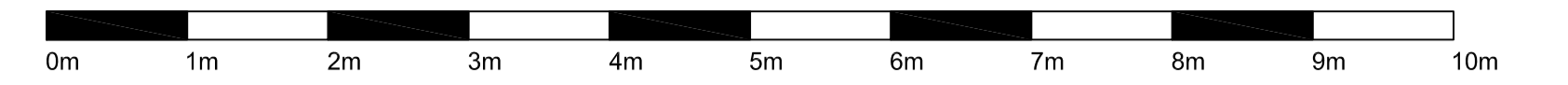


SCALE



-Remove external ATM.
 -Remove upper half window.
 -Remove lower half infill wall.
 -Prepare opening and install new sash window to match the adjacent windows.
 -Make good around externally and internally.

Remove logo sign from overdoor fanlight glass.

Remove branch address plaque. Fill any redundant fixing holes with mortar to match the render.

Remove Individual letters fascia sign. Fill redundant fixing holes with mortar to match the render.

Remove the hanging projecting sign and bracket. Fill redundant fixing holes with mortar to match the render.

night safe

STORE

RECEIVED
 By Liv Rickman at 10:24 am, Jan 21, 2022

REV	DATE	REVISION	INITIALS
LLOYDS BANKING GROUP			
ALL DIMENSIONS TO BE VERIFIED PRIOR TO COMMENCING WORK. DRAWING TO BE READ IN CONJUNCTION WITH PROJECT SPECIFICATIONS.			
THIS DRAWING IS THE PROPERTY OF LLOYDS BANKING GROUP AND COPYRIGHT IS RESERVED BY THEM. THE DRAWING IS ISSUED ON CONDITION THAT IT IS NOT COPIED OR DISCLOSED BY OR TO ANY UNAUTHORISED PERSONS WITHOUT PRIOR CONSENT IN WRITING TO LLOYDS BANKING GROUP - GROUP PROPERTY. ALL MODIFIED DRAWINGS SHOULD BE RETURNED TO LLOYDS BANKING GROUP.			
GROUP PROPERTY			
BRISTOL - PO Box 112, Canons House, Canons Way, BRISTOL, BS99 7LB EDINBURGH - Sighthill South, 12 Bankhead Crossway South, EDINBURGH, EH11 4EN HALIFAX - Trinity Road, HALIFAX, West Yorkshire, HX1 2RG			
PROJECT ADDRESS		SCALE	
Brand - Lloyds TSB		A1 - 1:50	
St. Mary's Isles Of Scilly		A3 - 1:100	
P.O. Box 2		DATE	
ST MARY'S TR21 0PW		01/22	
DRAWING DESCRIPTION		DRAWN BY	
Ground Floor Plan		TJ	
As Proposed		REVISION	
DRAWING NUMBER		-	
50252700-AR01-00-0110			