

Building Materials

Roof: Grey fibre-cement slates
 External Walls: Stone grey composite re-cycled cladding to match house
 Windows and doors: Anthracite grey upvc or aluminium
 Rainwater goods: Colour-coated steel Lindab gutters and downpipes

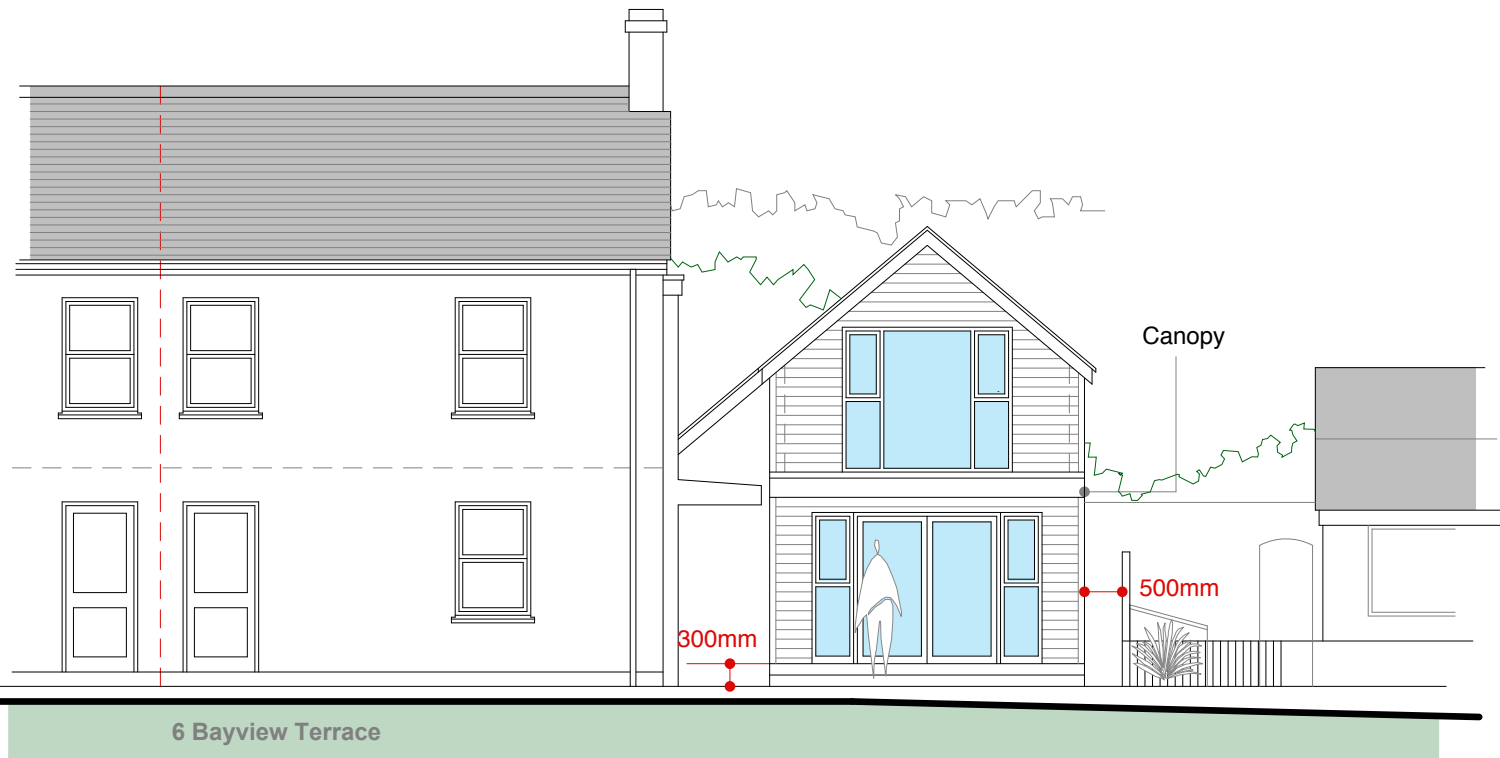


Cladco Stone Grey composite cladding to match house

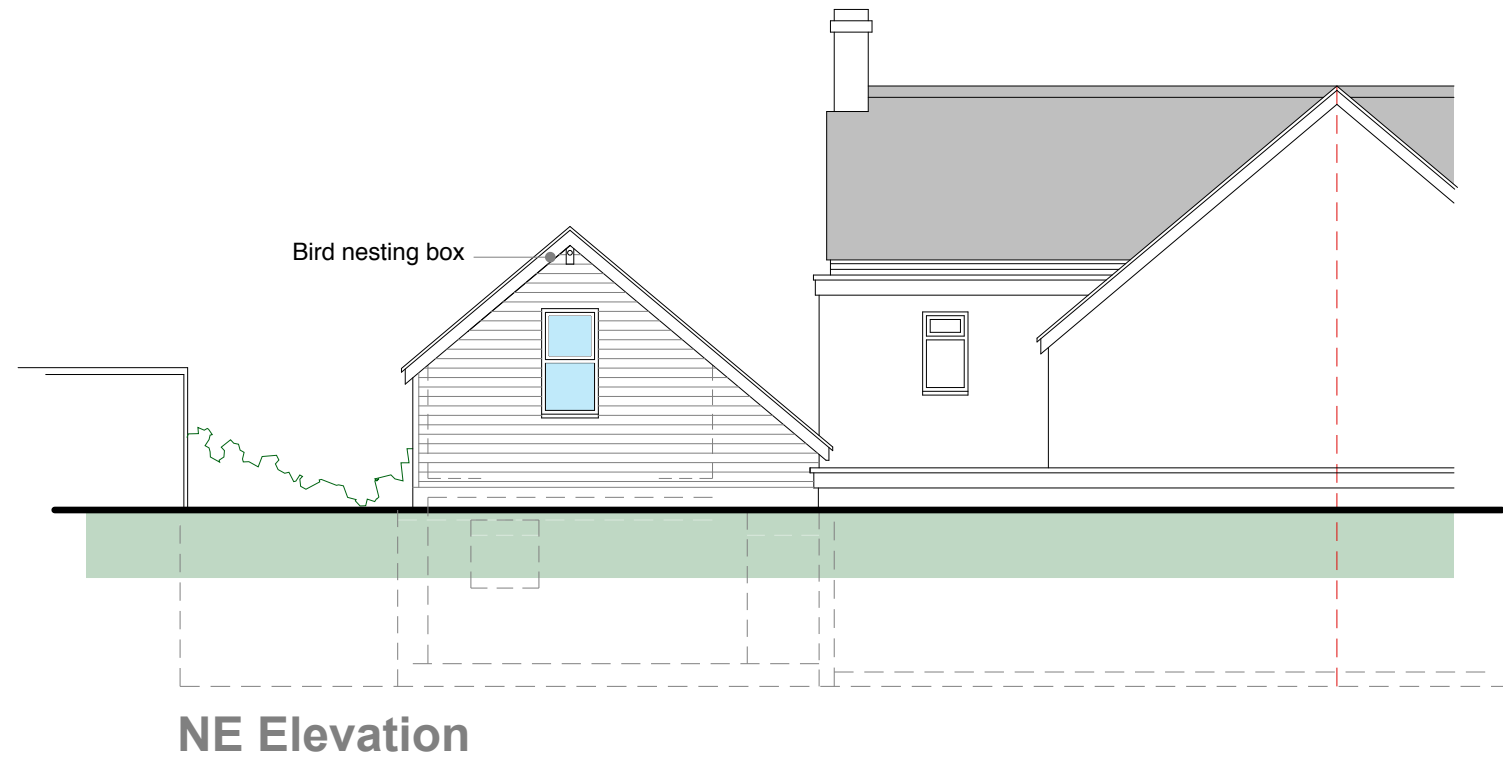
AMENDMENTS

- A Two-storey wing repositioned further from boundary wall
 MRB 101122

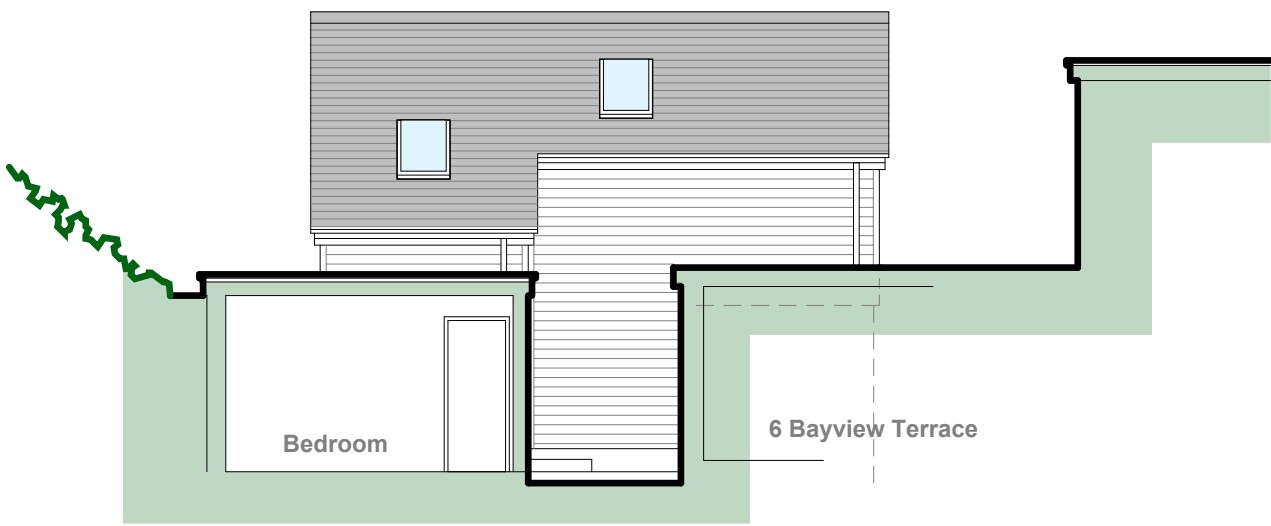
RECEIVED
 By Lisa Walton at 11:21 am, Nov 14, 2022



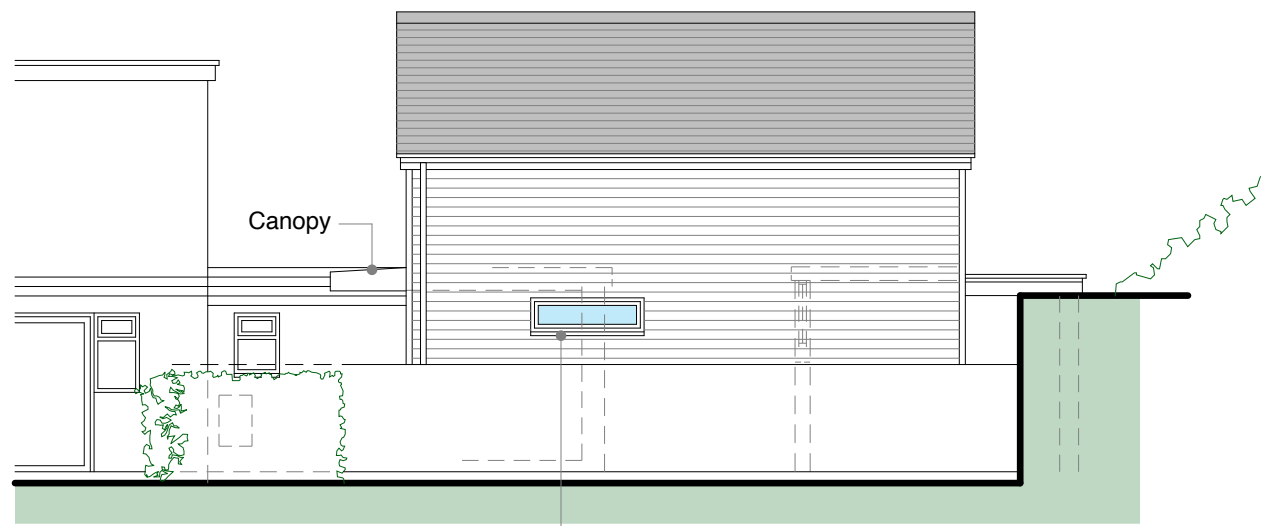
SW Elevation



NE Elevation



NW Elevation



SE Elevation

PLANNING

Studio St Ives
 4 Gabriel Street
 St Ives
 TR26 2LU
 01736 798427

MIKE BRADBURY DESIGN

JOB
Reconstruction of Chalet at 6 Bayview Terrace Portmellon St. Mary's Isles of Scilly for Mike Green & Hannah Barclay

TITLE Proposed Elevations	
DRNG. NO. 2018-P05	REVISION A
SCALE 1:50 @ A1 1:100 @ A3	DATE May 2022
OFFICE USE / PRE-ISSUE	