

**Building Materials**

Roof: Grey fibre-cement slates  
 External Walls: Stone grey composite re-cycled cladding to match house  
 Windows and doors: Anthracite grey upvc or aluminium  
 Rainwater goods: Colour-coated steel Lindab gutters and downpipes

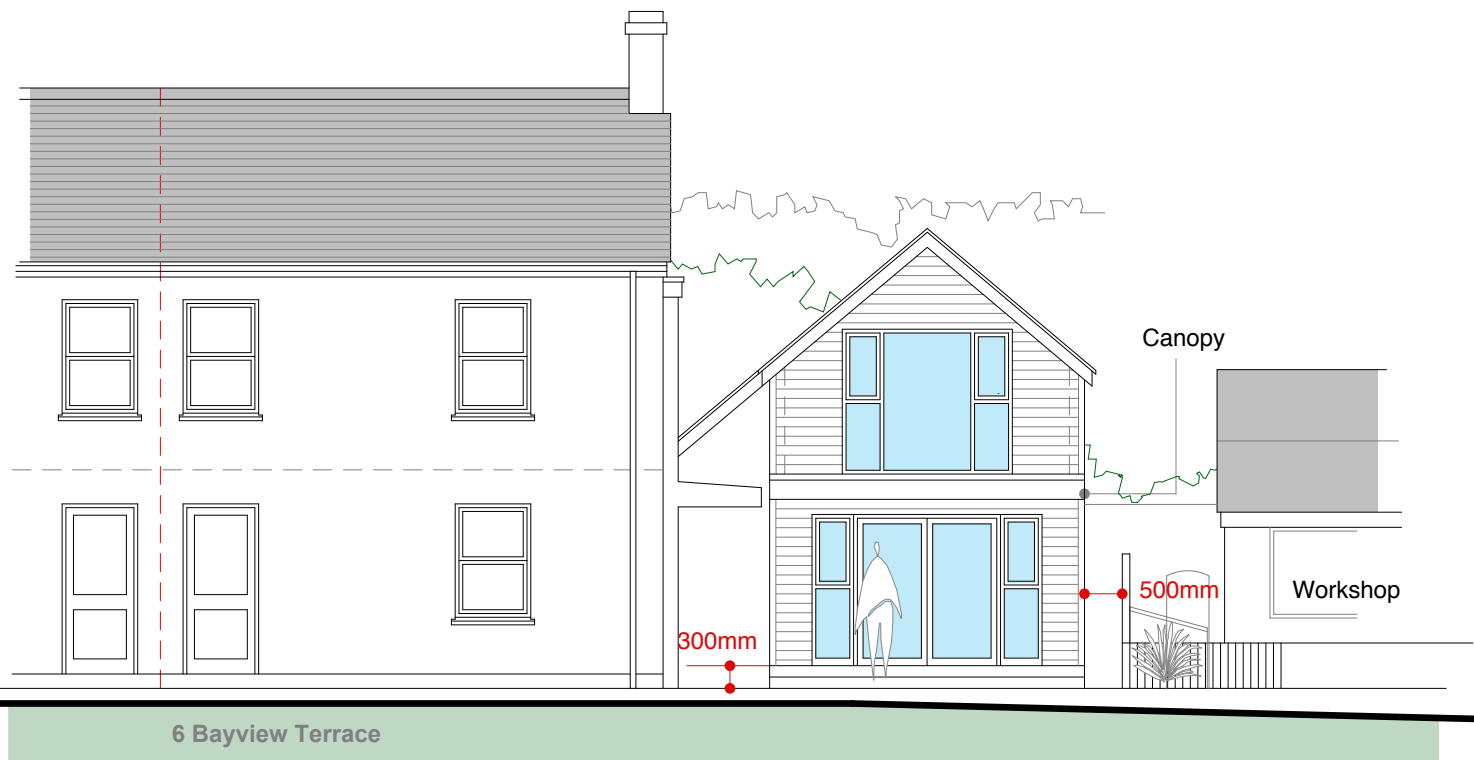


Cladco Stone Grey composite cladding to match house

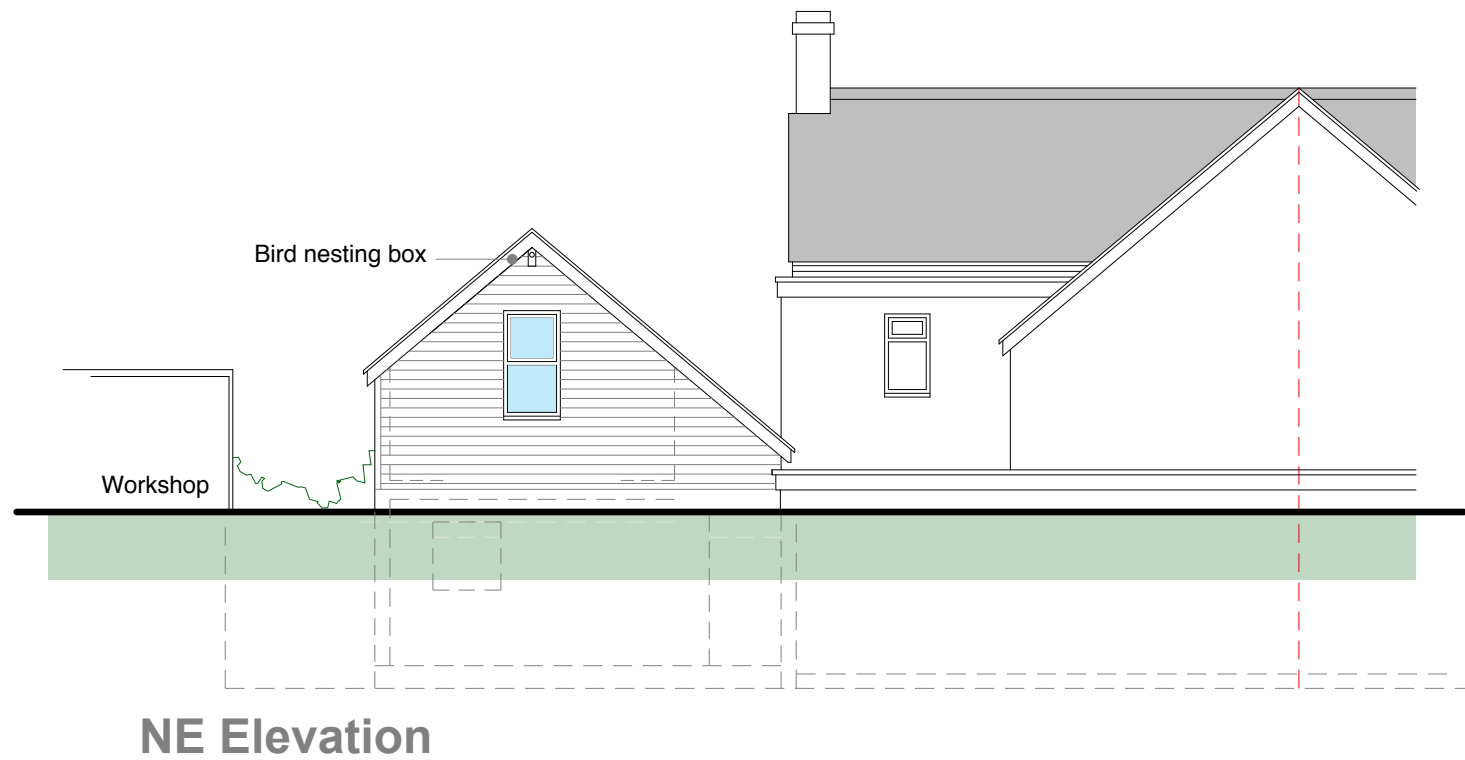
**RECEIVED**  
 By Lisa Walton at 9:53 am, Dec 01, 2022

**AMENDMENTS**

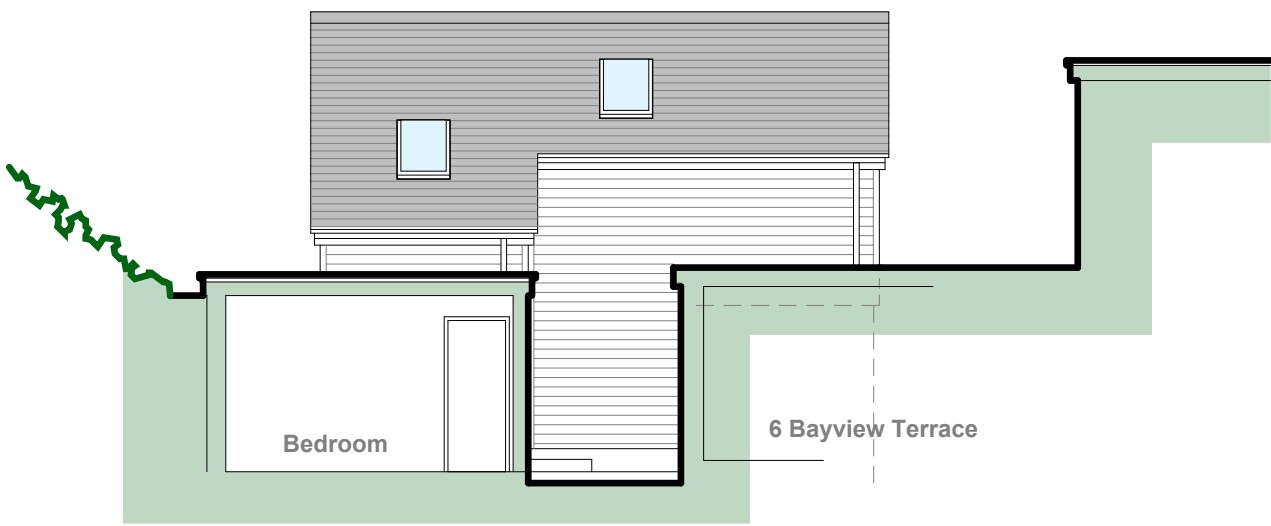
- A Two-storey wing repositioned further from boundary wall MRB 101122
- B Proximity of neighbour's outbuilding to chalet corrected MRB 251122



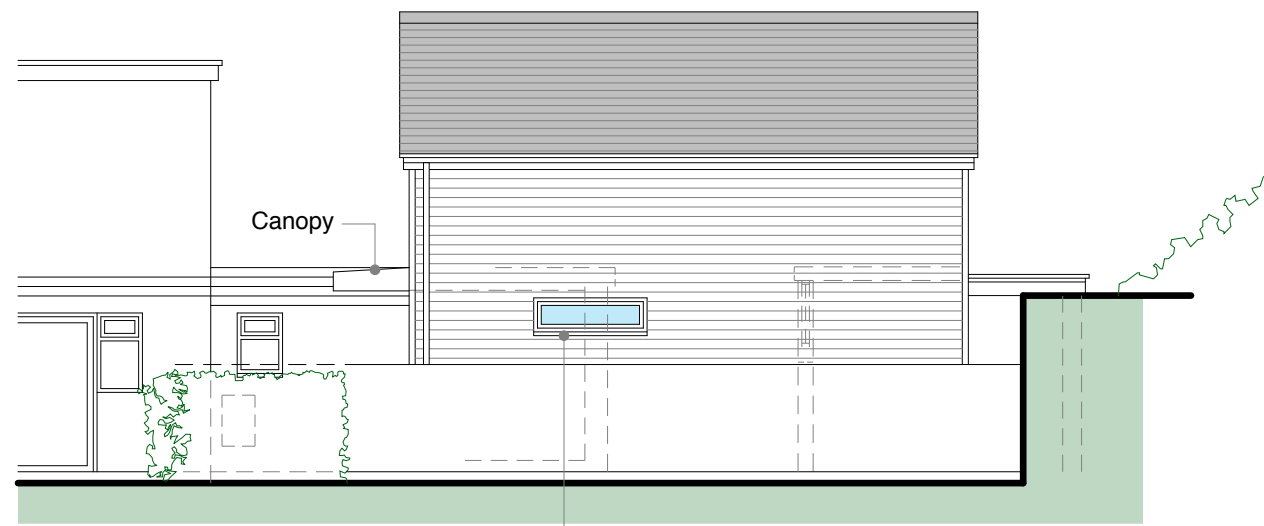
**SW Elevation**



**NE Elevation**



**NW Elevation**



**SE Elevation**

**PLANNING**

Studio St Ives  
 4 Gabriel Street  
 St Ives  
 TR26 2LU  
 01736 798427

**MIKE BRADBURY DESIGN**

JOB  
**Reconstruction of Chalet at 6 Bayview Terrace**  
 Portmellon  
 St. Mary's Isles of Scilly for Mike Green & Hannah Barclay

TITLE  
**Proposed Elevations**

DRNG. NO. <b>2018-P05</b>	REVISION <b>B</b>
SCALE <b>1:50 @ A1</b> <b>1:100 @ A3</b>	DATE <b>May 2022</b>
OFFICE USE / PRE-ISSUE	