

HR Wallingford has prepared this document under the terms of the contract between them and their client, for the exclusive use of that client. HR Wallingford accepts no liability for any use of this document other than by their client and then only for the purposes for which it was prepared. No warranty is given for any third party data included in this document.

NOTES:

- ALL DIMENSIONS ARE IN MILLIMETRES UNLESS OTHERWISE STATED.
  - REINFORCEMENT IDENTIFICATION:
    - 9H12 - 01 - 150 REBAR SPACING
    - BAR MARK BAR DIAMETER
    - REBAR TYPE
    - QUANTITY OF REBARS
  - NOMINAL COVER TO OUTER LAYER OF REINFORCEMENT TO BE NOT LESS THAN 60mm ( $\Delta c = 10\text{mm}$ ).
  - REINFORCEMENT TO BE GRADE H (AS DEFINED IN BS8666:2005).
  - REINFORCEMENT TO COMPLY WITH THE REQUIREMENTS OF THE PROJECT CONSTRUCTION SPECIFICATION (DKR6499-RT010).
  - ALL CRANKS TO BE AT 1V:10H.
  - FOR GENERAL NOTES REFER TO DRAWING DKR6499/000/D102.
  - FOR SITE 2/3B GENERAL ARRANGEMENT REFER TO DRAWING DKR6499/210/D111.
  - FOR REINFORCED CONCRETE SLAB STRUCTURAL DETAILS REFER TO DRAWING DKR6499/210/D323.
  - ABBREVIATIONS:
    - T TOP
    - T1 TOP OUTER LAYER
    - T2 TOP SECOND LAYER
    - B2 BOTTOM SECOND LAYER
    - B1 BOTTOM OUTER LAYER
    - B BOTTOM
    - EF EACH FACE
    - NF NEAR FACE
    - FF FAR FACE
    - AB ALTERNATE BAR
    - ABR ALTERNATE BARS REVERSED
    - STGD STAGGERED
- NUMBER OF BARS PLACED TOGETHER  
IN 3's  
IN 2's

**RECEIVED**  
By Lisa Walton at 12:44 pm, Oct 31, 2022

01	ISSUED FOR REVIEW	WST	MGO	AGC	05 AUG 22
REV	DRAWING STATUS	DRN.	APPR	AUTH.	DATE

CLIENT:

**THE COUNCIL OF  
THE ISLES OF SCILLY**

MARINE CONSULTANT:

**HR Wallingford**  
Howbery Park, Wallingford  
Oxfordshire OX10 8BA  
United Kingdom  
Tel: +44(0)1491 835381  
Fax: +44(0)1491 832233  
[www.hrwallingford.com](http://www.hrwallingford.com)

PROJECT:  
**ISLES OF SCILLY  
DESIGN SERVICES FOR OFF ISLANDS  
COASTAL EROSION DEFENCE AND  
DUNE MANAGEMENT**

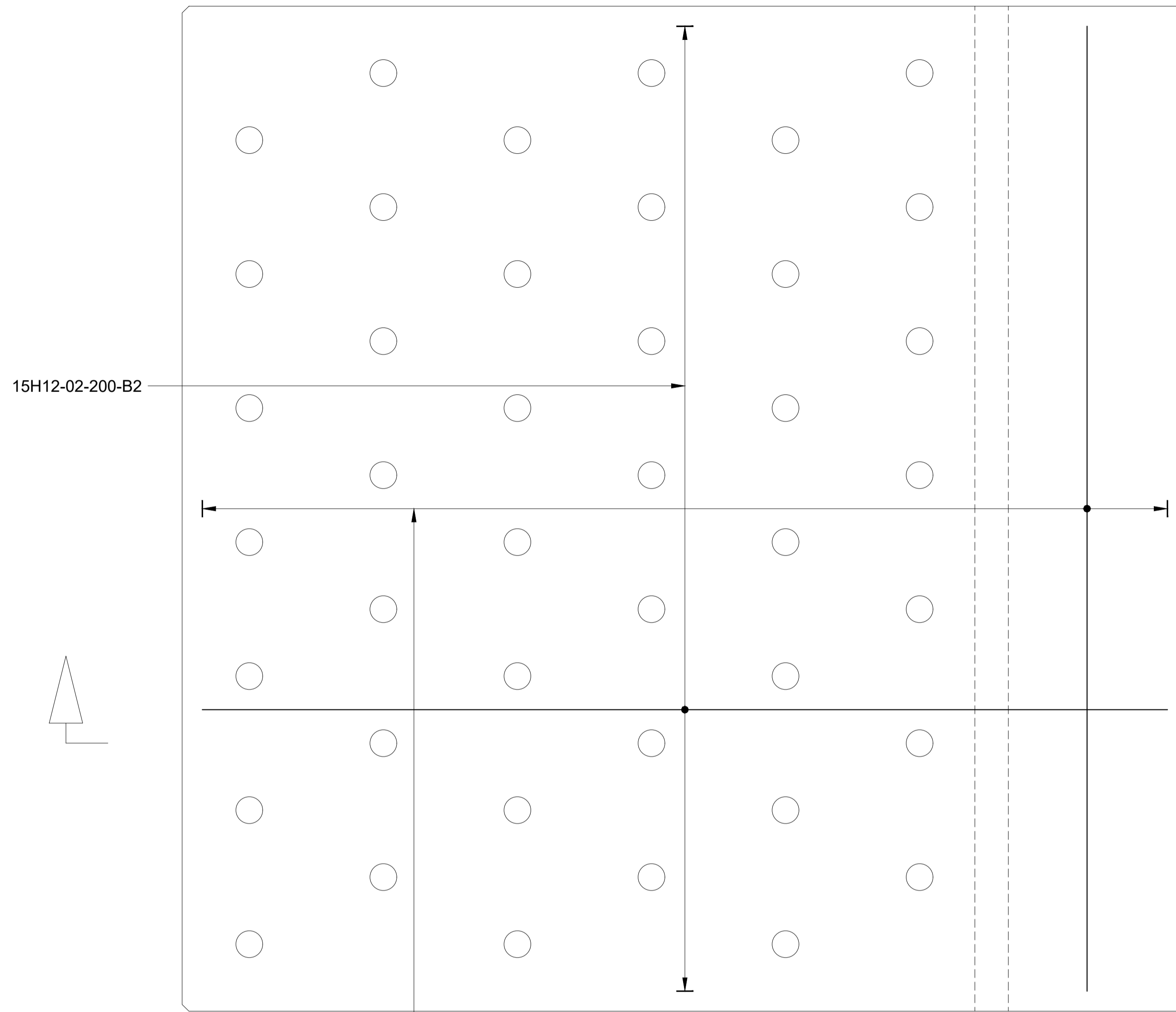
DRAWING TITLE:  
**BRYHER 2/3B  
GREAT PORTH NORTH  
REINFORCED CONCRETE SLAB  
REINFORCEMENT DETAILS**

SCALE:  
**1:10**

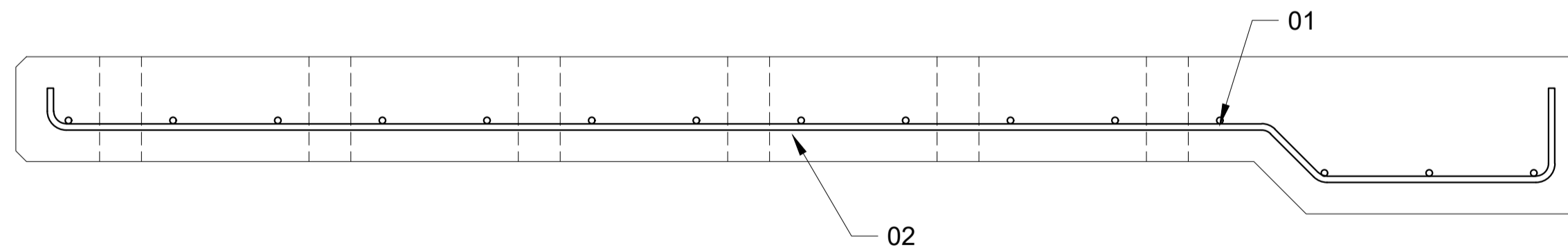
SHEET SIZE:  
**A1**

DRAWING No:  
**DKR6499-210-D324**

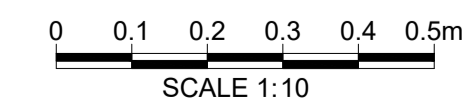
REV:  
**01**



15H12-01-200-B1 PERFORATED REINFORCED CONCRETE SLAB (1 NO.)  
SCALE: 1:10



SECTION A-A  
SCALE: 1:10



I:\hrw\uk\local\projects\live\dkr6499\5\_deliverables\drawings\Current Drawings\DKR6499-210-D324 [01]\_Great Porth North Concrete Slab RC Details\_01.dwg WST 05/08/22