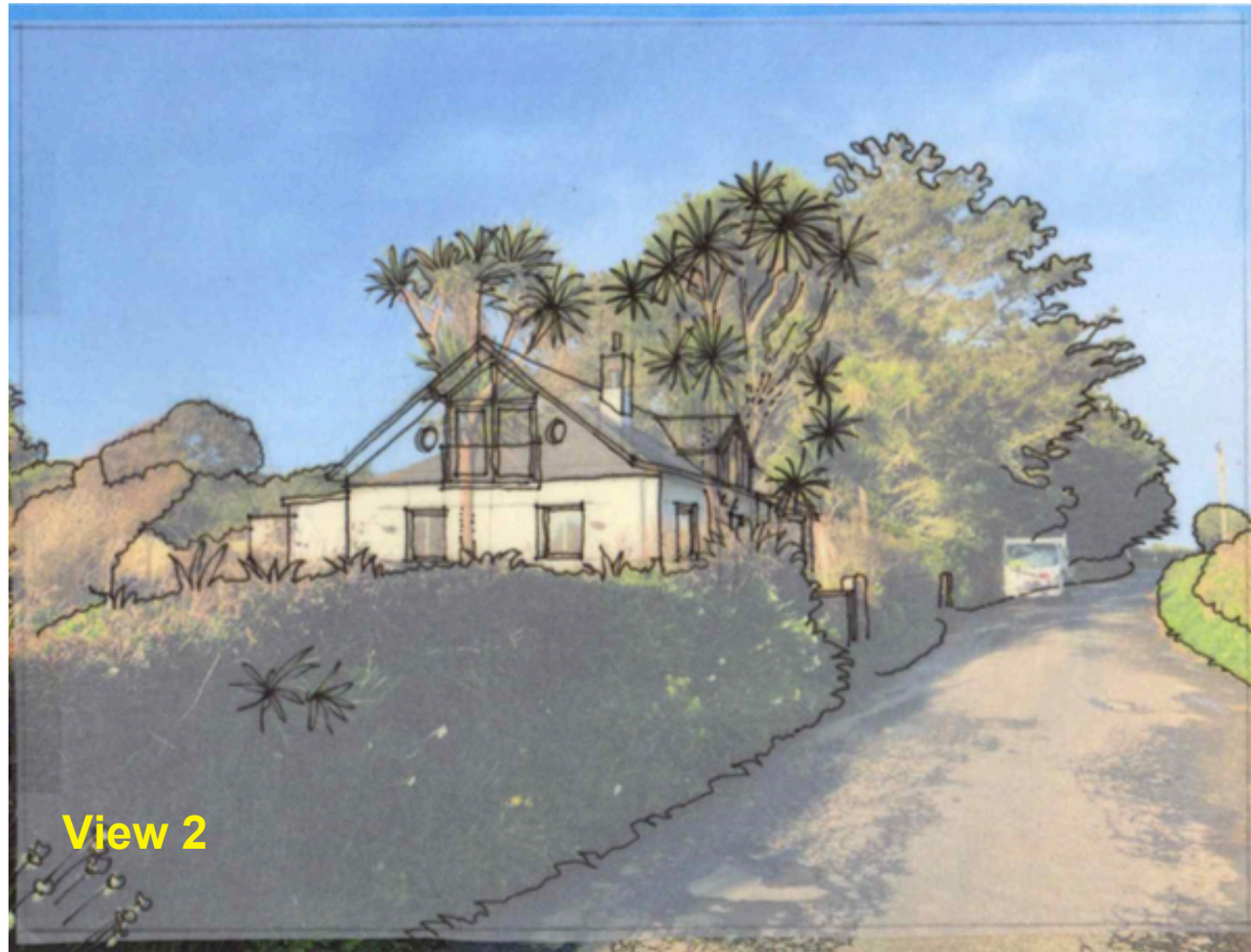




View 1



View 3



View 2

RECEIVED
By A King at 1:54 pm, Sep 01, 2023

Notes on Views:

View 1: Distant view from Porth Loo Lane facing North. From this angle Bishop View sits in front of a backdrop of conifers and does not break the sky-line. The multi-headed group of palm trees partially obscure the front elevation and new dormer window

View 2: Closer view of Bishop View from the main road facing the same direction. The stems of the palm trees have been removed to show the profile of the front elevation dormer. The rear 'wing' is hidden by the new main roof structure

View 3: Approaching Bishop View from the North along Porth Loo Lane, the property is hidden by the existing landscape until the entrance driveway is reached. The palm trees and copse of trees frame the view of the bungalow. Ground floor windows and the garage door are unchanged. Although the roof-line is to be raised, the overall impact of the building sitting comfortably in the surrounding landscape is not unduly changed

PLANNING

Studio St.Ives
4 Gabriel Street, St.Ives
TR26 2LU
01736 798427

**MIKE BRADBURY
DESIGN**

JOB
**Extension and Alterations to
Bishop View
Porth Loo Lane
St.Mary's
Isles of Scilly**

TITLE
Photomontage Views

DRNG. NO. REVISION
2024-P09

SCALE DATE
NTS August 2023

OFFICE USE / PRE-ISSUE