

## Porthmellon Waste Site, St Mary's

### Design and Access Statement

*Proposed three-year location for five storage containers.*

#### Containers

- Space is required for five 20ft x 8ft x 8ft hardstanding storage containers, which will be connected to an existing, accessible power supply.
- The containers are adapted on the mainland and shipped to us complete, so there will be no waste produced on-island.
- Three-year storage to enable work on wider Council project and support transitional arrangements required for the redevelopment of the Town Hall into a Cultural Centre and Museum.
- The colour of the containers will be Agate Grey RAL 7038 for solar gain control and to blend in with the surrounding buildings.

#### Ventilation/Extraction

- Each container will have an air conditioning unit to control fluctuations in temperature and humidity and provide adequate storage conditions during the transition from the Town Hall building.

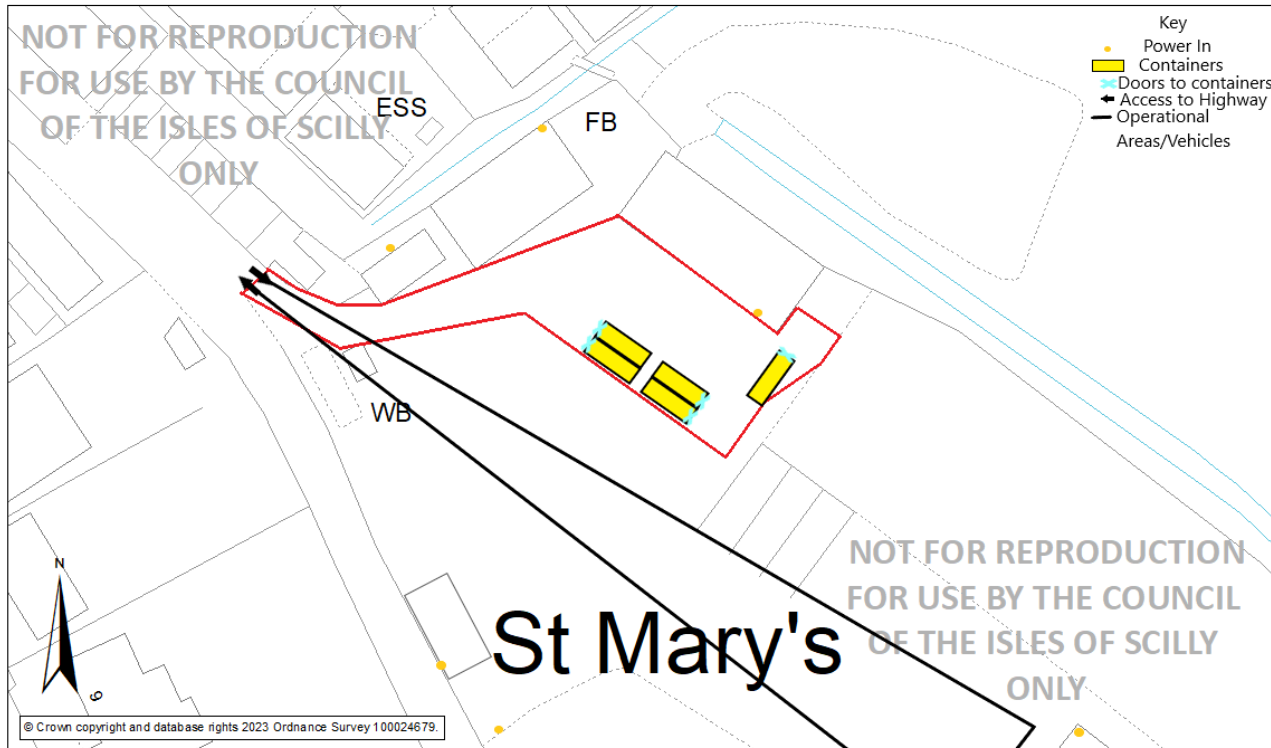
#### Proposed Site and Access

- The proposed site is the Porthmellon Waste Site. This is an operational waste site, but also contains storage, is accessible, has an existing power supply, and will be unaffected visually or operationally by the addition of containers.
- **Entrances to site** – The containers will be accessed through the main entrance to the waste site in line with the operational site access requirements.
- **Access to site** – The containers will be outside of the operational areas and not affect waste operations or vehicular access. The containers will be in the engineering area, which already contains storage. Access to the containers will be infrequent and arranged in advance with the site operators.
- **Approval from site users** – Works are currently underway at the site to rationalise the space. The site managers have assessed the site use and available space to determine the best location that will have minimal impact on day-to-day waste operations. This is in line with Policy OE5, ensuring that development proposals do not affect the use of waste sites.
- **Visual Impact** – None of the containers will be visible to the public as they will be in the engineering area.

# Site Access

**Porthmellon Waste & Recycling Centre, Moorwell Lane, St Mary's, Isles of Scilly**

## **BLOCK PLAN**



1:500 @A4

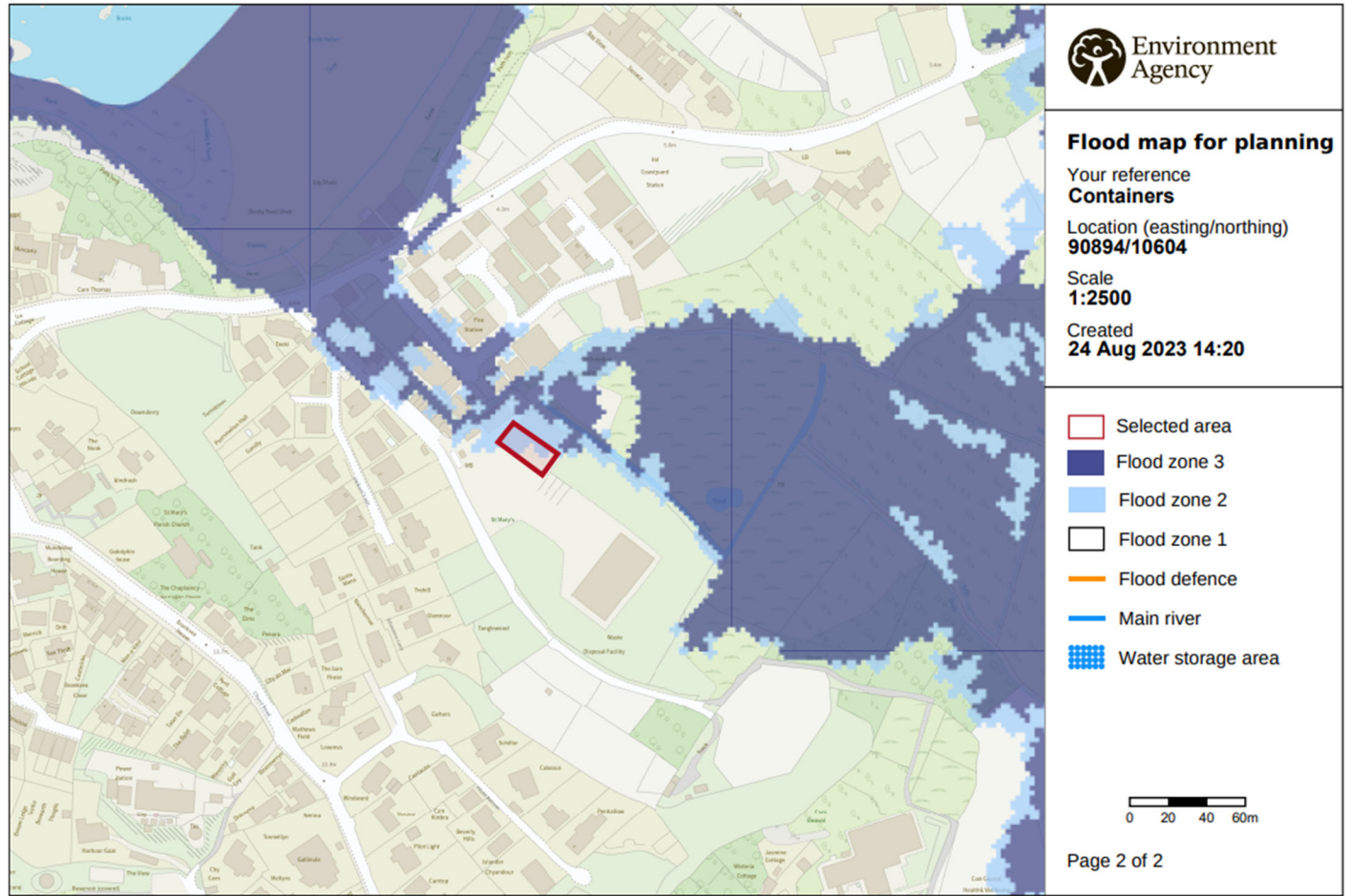
0 2.5 5 10 15 20 25 Meters

For use and reproduction by the Council of the Isles of Scilly only.

Council of the Isles of Scilly, Town Hall, The Parade, St Mary's, Isles of Scilly, TR21 0LW



# Flood Risk Assessment



© Environment Agency copyright and / or database rights 2022. All rights reserved. © Crown Copyright and database right 2022. Ordnance Survey licence number 100024198.

A Flood Risk Assessment is included in this submission as the containers are within Flood Zone 2.

Photos



Similar container for reference



Colour of containers