

RECEIVED

By Lisa Walton at 9:19 am, Dec 01, 2023

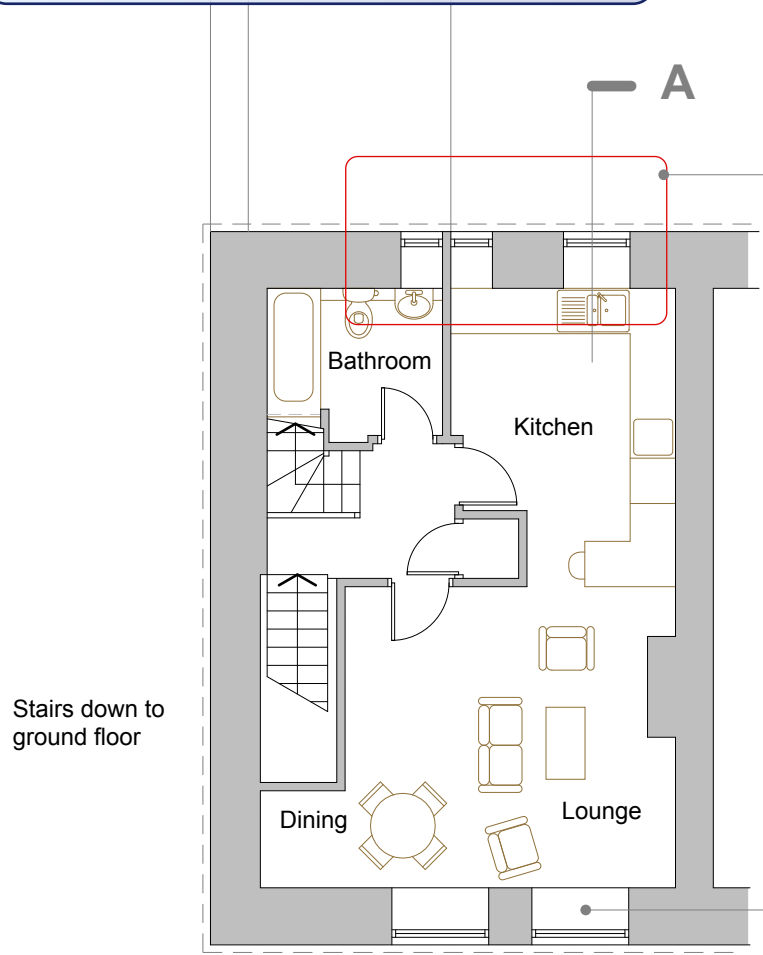


NOTES

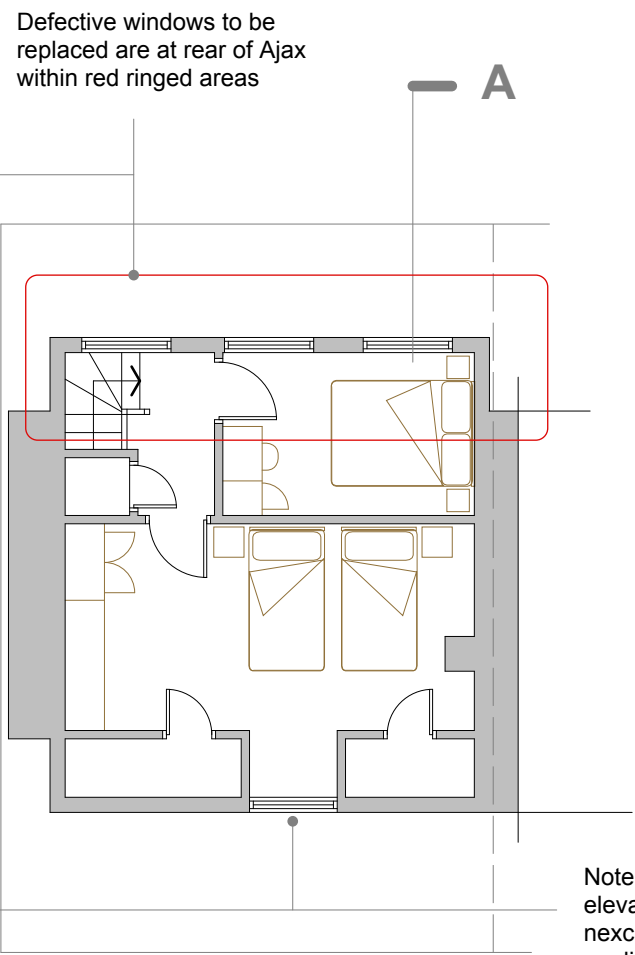
- 1 THIS DRAWING IS THE COPYRIGHT OF THE ARCHITECT AND MAY NOT BE REPRODUCED WITHOUT LICENCE
- 2 ALL DIMENSIONS AND LEVELS ARE TO BE CHECKED ON SITE BY THE CONTRACTOR BEFORE COMMENCEMENT OF WORK AND ANY DISCREPANCIES REPORTED TO THE ARCHITECT
- 3 NO RESPONSIBILITY CAN BE ACCEPTED FOR ERRORS ARISING ON SITE DUE TO UNAUTHORISED VARIATIONS FROM THE ARCHITECTS DRAWINGS.

AMENDMENTS

A Window details added MRB 301123



First Floor



Second Floor

Defective windows to be replaced are at rear of Ajax within red ringed areas

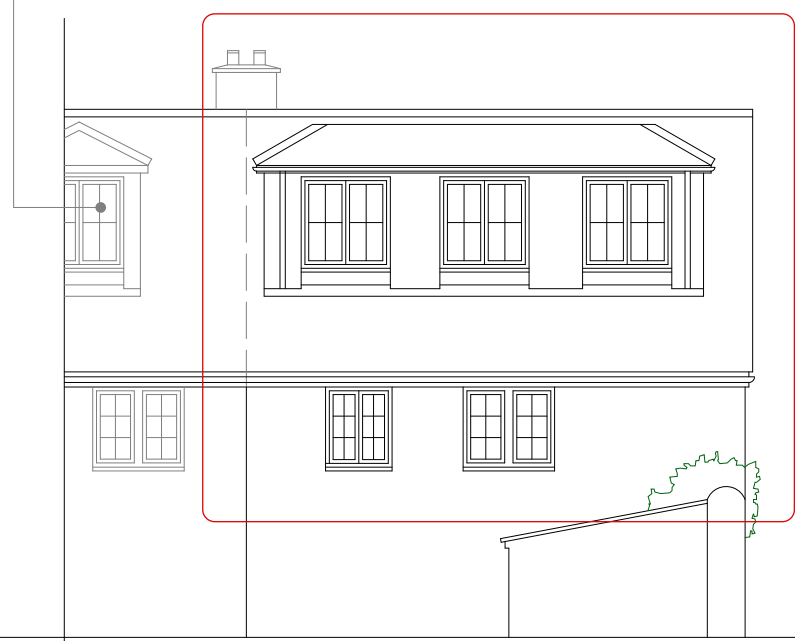
Note: Windows on front elevation facing The Strand are nexcluded from this planning application

Window Details



Image of a brown uPVC window from the Rehau UK Ltd 70mm range installed in granite external walls similar to Ajax. Windows are available locally from C&R Plastics Ltd in Camborne

Brown uPVC windows in neighbouring property



Part Rear Elevation

Replacment wndows in brown upvc Proportions to match existing style

Replacment wndows in brown upvc Proportions to match existing style

Section A-A



REHAU TOTAL70c is our original 70mm Chamfered window and door system but now with added multi-chambered profiles

This enables maximum thermal efficiency for windows without the need for more expensive glass, making them more cost effective and giving you even more savings on your energy bills. This system is available in French and casement windows, tilt & turn windows, horizontal pivot windows and bay and bow windows. Also, a choice of door styles such as residential, tilt/turn patio doors and French doors. Our chamfered system is simple yet elegant, helping to create beautiful contemporary frames for your home.

Typical section (note: illustration shows window in white not brown)

For further details of the Rehau Total 70 range refer to the Rehau website: www.rehau.com

PLANNING

Studio St.Ives
4 Gabriel Street, St.Ives
TR26 2LU
01736 798427

MIKE BRADBURY DESIGN

**Alterations to Ajax
The Strand
Hugh Town
St.Mary's
Isles of Scilly for
Emma Johnson**

Proposed Plans

DRNG. NO.	REVISION
2038A-P02	A

SCALE	DATE
1:50 @ A1 1:200 @ A3	Aug 2023

OFFICE USE / PRE-ISSUE