



Front Elevation

1 : 50



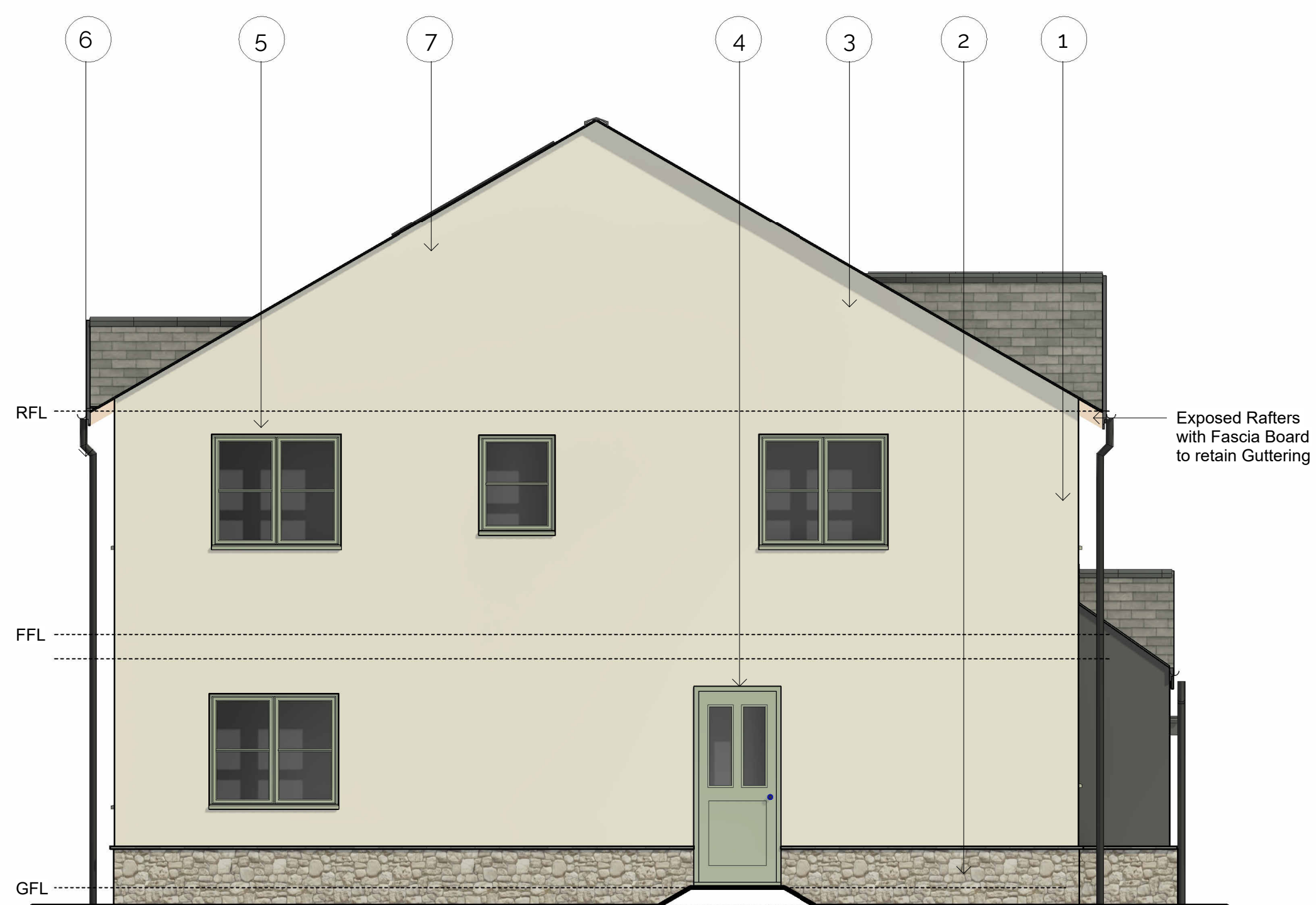
Side Elevation A

1 : 50



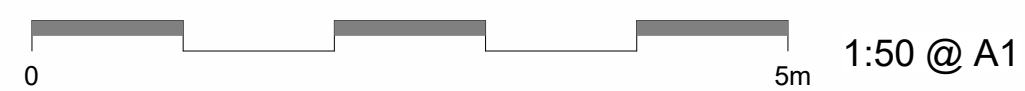
Rear Elevation

1 : 50



Side Elevation B

1 : 50



Contractors to check all dimensions on drawings.
 Any discrepancies must be reported to KTA Architects Ltd or the contract administrator before proceeding.
 Do not scale except for planning purposes, work to figured dimensions.
 A Fire Consultant must be appointed for this project. KTA drawings & schedules to be read in conjunction with the Fire Consultant Fire Strategy Report.
 The Fire Strategy Report takes precedence over any KTA drawing or schedule & any discrepancy should be brought to KTA's attention.
 This drawing must be read in conjunction with all relevant consultants drawings.
 This drawing is © KTA Architects Ltd.

Revision Schedule			
Revision Number	Revision Date	Revision Description	Issued/ Authorised by
P2	MAR 2024	IRMA ISSUE	OMS/AC
P1	FEB 2020	DRAFT ISSUE	MC/AC

- Materials Key**
- 1 Painted Render - colour tbc
 - 2 Natural Stone Plinth
 - 3 Natural Slate Tile Roof
 - 4 Composite Timber Doors - colour tbc
 - 5 Timber Windows - colour tbc
 - 6 Colour Coated Aluminium Gutters/Downpipes - colour tbc
 - 7 Integrated Solar Panels

HOUSETYPE D
 2 Bed 4 Person
 Semi Detached

Part M(4) Category 2

2B/4P Housetype D - Front Entrance
 GIA: 89.2m²
 Storage Area: 4.21m²
 Minimum GIA = 79m²
 (Technical housing standards - nationally described space standard)

Plot No.	House Type	Max. Plot Height
1	E	7.1m
2	E	7.1m
3	E	7.2m
4	F	7.1m
5	F	7.2m
6	F	7.2m
7	F	7.1m
8	F	7.2m
9	F	7.1m
10	Bespoke Unit	7.2m
11	D	8.4m
12	D	8.4m

* Refer to Outline Planning Permission for Development, Section C11: Restrictions of Building Height. Height measured from GFL to Ridge.

PLANNING ISSUE

KTA
 Architects | Urban Designers

Winslade House, Winslade Park, Manor Drive,
 Clyst St. Mary, Exeter, EX5 1FY

Tel: 01392 360338
 Email: kt@kta.uk.com
 Web: www.kta.uk.com

Project	Ennor Housing, Scilly	Isles of Scilly
Title	Housetype D - Typical Elevations	
Author	OMS/AC	Scale 1 : 50 @ A1
Checked by	AC	
Project	2002	Status Pre Construction
Drawing number	2002-SC-KT-XX-DR-A-SK270-50	P2

RECEIVED
 By Liv Rickman at 3:22 pm, Mar 26, 2024

04MP 128 10.0 74/11/2022
 1:50 @ A1
 04MP 128 10.0 74/11/2022