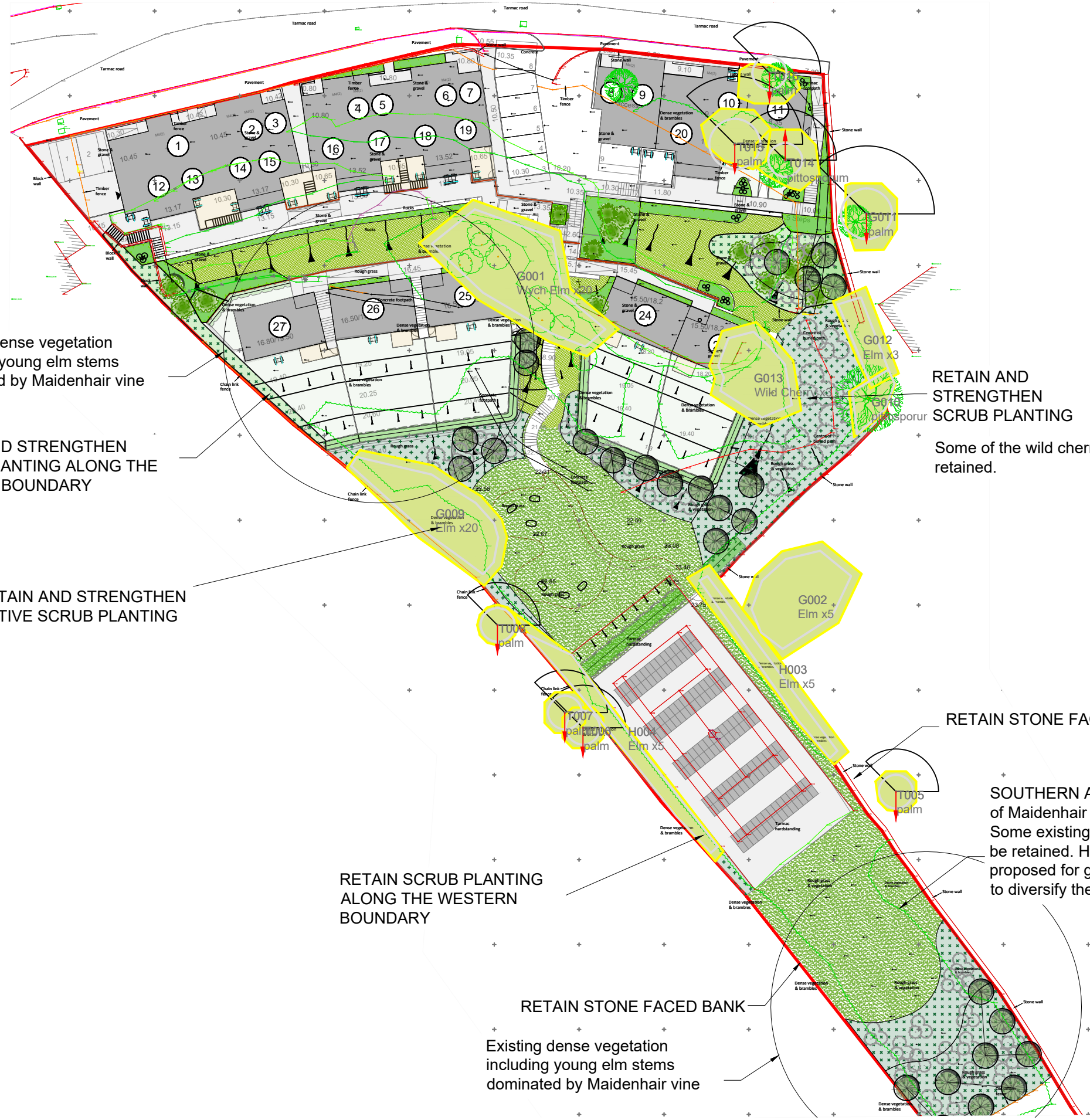


RECEIVED

By Liv Rickman at 10:19 am, Aug 22, 2024



Existing dense vegetation including young elm stems dominated by Maidenhair vine

RETAIN AND STRENGTHEN SCRUB PLANTING ALONG THE WESTERN BOUNDARY

RETAIN AND STRENGTHEN NATIVE SCRUB PLANTING

RETAIN SCRUB PLANTING ALONG THE WESTERN BOUNDARY

RETAIN STONE FACED BANK
Existing dense vegetation including young elm stems dominated by Maidenhair vine

RETAIN AND STRENGTHEN SCRUB PLANTING

Some of the wild cherry may be retained.

RETAIN STONE FACED BANK

SOUTHERN AREA - Management of Maidenhair Vine is necessary. Some existing young elms would be retained. However area proposed for grassland and scrub to diversify the ecology.

FOR INFORMATION

Rev.	Date

Foxford Design
Chartered Landscape Architects
Huntsham Tiverton Devon EX16 7QH
Tel - 01884 - 821786



Project
Carn Thomas, St Marys

Drawing
ARBORICULTURAL SURVEY OVERLAY ON LANDSCAPE STRATEGY

Client
LIVE WEST

Date	Drawn	Drawing number	Revision
05-09-2022	CF	2225-20	-
Scale	Status		
1:250@A1	planning		

