

RECEIVED

By Liv Rickman at 1:06 pm, Apr 03, 2024

Landscape and Visual Impact Appraisal Part 2

VIEWPOINTS 1-30

PHOTOMONTAGES A - H

Former Secondary School Site,

Carn Thomas, Hugh Town, St Mary's

Isles of Scilly

Prepared for LiveWest

By Foxford Design



Views

Taken with Full Frame Canon EOS 6D Mark II with - 50mmf/1.4USM lens

Photo – Image size 390x260

Present as 360 x 240mm (Image “Enlargement” - 92,3%)

92.3% Reference Image

Presented Field of View HxV 39.6° x 27°

Data shown

Distance from site: measured from Google Earth

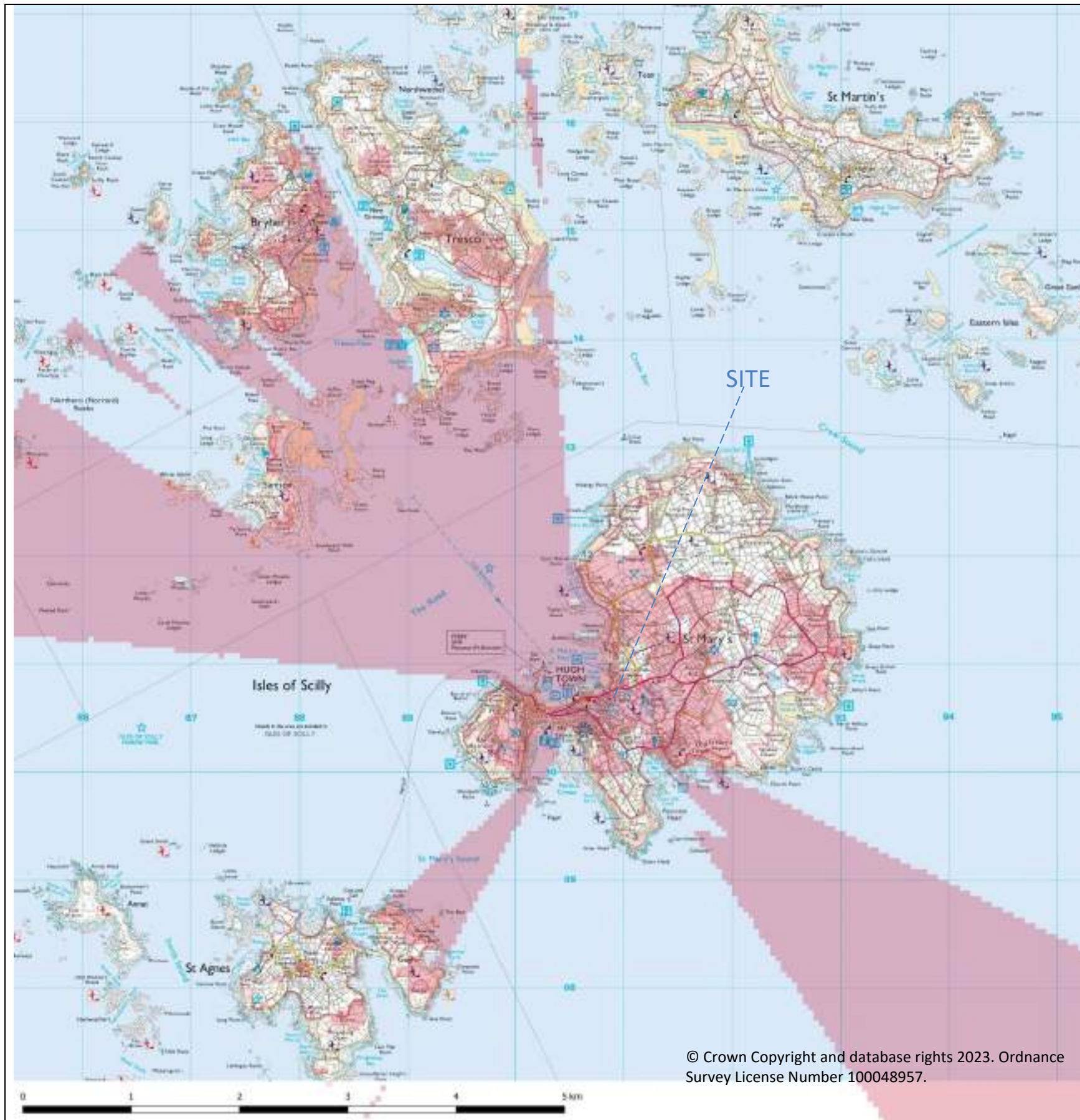
Bearing: taken in using Google Earth

GPS coordinate taken from Camera’s GPS Lat: 49 55 6.5 N Long: 06 19 40.5 W

Height taken from Google Earth Our photo ref: IMG xxx

Panorama- photo stitched with Photoshop Elements 2022 – for use for illustration purposes only

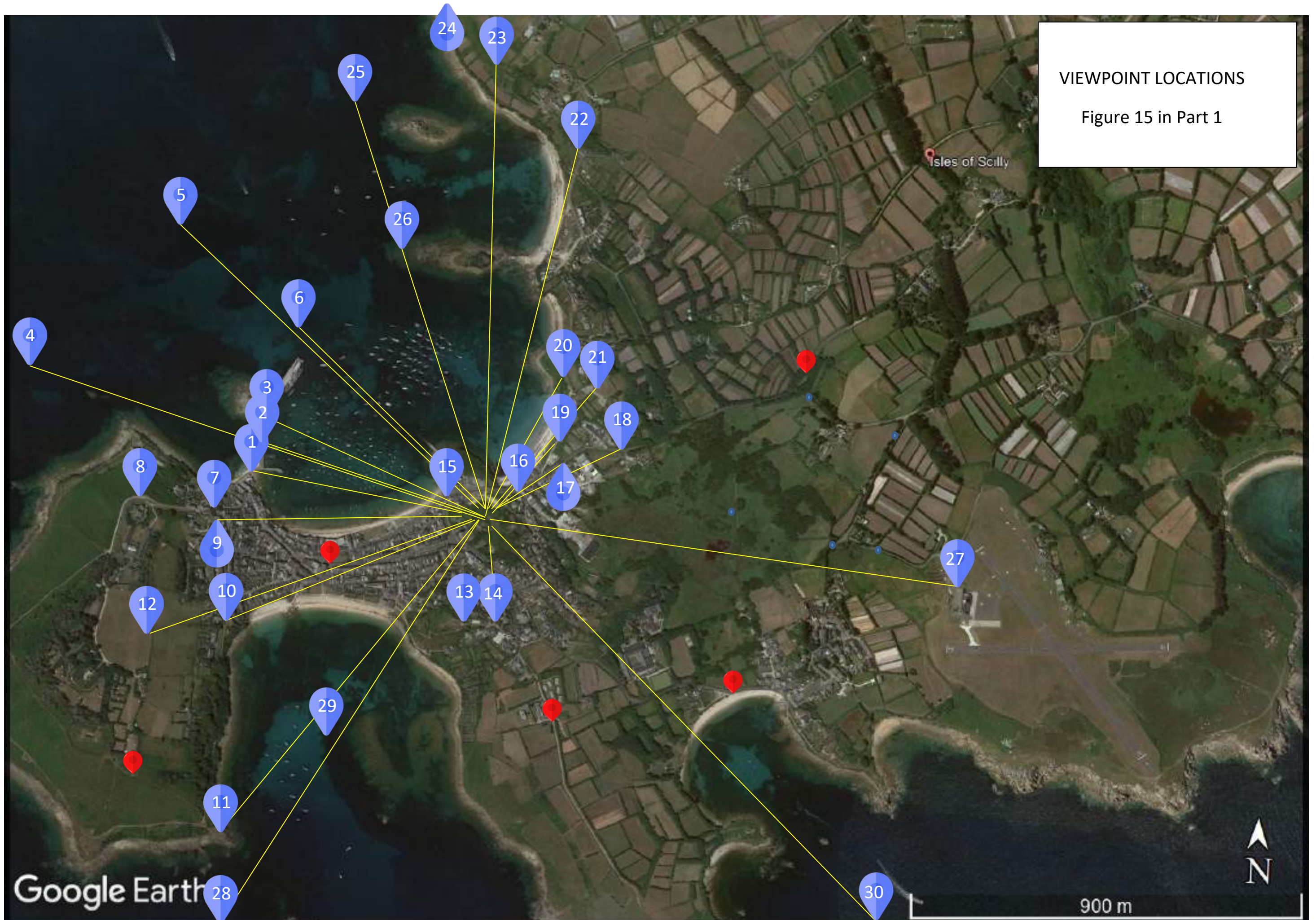
	<h1>VIEWPOINTS 1-30</h1>	
--	--------------------------	--



ZONE OF THEORETICAL VISIBILITY

VIEWPOINT LOCATIONS

Figure 15 in Part 1





VIEWPOINT 1

Location:
View from Quay / Harbour looking south east towards site

Distance from site: 555m
Bearing: 100°
GPS coordinate: Lat:49 54 58.6 N Long: 06 19 3.8 W
Height 3m
Our photo ref: IMG 5878



VIEWPOINT 2
See Photomontage A

Location:
View from Quay looking south east towards site

Distance from site: 545m
Bearing: 105°
GPS coordinate: Lat:49 55 0.7 N Long: 06 19 2.7 W
Height 2m
Our photo ref: IMG 5891



VIEWPOINT 3

Location:
View from northern end of the Quay looking south east towards site

Distance from site: 555m
Bearing: 110°
GPS coordinate: Lat:49 55 2.8 N Long: 06 19 2.1 W
Height 2m Our photo ref: IMG 6413



VIEWPOINT 4

Location:
View from sea to the west of the Quay looking east south east in the direction of the site

Distance from site: 1.23km
Bearing: 105°
GPS coordinate: Lat:49 55 6.5 N Long: 06 19 40.5 W
Height 0m Our photo ref: IMG 7078-lightened



VIEWPOINT 5

Location:
View from The Road out to sea north west of St Marys Pool looking south east
towards the site

Distance from site: 1.00km
Bearing: 130°
GPS coordinate: Lat:49 55 17.2 N Long: 06 19 14.3 W
Height 0m Our photo ref: IMG 7100



VIEWPOINT 6

Location:
View from boat leaving St Marys Pool looking south east towards site

Distance from site: 620m
Bearing: 130°
GPS coordinate: Lat:49 55 11.0 N Long: 06 19 1.3 W
Height 0m Our photo ref: IMG 6048



Viewpoint 7

Location:
View from lane, (Garrison Hill) near Garrison Gate looking across Town Beach
towards the site

Distance from site: 615m
Bearing: 90°
GPS coordinate: Lat:49 54 56.6 N Long: 06 19 8.0 W
Height 16m Our photo ref: 7332



Viewpoint 8

Location:
View from road near Star Castle Hotel looking across St Marys Pool towards the site.

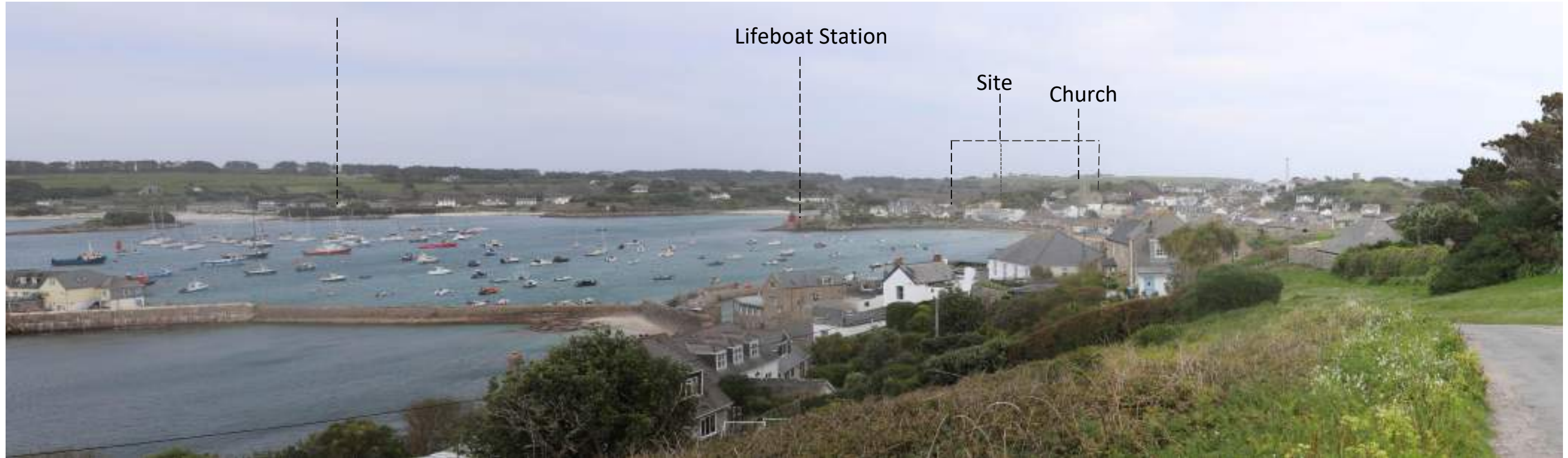
Distance from site: 770m
Bearing: 90°
GPS coordinate: Lat:49 54 56.6 N Long: 06 19 14.9 W
Height 25m Our photo ref: 6420

Porthloo

Lifeboat Station

Site

Church



Panorama at Viewpoint 8P

Location:
Panoramic View from near Star Castle Hotel looking across St Marys Pool
towards the site.

Distance from site: 770m
Bearing: 90°
GPS coordinate: Lat:49 54 56.6 N Long: 06 19 14.9 W
Height 25m Our photo ref: 6420



VIEWPOINT 9
See Photomontage B

Location:
View from the Battery near Garrison Gate looking east towards site

Distance from site: 620m
Bearing: 85°
GPS coordinate: Lat:49 54 55.0 N Long: 06 19 7.3 W
Height 19m Our photo ref: IMG 5904



Site

VIEWPOINT 10
See Photomontage C

Location:
View from Upper Benham Battery looking north east towards the site

Distance from site: 650m
Bearing: 65°
GPS coordinate: Lat:49 54 47.6 N Long: 06 19 5.7 W
Height 15m Our photo ref: IMG 5941



PANORAMA OF VIEWPOINT 10P

Location:
View from Upper Benham Battery looking north east towards the site

Distance from site: 650m
Bearing: 65°
GPS coordinate: Lat:49 54 47.6 N Long: 06 19 5.7 W
Height 15m Our photo ref: IMG 5939-5944



VIEWPOINT 11	Location: View from Morning Point looking north east towards site	Distance from site: 945m Bearing: 40° GPS coordinate: Lat:49 54 32.3 N Long: 06 19 5.4 W Height 4m Our photo ref: IMG 5965
---------------------	----------------------------------------------------------------------	----------------------------------------------------------------------------------------------------------------------------------------



Viewpoint 12

Location:
View from playing fields on The Garrison, looking east north east across Hugh
Town towards the site.

Distance from site: 810m
Bearing: 70°
GPS coordinate: Lat:49 54 46.8 N Long: 06 19 13.7 W
Height 37m Our photo ref: 5980



Church

Site

Viewpoint 13

Location:
View from Buzza Tower.

Distance from site: 240m
Bearing: 10°
GPS coordinate: Lat:49 54 48.4 N Long: 06 18 38.3 W
Height 21m Our photo ref: 6036



Site

VIEWPOINT 14

Location:
View from near Power Plant looking north towards site

Distance from site: 240m
Bearing: 355°
GPS coordinate: Lat:49 54 48.9 N Long: 06 18 35.2 W
Height 23m Our photo ref: IMG 7360

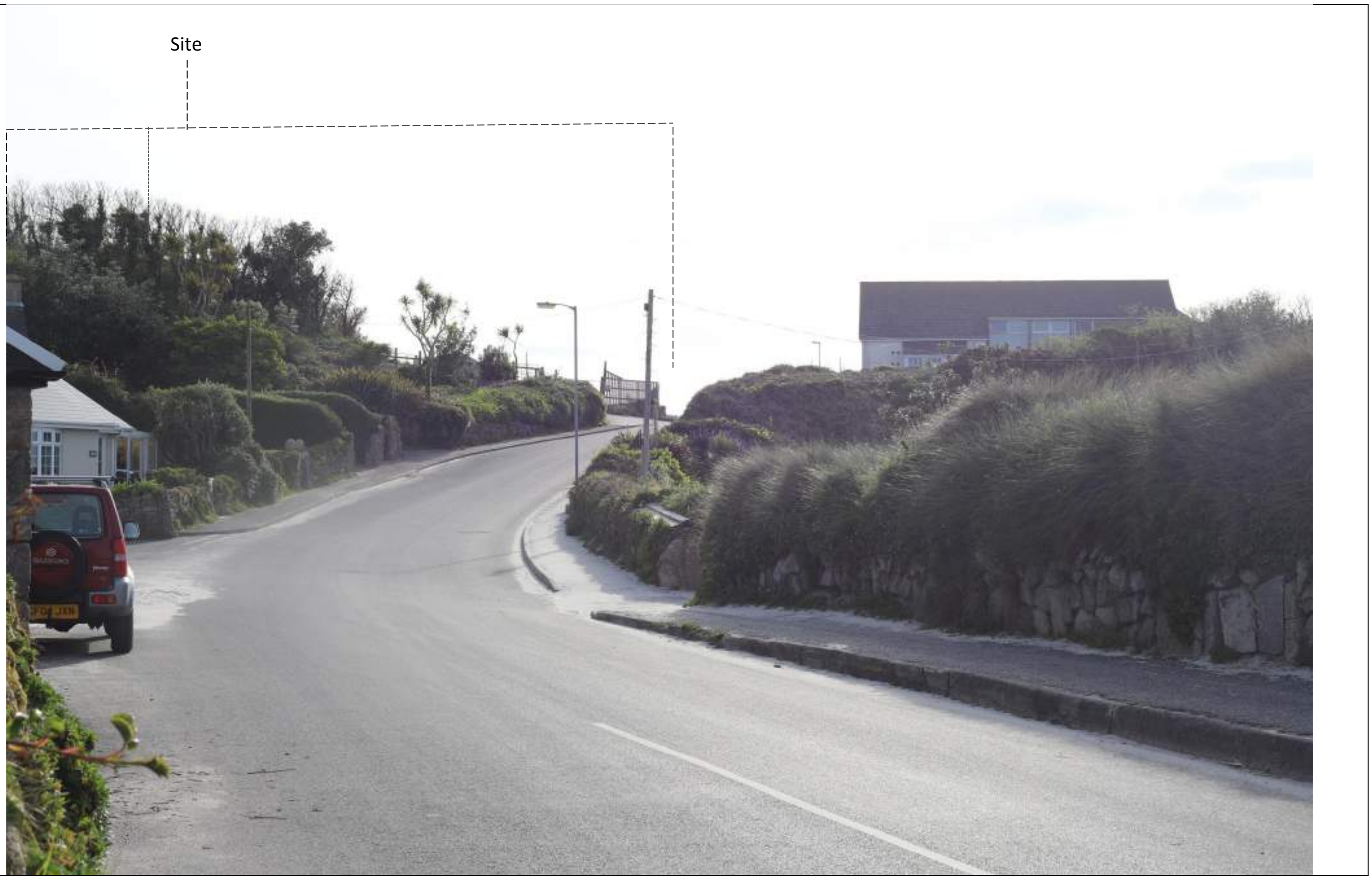


Site

Viewpoint 15

Location:
View from the eastern end of The Strand looking east towards the site

Distance from site: 30m (edge), 100m (centre)
Bearing: 115°
GPS coordinate: Lat:49 54 57.7 N Long: 06 18 41.1 W
Height 8m Our photo ref: 5863



Site

VIEWPOINT 16
See Photomontage D

Location:
View from Telegraph Hill looking west towards the road frontage of the site

Distance from site: 80m (edge) 180m (centre)
Bearing: 260°
GPS coordinate: Lat:49 54 58.7 N Long: 06 18 31.4 W
Height 5m Our photo ref: IMG 5846



VIEWPOINT 17
See Photomontage E

Location:
View from A3111 looking south west toward the site near The Store

Distance from site: 230m
Bearing: 230°
GPS coordinate: Lat:49 55 0.8 N Long: 06 18 26.8 W
Height 5m
Our photo ref: IMG 6971



Site

VIEWPOINT 18

Location:
View from A3111 approaching Hugh Town from the East

Distance from site: 330m
Bearing: 240°
GPS coordinate: Lat:49 55 1.5 N Long: 06 18 20.9 W
Height 8m
Our photo ref: IMG 7201



Site

VIEWPOINT 19
See Photomontage F

Location:
View at Seat on Public Footpath near Porth Mellon Beach looking south west
towards site

Distance from site: 230m
Bearing: 220°
GPS coordinate: Lat:49 55 2.0 N Long: 06 18 28.3 W
Height 6m
Our photo ref: IMG 6749



VIEWPOINT 20
See Photomontage G

Location:
View from Public Footpath following the coast north of Porth Mellon Beach
looking south west towards the site

Distance from site: 350m
Bearing: 205°
GPS coordinate: Lat:49 55 6.7 N Long: 06 18 29.1 W
Height 7m Our photo ref: IMG 5717



VIEWPOINT 21

Location:
View from Harrys Wall Battery looking south south west towards the site

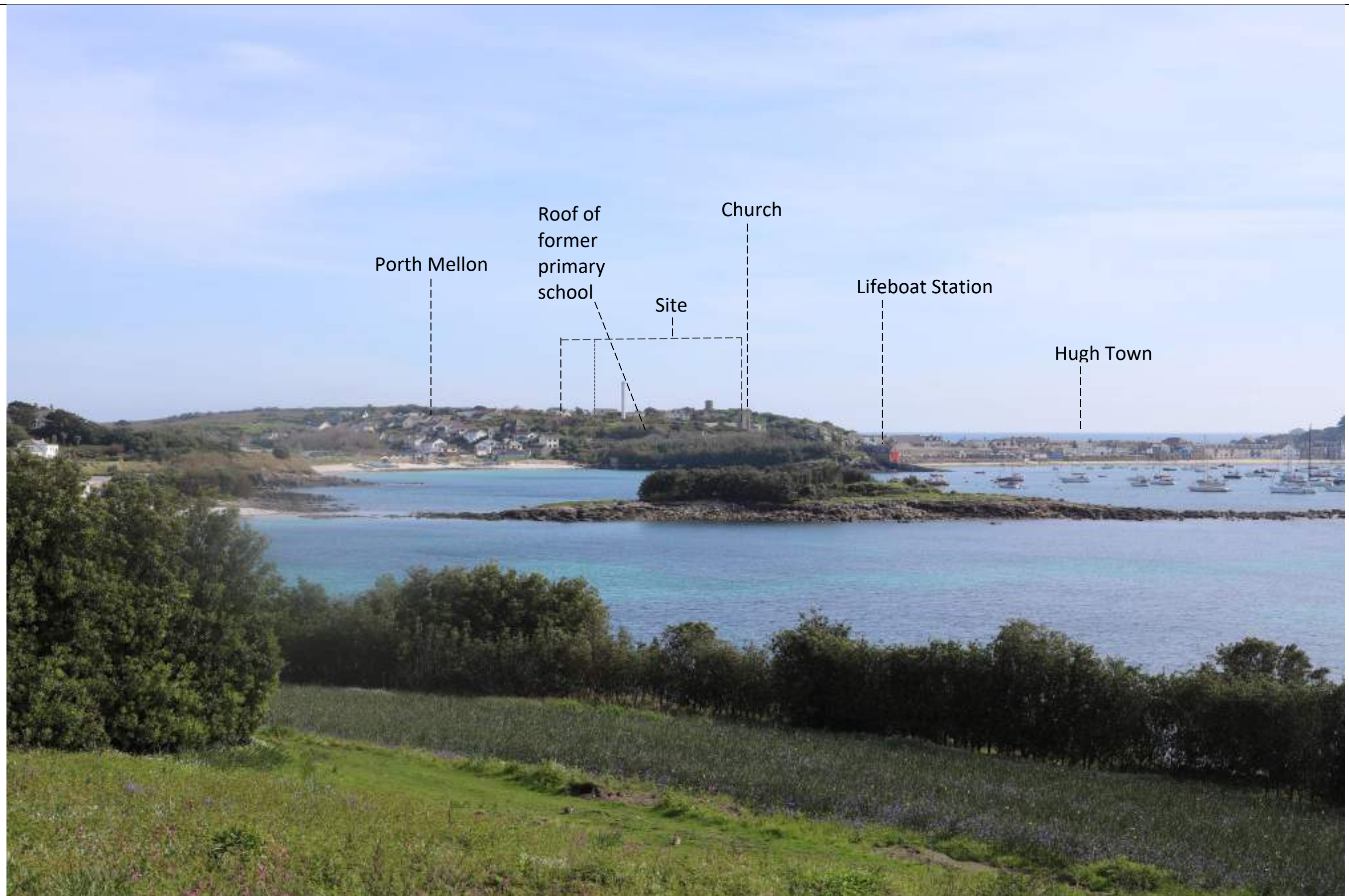
Distance from site: 380m
Bearing: 210°
GPS coordinate: Lat:49 55 5.8 N Long: 06 18 24.7 W
Height 16m Our photo ref: IMG 5811



Viewpoint 22

Location:
View from road in Porthloo, looking across beach towards the site.

Distance from site: 870m
Bearing: 190°
GPS coordinate: Lat:49 55 23.6 N Long: 06 18 27.9 W
Height 15m Our photo ref: 5738



VIEWPOINT 23

Location:
View from footpath running along the coast near the Club House looking south

Distance from site: 1.03km
Bearing: 180°
GPS coordinate: Lat:49 55 29.2 N Long: 06 18 37.3 W
Height 17m Our photo ref: IMG 5754



Panorama at Viewpoint 23P

Location:
View from footpath running along the coast near the Club House looking south

Distance from site: 1.03km
Bearing: 180°
GPS coordinate: Lat:49 55 29.2 N Long: 06 18 37.3 W
Height 17m Our photo ref: 5753-5758



Viewpoint 24

Location:
View looking south from near Carn Morval Point

Distance from site: 1.3km
Bearing: 170°
GPS coordinate: Lat:49 55 36.8 N Long: 06 18 43.6 W
Height 21m Our photo ref: 5763



Panorama at Viewpoint 24P

Location:
View looking south from near Carn Morval Point

Distance from site: 1.3km
Bearing: 170°
GPS coordinate: Lat:49 55 36.8 N Long: 06 18 43.6 W
Height 21m Our photo ref: 5762-57663



VIEWPOINT 25

Location:
View from sea to the north of Carn Thomas looking south in the direction of the site

Distance from site: 1.14km
Bearing: 155°
GPS coordinate: Lat:49 55 30.9 N Long: 06 18 58.4 W
Height 0m Our photo ref: IMG 7115-



VIEWPOINT 26

Location:
View from sea to the north of Carn Thomas off Newfound Island looking south
in the direction of the site

Distance from site: 745m
Bearing: 155°
GPS coordinate: Lat:49 55 17.5 N Long: 06 18 52.6 W
Height 0m Our photo ref: IMG 7140-sharpened



VIEWPOINT 27
See Photomontage H

Location:
View from Airport Entrance –looking West North West towards Hugh Town

Distance from site: 1.07km
Bearing: 275°
GPS coordinate: Lat:49 54 52.3 N Long: 06 17 42.7 W
Height 33m Our photo ref: IMG 7382



VIEWPOINT 28

Location:
View from St Marys Sound to south of the Garrison between Morning Point and
Wras and Gugh looking north east towards the site

Distance from site: 1.38km
Bearing: 35°
GPS coordinate: Lat:49 54 19.0 N Long: 06 19 1.3 W
Height 0m Our photo ref: IMG 7014



VIEWPOINT 29

Location:
View from the sea in Porth Cressa looking north east towards site

Distance from site: 770m
Bearing: 35°
GPS coordinate: Lat:49 54 32.9 N Long: 06 18 58.2 W
Height 0m Our photo ref: IMG 7039



Direction of SITE

VIEWPOINT 30

Location:
View from sea off Old Town Bay looking north west in the direction of the site

Distance from site: 1.40km
Bearing: 315°
GPS coordinate: Lat:49 54 24.6 N Long: 06 17 47.0 W
Height 0m Our photo ref: IMG 7058

PHOTOMONTAGES A – G

Produced by Dunn Marino Associates



VIEWPOINT 2
See Photomontage A

Location:
View from Quay looking south east towards site

Distance from site: 545m
Bearing: 105°
GPS coordinate: Lat:49 55 0.7 N Long: 06 19 2.7 W
Height 2m
Our photo ref: IMG 5891



VIEWPOINT 9
See Photomontage B

Location:
View from the Battery near Garrison Gate looking east towards site

Distance from site: 620m
Bearing: 85°
GPS coordinate: Lat:49 54 55.0 N Long: 06 19 7.3 W
Height 19m Our photo ref: IMG 5904



Site

VIEWPOINT 10
See Photomontage C

Location:
View from Upper Benham Battery looking north east towards the site

Distance from site: 650m
Bearing: 65°
GPS coordinate: Lat:49 54 47.6 N Long: 06 19 5.7 W
Height 15m Our photo ref: IMG 5941



VIEWPOINT 16
See Photomontage D

Location:
View from Telegraph Hill looking west towards the road frontage of the site

Distance from site: 80m (edge) 180m (centre)
Bearing: 260°
GPS coordinate: Lat:49 54 58.7 N Long: 06 18 31.4 W
Height 5m Our photo ref: IMG 5846



VIEWPOINT 17
See Photomontage E

Location:
View from A3111 looking south west toward the site near The Store

Distance from site: 230m
Bearing: 230°
GPS coordinate: Lat:49 55 0.8 N Long: 06 18 26.8 W
Height 5m
Our photo ref: IMG 6971



Site

VIEWPOINT 19
See Photomontage F

Location:
View at Seat on Public Footpath near Porth Mellon Beach looking south west
towards site

Distance from site: 230m
Bearing: 220°
GPS coordinate: Lat:49 55 2.0 N Long: 06 18 28.3 W
Height 6m Our photo ref: IMG 6749



VIEWPOINT 20
See Photomontage G

Location:
View from Public Footpath following the coast north of Porth Mellon Beach
looking south west towards the site

Distance from site: 350m
Bearing: 205°
GPS coordinate: Lat:49 55 6.7 N Long: 06 18 29.1 W
Height 7m Our photo ref: IMG 5717



VIEWPOINT 27
See Photomontage H

Location:
View from Airport Entrance –looking West North West towards Hugh Town

Distance from site: 1.07km
Bearing: 275°
GPS coordinate: Lat:49 54 52.3 N Long: 06 17 42.7 W
Height 33m Our photo ref: IMG 7382

