

CARN THOMAS PLANT SCHEDULE

Number	Species	Girth	Height	Pot Size	Specification
10	Crataegus monogyna	Feathered 6-10cm	2.0-2.5m		C : minimum 5 brks
3	Prunus avium	Feathered 6-10cm	2.0-2.5m		C : minimum 5 brks
3	Quercus petraea	Feathered 6-10cm	2.0-2.5m		C : minimum 5 brks
2	Sorbus aria	6-10cm	2.0-2.5m		C : 3/4 brks
9	Ulmus procera	Feathered 6-10cm	2.0-2.5m		C : minimum 5 brks
Total :27					

Number	Species	Height	Pot Size	Specification
12	Aucuba japonica 'Rozannie'	40-60cm	10L	Bushy; min 6 breaks
3	Cordylina australis	80-100cm	12L	Single stem Good crown
97	Corylus avellana	60-80cm		1+1 : Transplant .BR
18	Crataegus monogyna	60-80cm		1+1 : Transplant .BR
33	Cytisus scoparius	40-60cm	2L	Branched :2/3 brks .C
39	Elaeagnus angustifolia	60-80cm		BR : Branched :3 brks
104	Erica cinerea	10-20cm	1L	C :Several shoots
18	Escallonia 'Iveyi'	40-60cm	3L	C :Bushy :4 brks
273	Escallonia rubra macrantha	60-80cm	3L	C :Bushy :4 brks
95	Euonymus jap. Green Rocket	30-40cm	3L	C :Branched :3/4 brks
36	Fuchsia 'Riccartonii'	60-80cm	3L	C :Hedging; Bushy :5 brks
36	Hydrangea macrophylla 'Blue Wave'	30-40cm	3L	C :Branched :3 brks
18	Ilex aquifolium	30-40cm	3L	Bushy :C
9	Lavatera 'Rosea'	40-60cm	3L	C :Branched :3 brks
37	Lonicera nitida 'May Green'	40-60cm	3L	C :Bushy :3 brks
31	Mahonia aquifolium	30-40cm	3L	C :Branched :3/4 brks
172	Olearia traversii	40-60cm	3L	C :Bushy :3 brks
15	Phormium 'Yellow Wave'	40-60cm	3L	C :7 leaves :7 brks
84	Phormium tenax	40-60cm	3L	C :7 leaves :7 brks
18	Prunus avium	60-80cm		1+1 : Transplant .BR
18	Prunus spinosa	60-80cm		1+1 : Transplant .BR
18	Salix cinerea	60-80cm		1+1 :BR
13	Salix viminalis	60-80cm		Branched :0/1 :2/3 brks
51	Sambucus nigra	60-80cm		1+1 : Transplant .BR
7	Sarcococca humilis	20-30cm	3L	C :Bushy :5/6 brks
39	Ulex europaeus	30-40cm	2L	Bushy :C
52	Ulex gallii	30-40cm	2L	Bushy :C
33	Ulmus glabra	60-80cm		1+1 : Transplant .BR
18	Ulmus procera	60-80cm		1+1 : Transplant .BR
31	Vaccinium myrtillus	30-40cm	2L	Bushy :2/3 brks .C
9	Viburnum hillieri 'Winton'	30-40cm	3L	C :Branched :3 brks
8	Viburnum tinus 'Eve Price'	30-40cm	3L	C :Bushy :4 brks
24	Vinca major	20-30cm	2L	C :Several shoots
128	Vinca minor	10-20cm	2L	C :Several shoots
38	Vinca minor 'Alba'	10-20cm	2L	C :Several shoots
Total :1638				

Number	Species	Pot Size	Specification
99	Agapanthus forma		
46	Anemathellele leesoniana	2L	Full Pot
39	Geranium maderense	2L	Bushy :Full pot
39	Geranium nodosum	2L	Full pot
96	Geranium Rozanne	2L	Full pot
130	Libertia formosa	1-1.5L	Full pot
25	Osteospermum 'Cannington Roy'	1L	Full pot
25	Osteospermum jucundum	1L	Full pot
10	Sedum 'Autumn Joy'	2L	Full Pot :4 Buds
Total :509			

Number	Species	Specification
42	Deschampsia cespitosa	Bushy :Full pot

Green roof -
150mm local soil substrate with <20% organic content. Seeded with flora element of the coastal meadow mix BSF11 sown at 1.5g/m2 and planted with British Native Plug Plants min 55cc plugs @ 13 plants per m2 approx.
300no. plug plants of the following species
15% Armeria maritima - (Thrift)
5% Echimium vulgare - (Viper's Bugloss)
5% Galium verum - (Lady's Bedstraw)
5% Lotus Corniculatus - (Bird's-Foot Trefoil)
15% Sedum album - (Biting Stonecrop)
20% Sedum anglicum - (English Stonecrop)
5% Silene maritima - (Sea Campion)
5% Saponaria officinalis - (Soapwort)
5% Spergularia rupicola - (Rock Spurrey)
10% Thymus praecox - (Wild Thyme)
5% Cochlearia officinalis - (Scurvy Grass)
5% Tripleurospermum maritimum - (Sea Mayweed)
Plug plants planted in groups of 4-6 plants of same species.
Green roof to be irrigated for first 12-18 months to ensure plant establishment.

OUTLINE SOFT LANDSCAPE SPECIFICATION

Planting design should be reassessed following site groundworks to ensure ground conditions meet the requirements for the proposed planting. In addition planting to be assessed against locally available and plants of local provenance at time of ordering material. Any variations required to be agreed with the project landscape architect, ecologist and Isles of Scilly Council.

All ground preparation and planting operations shall comply with BS4428 (1989) Code of Practice for General Landscape Operations and in accordance with good horticultural practice. Clean site topsoil and subsoil to be used beneath soft landscape areas and in planting areas to appropriate rooting depth for plants species. If suitable rooting depths cannot be achieved due to ground conditions encountered consult with project landscape architect. Ground beneath topsoil to be free draining with remedial action to be carried out to alleviate any compaction and poor drainage. Compost should be from locally available sources.

PLANTS, NURSERY STOCK AND HANDLING - All trees and shrubs to be to BS 3936 and National Plant Specification (HTA) and as scheduled, no substitutions unless agreed with landscape architect. All plant handling should conform to National Planting Specification Code of Conduct.

Soft landscape material should be sourced based on a hierarchical approach. In the first instance plant material shall be source using native plants of local provenance to the Isles of Scilly or plants grown and propagated on the islands. Where this is not possible plants and plant material should be propagated and grown originate from Cornwall or reputable growers in the UK.

Strict bio-security measures shall be put in place when importing from the mainland to reducing the risk of introducing or spreading invasive non-native species and other harmful organisms such as diseases in the wild. A plant passport system should be used to make sure that plants being moved within Great Britain are healthy and traceable.

PLANTING SEASON - If planting outside normal planting season, (November to March), all plants must be container grown and extra watering provided, subject to weather, to ensure plant establishment. Bare root stock is only to be planted between November to March. Plant material should be watered during the first planting season to aid establishment.

TREES
Trees to be planted in accordance with BS 8545. Bare root trees to be planted between November to March. Trees to be planted in prepared tree pits minimum 1x1x 0.8m, base of pit broken by 150 to facilitate drainage, sides scarified, backfilled with layer of free draining subsoil and final 400mm depth of mix of topsoil and peat free proprietary tree and shrub planting compost at a ratio of 3:1. Incorporate mycorrhizal compound around bare root trees to manufacturer's recommendations. Fix tree staking into firm ground below pit before planting, backfill in 150mm lightly consolidated layers after planting. For Standard, Light standard and feathered trees stake with a single low 75mm machine round timber stake and secured with 1no. rubber buckle tie. For root ball or container grown trees stake with a low double stake and rubber cross strap. Water all trees thoroughly on completion and for first 2 growing seasons after planting.

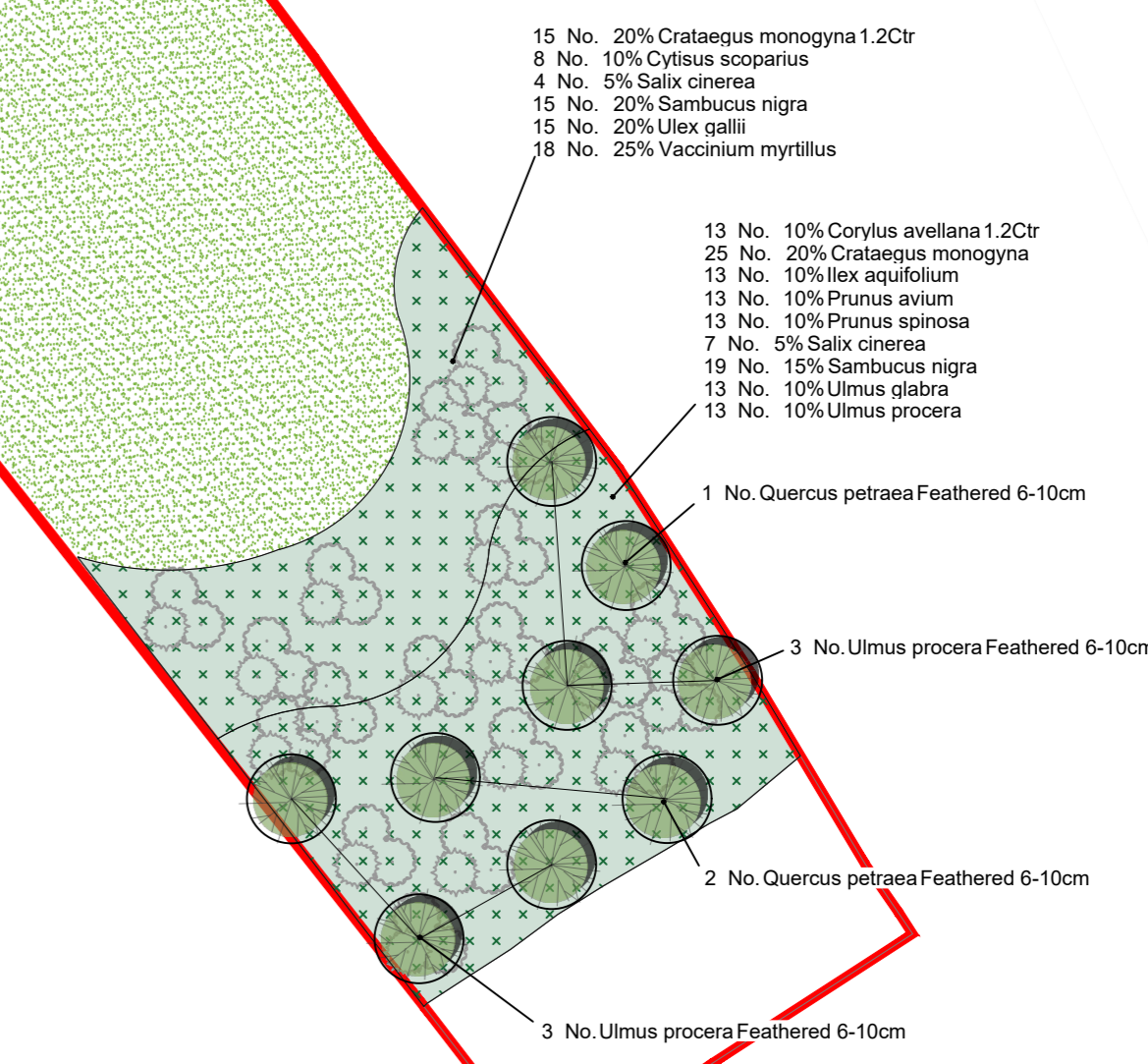
NATIVE TRANSPLANTS - at time of planting root dip bare root transplants with mycorrhizal compound and notch plant. For container grown plants, pit plant. Ensure all new planting is well watered at time of planting and 600mm dia at base of each plant is kept free from weed.

AMENITY SHRUB AND AMENITY HEDGE PLANTING - 400mm topsoil depth - rooting depth min 600mm-750mm
Final cultivation of top 150mm of soil to incorporate 100mm depth of peat free compost. Pit plant stock, planting to nursery mark, firm and water on completion. Mulch area with 75mm depth of bark mulch, or membrane and gravel chipping subject to location and wind exposure. Ensure no plants are covered.

GRASS TO GARDENS - minimum of 150mm topsoil -rooting depth min 300mm
Cultivate topsoil to create a firm bed with a fine tilth removing stones exceeding 25mm incorporating a pre-seeding fertilizer at the rate recommended by the manufacturer. Carry out work in Autumn or early spring, seed or lay lawn turf in accordance with good horticultural practice. Allow watering if required to aid initial establishment.

NATIVE WILD GRASS AND FLORA - Seeded on low fertility site soils. Areas to be seeded to be assessed to determine and agree the appropriate method of seeding. Areas to be prepared clear of pernicious weeds. Steep areas to be hydroseeded, other areas seeded by hand. Area to be managed subject to seed mix.

GREEN ROOF - min 150mm depth of selected local substrate. Area to be seed and plug planted with native flora. Area to be irrigated during 18months as required to aid establishment of the plants.



P2	01-05-24	Update to suit architects relocation of binstore
P1	15-04-24	Planning Issue
Rev.	Date	

Foxford Design
Chartered Landscape Architects
Huntsdon Tiverton Devon EX16 7QH
Tel : 01884 - 821786

Project
Housing - Carn Thomas, St Marys
Drawing
Planting Plan

Client LIVE WEST	Date 05-09-2022	Drawn CF	Drawing number 2225-02	Revision P2
	Scale 1:250@A1	Status planning		