

4 June 2024

Planning Statement

Description_ Proposed replacement fenestration including new doors

Address_ 1 – 6 Branksea House, Church Road, Hugh Town, Isles of Scilly, TR21 0NA

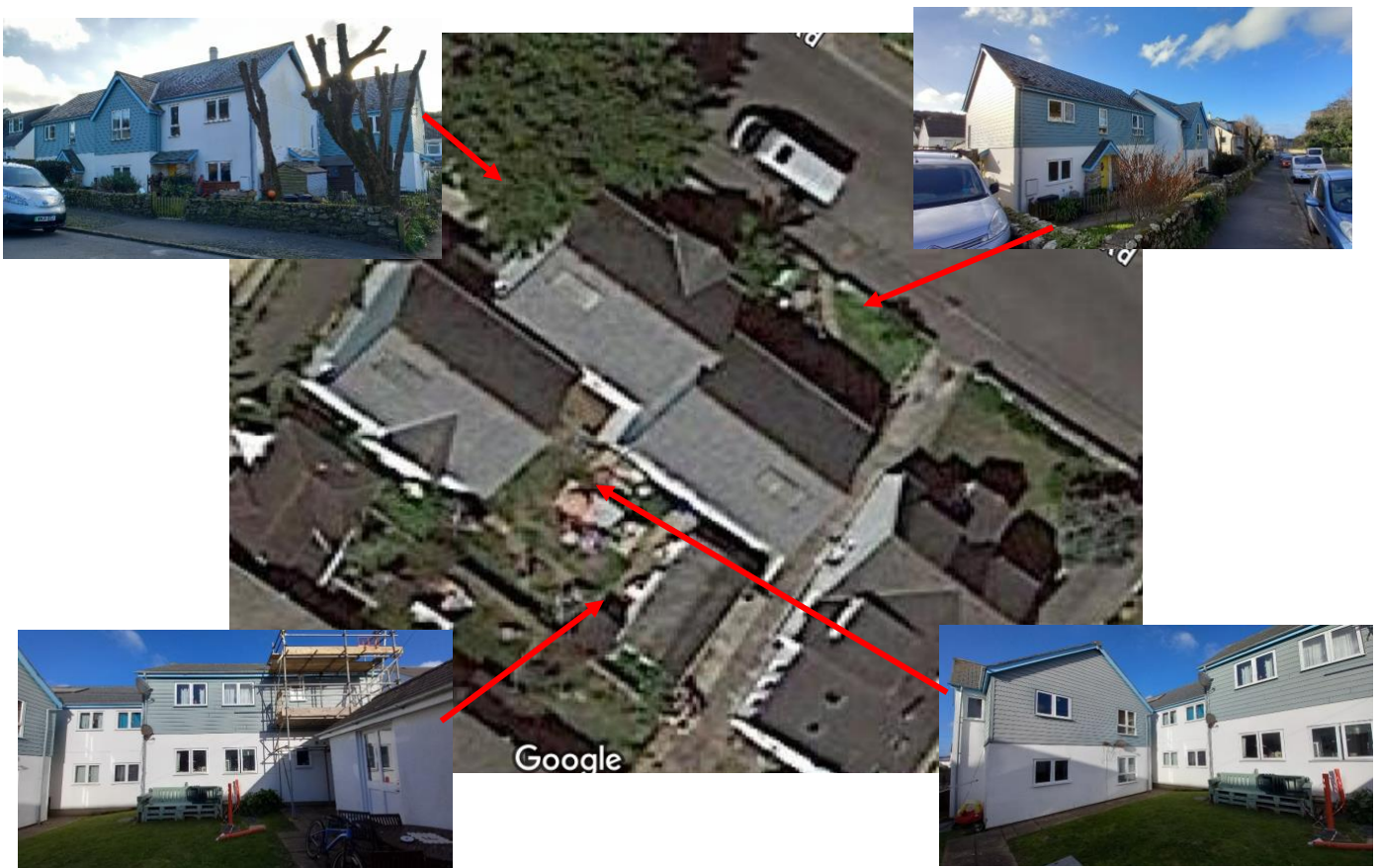
Applicant_ LiveWest

Background

Branksea House comprises three purpose-built residential properties built in 2005 and owned by LiveWest as a social housing provider.

With concrete block construction, the elevations are painted render finish to the lower half and timber style cladding at first floor level. The property includes 6nos two-bedroom flats, each with its own independent entrance.

These entrance doors are currently metal fire doors and are in poor condition. An example is the door to No.5 which is suffering rust, a missing letter plate, water penetration through the glazing and around the frame, a detached storm guard, and has a broken door handle with a temperamental lock. All six doors are in a similar condition.





Existing Doors (1 – 6 Branksea House)





Proposed Replacement Doors (1 – 6 Branksea House)



The proposal seeks replacement doors manufactured in a more durable, marine resistant composite UPVC, and coloured yellow, with gold ironmongery to match the existing.

In addition, the overall style of door would alter with a four-panel style, and larger glazed areas to maximise natural light, reducing the potential energy consumed by artificial light needed during daytime hours.

Prepared by,

Andrew Golay MRTPI
Chartered Town Planner