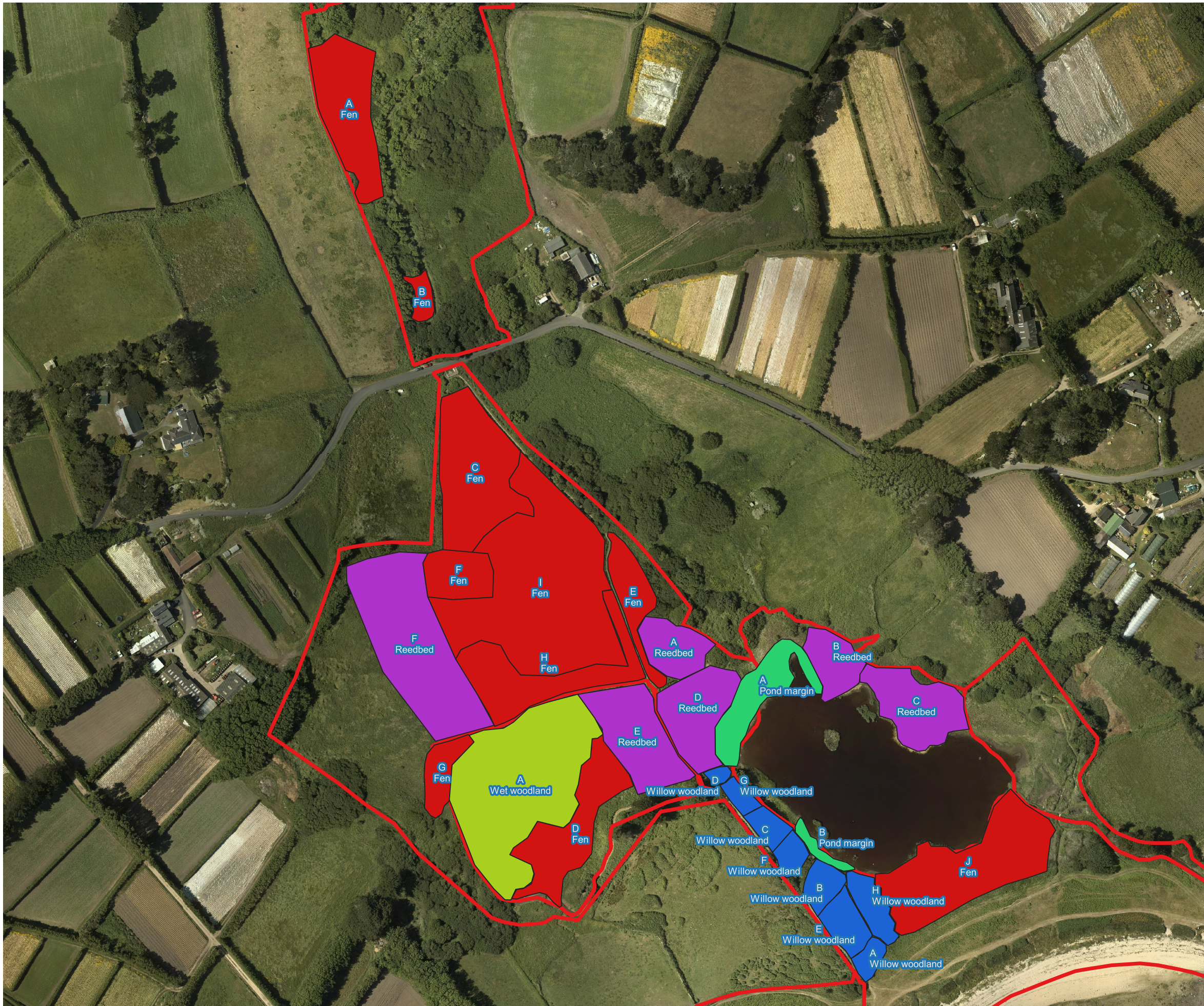


Higher Moors rotational cutting



ID	Hab type	Yearly	Year	Cuts p.a	Area
A	Fen	Yes		2	0.24
B	Fen	Yes		2	0.03
C	Fen	Yes		1	0.32
D	Fen	Yes		2	0.22
E	Fen	Yes		1	0.1
F	Fen	Yes		1	0.1
G	Fen	Yes		2	0.07
H	Fen	Yes		1	0.23
I	Fen				0.72
J	Fen				0.37
A	Pond margin	Yes		3	0.15
B	Pond margin	Yes		3	0.02
A	Reedbed	No	1	1	0.1
B	Reedbed	No	1	1	0.09
C	Reedbed	No	2	1	0.18
D	Reedbed	No	3	1	0.17
E	Reedbed	No	4	1	0.21
F	Reedbed				0.44
A	Wet woodland				0.56
A	Willow woodland	No	1	1	0.03
B	Willow woodland	No	2	1	0.05
C	Willow woodland	No	3	1	0.04
D	Willow woodland	No	4	1	0.01
E	Willow woodland	No	5	1	0.06
F	Willow woodland	No	6	1	0.03
G	Willow woodland	No	7	1	0.02
H	Willow woodland	No	8	1	0.06

RECEIVED
By Liv Rickman at 10:35 am, Aug 01, 2024