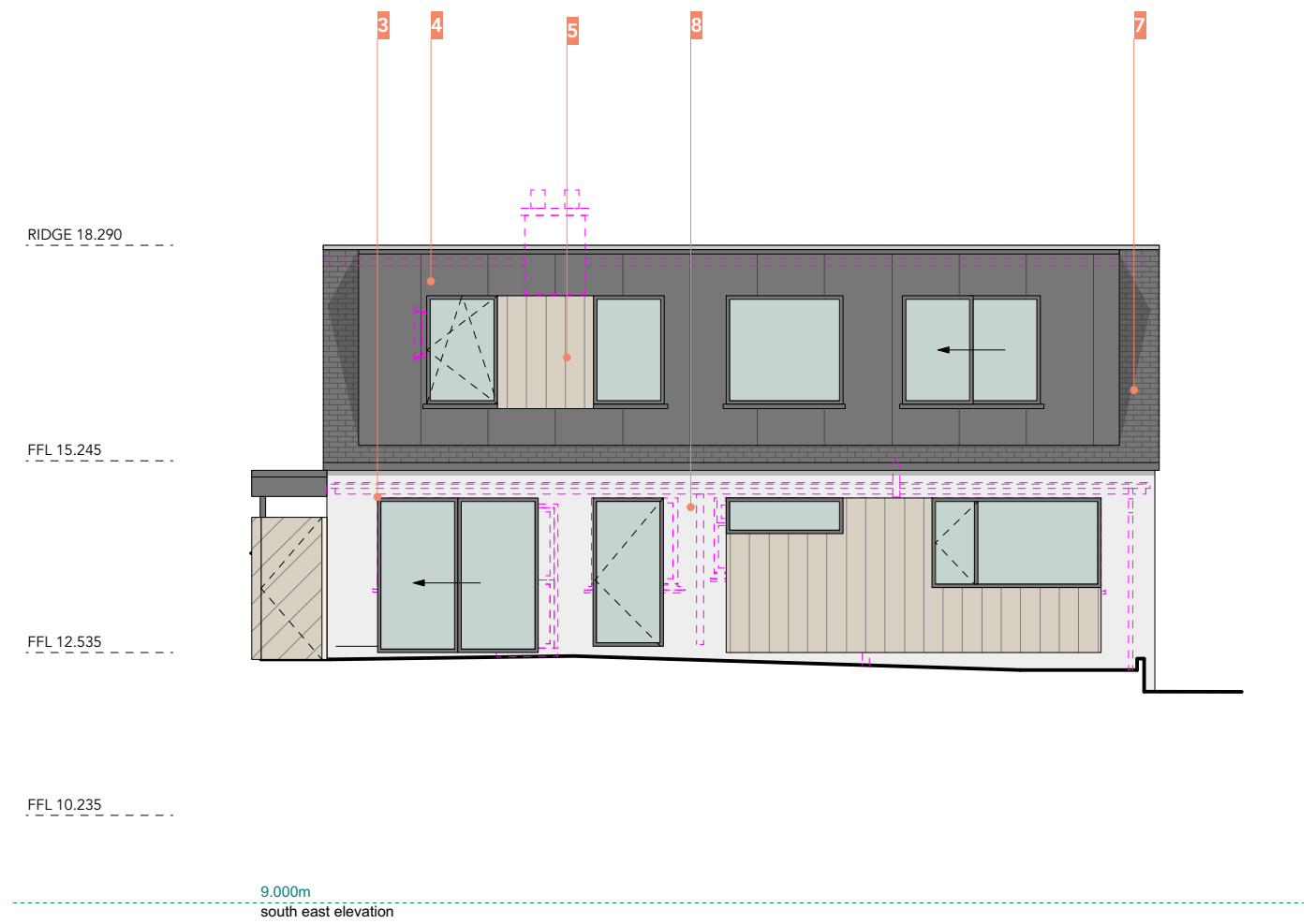
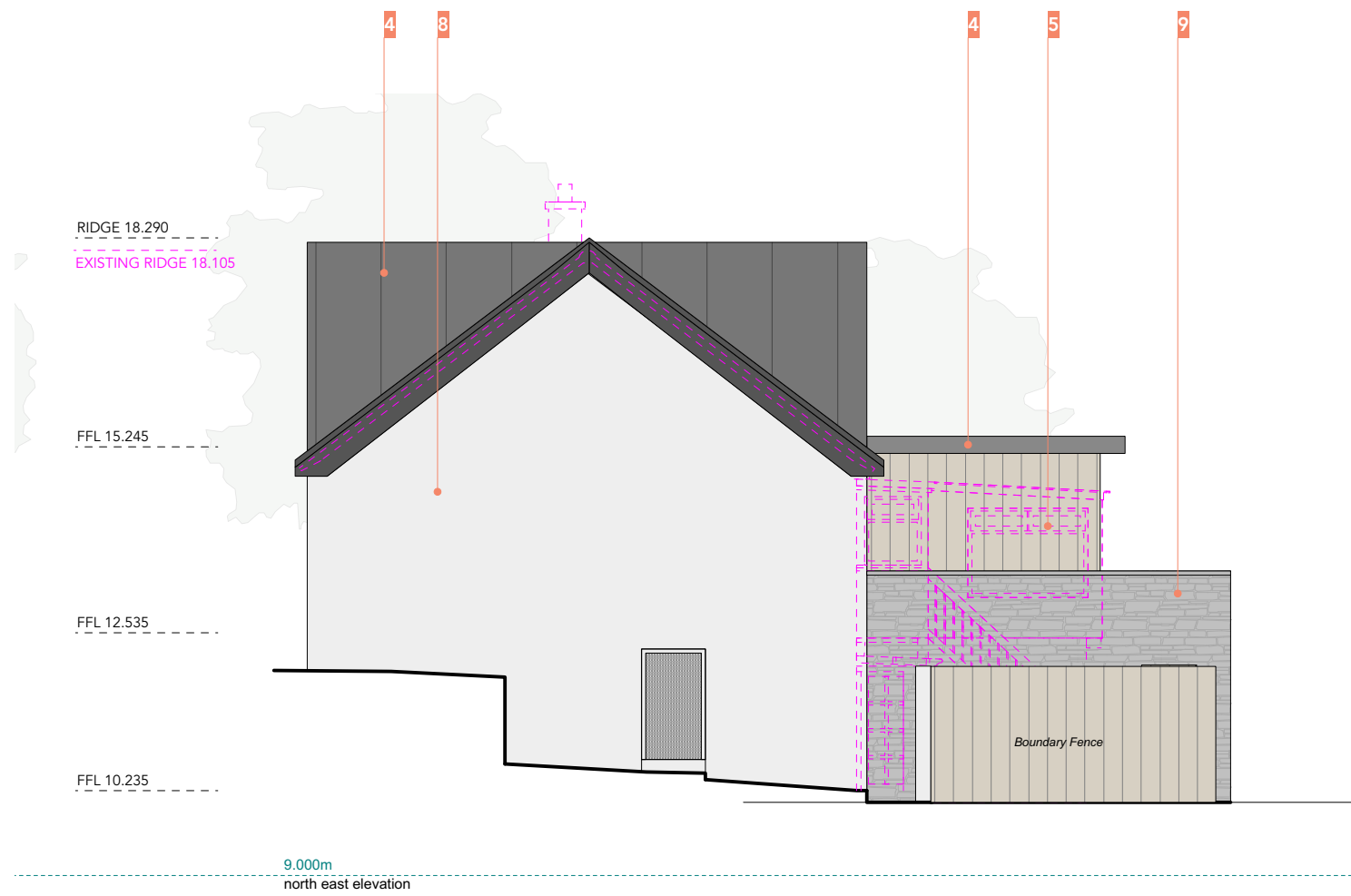


RECEIVED

By Liv Rickman at 3:28 pm, Aug 27, 2024



PROPOSED NORTH EAST ELEVATION
SCALE: 1:100

PROPOSED SOUTH EAST ELEVATION
SCALE: 1:100

Materials

- 1 - Glass balustrade
- 2 - Grey aluminium
- 3 - Dark grey framed glazing
- 4 - Dark grey zinc to match roof tiles
- 5 - Vertical timber cladding
- 6 - Timber louvre privacy screen
- 7 - Slate tiles
- 8 - Painted render
- 9 - Stone cladding

