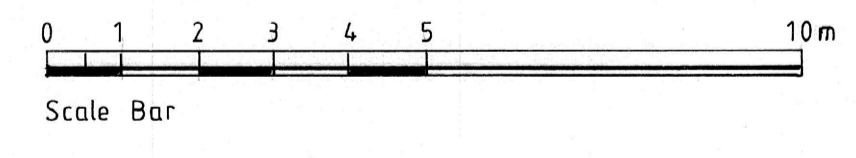
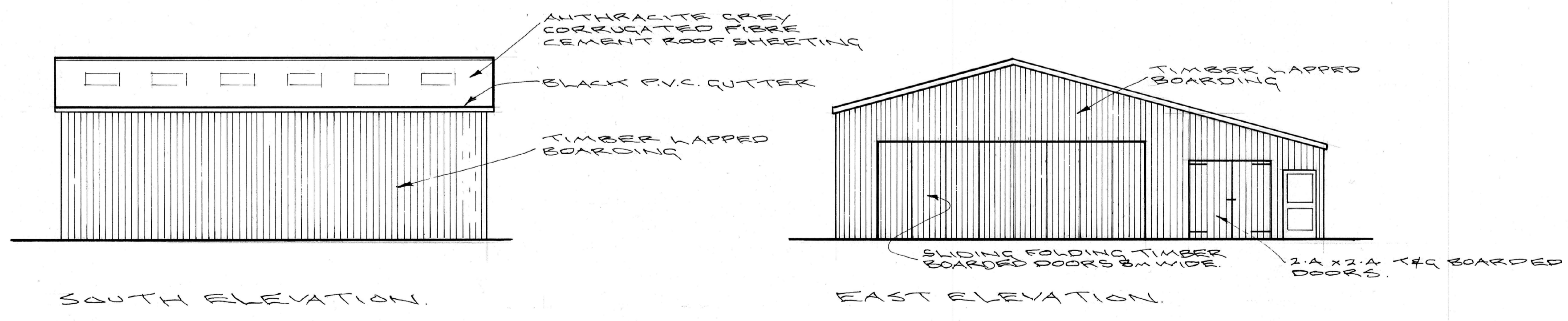
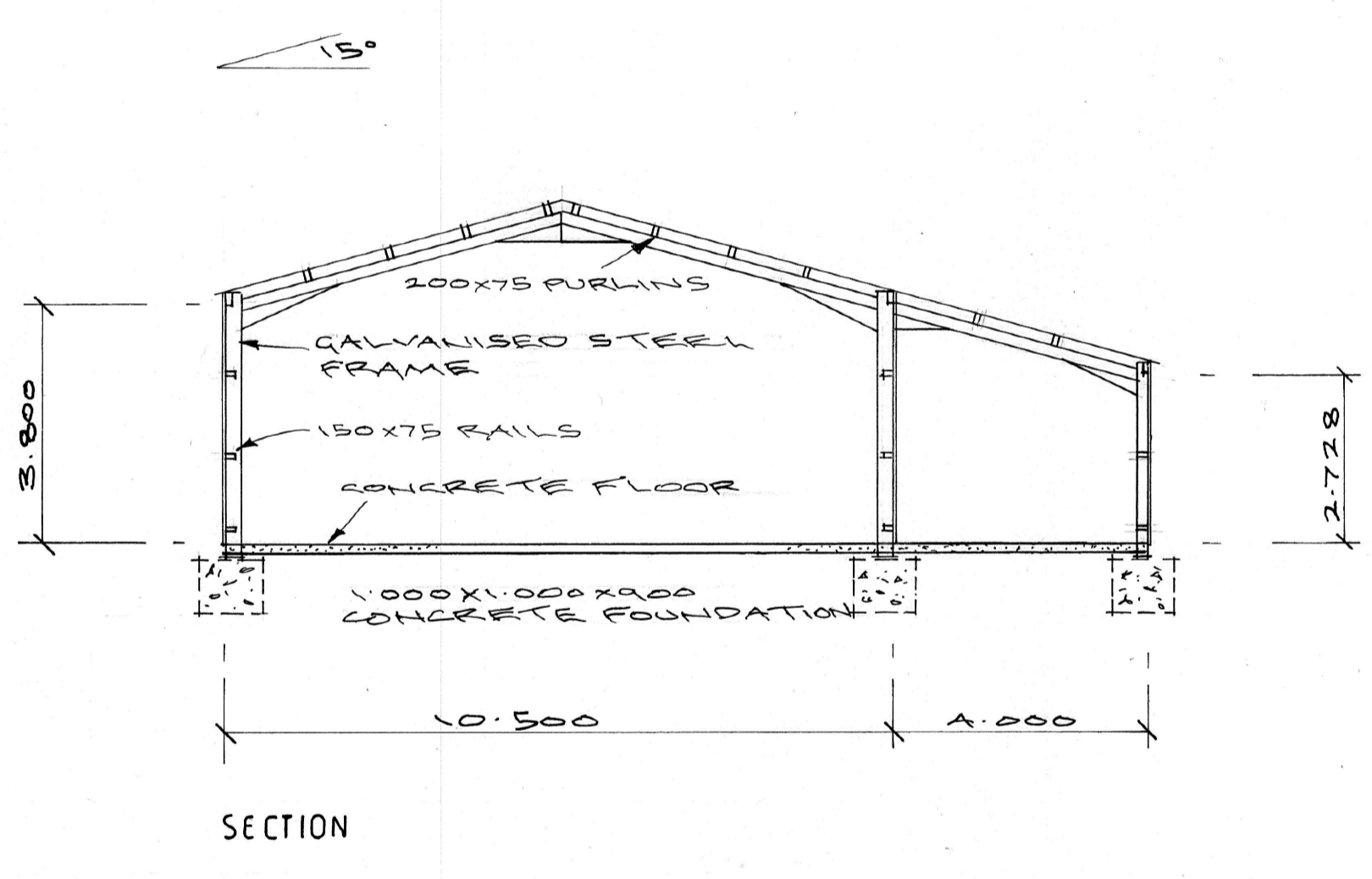
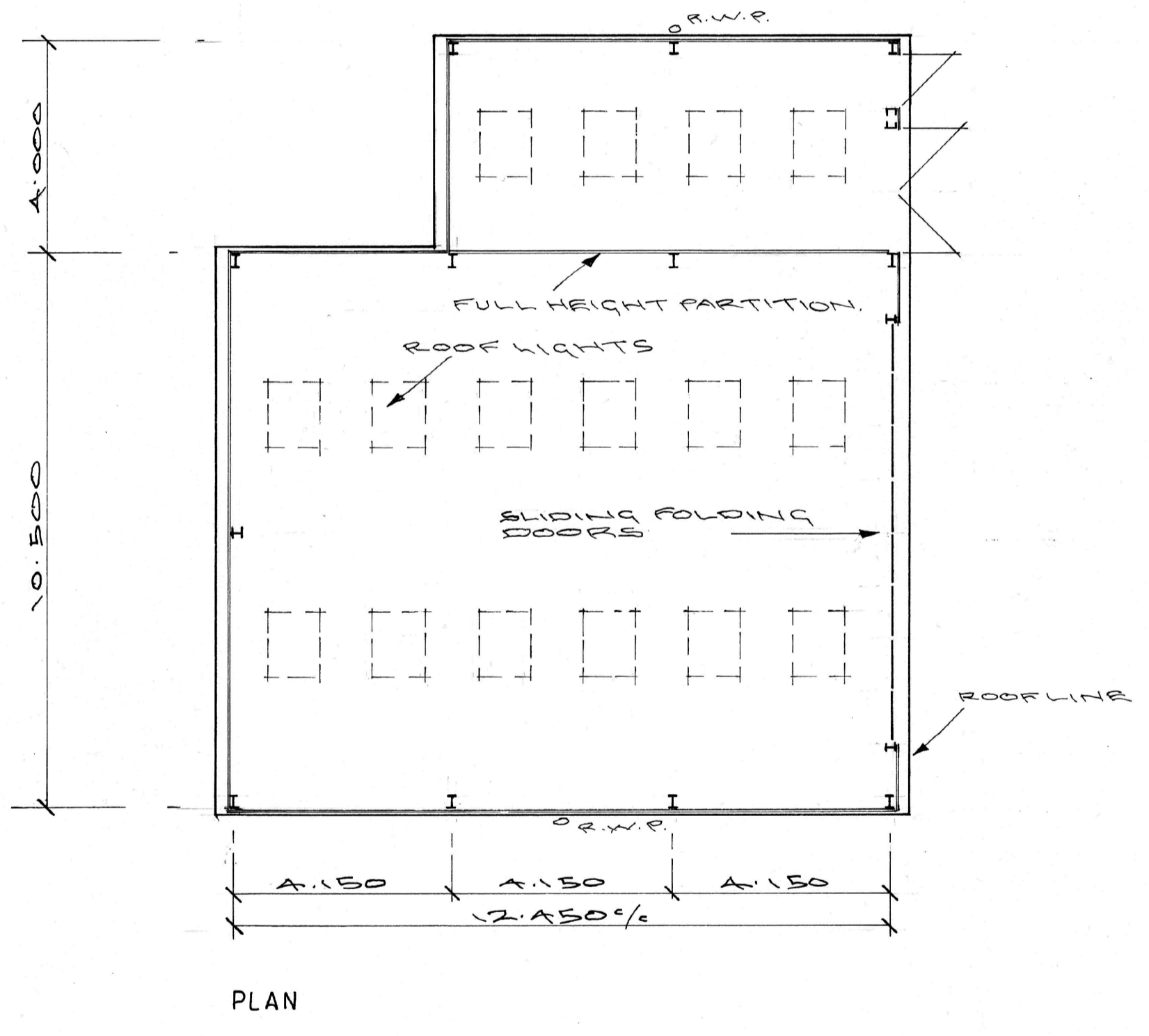
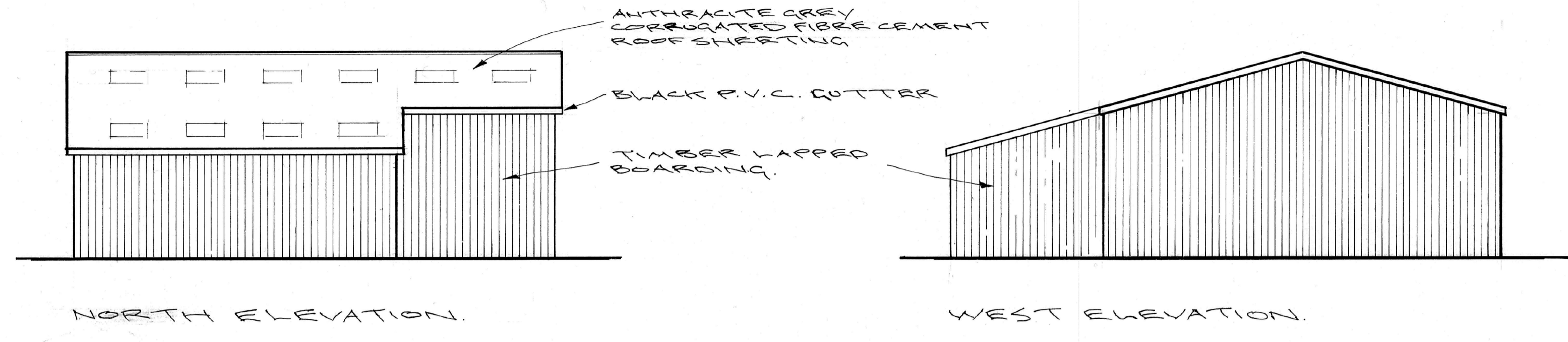
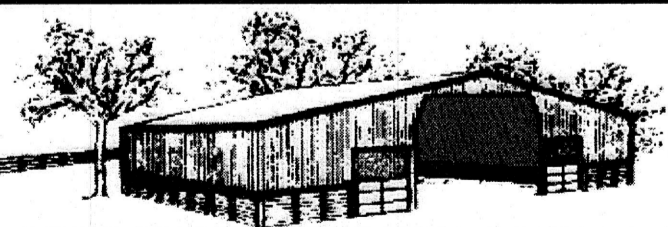


**RECEIVED**  
 By Liv Rickman at 3:40 pm, Feb 18, 2025



 <p><b>Fingle Farm Buildings Ltd</b>        West Fingle Farm • Drewsteignton        Devon EX6 6NJ        Telephone/Fax: (01647) 281226        fb@loram.eclipse.co.uk</p>	
<p><b>PROJECT:</b>          PROPOSED STEEL FRAME BUILDING AT ISLAND OUTBOARD SERVICES PORTALOO WORKSHOP ST. MARYS ISLES OF SCILLY</p>	<p><b>DATE:</b> 06.02.2025  <b>SCALE:</b> 1:100 @ A1  <b>DRG. NO.</b> 1A56  <b>DRAWN BY:</b> J.L.</p>
<p><b>CLIENT:</b>          ISLAND OUTBOARD SERVICES</p>	<p><b>AMENDMENTS:</b></p>