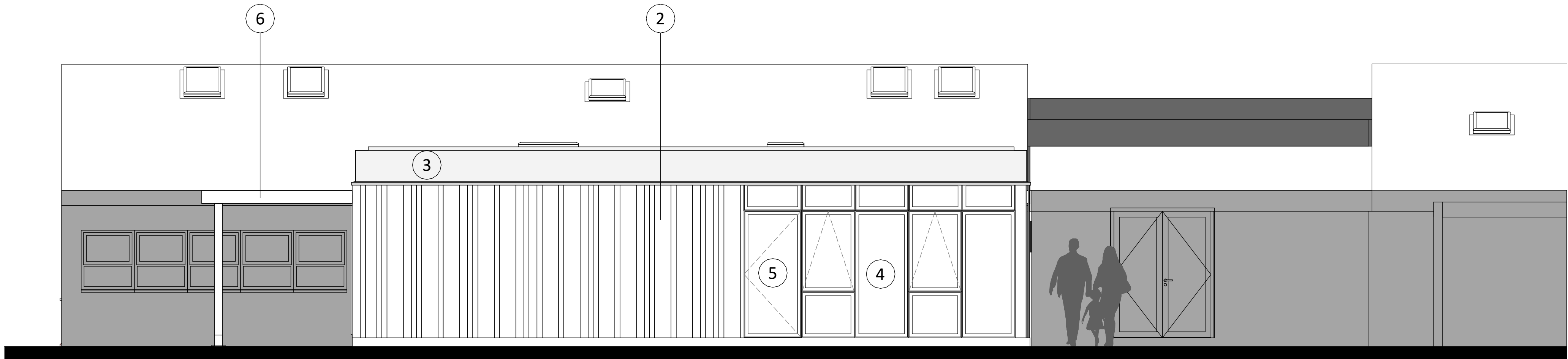


Proposed North Elevation
1 : 50



Proposed East Elevation
1 : 50



Contractors to check all dimensions on drawings.

Any discrepancies must be reported to KTA Architects Ltd or the contract administrator before proceeding.

Do not scale except for planning purposes, work to figured dimensions.

A Fire Consultant must be appointed for this project. KTA drawings & schedules to be read in conjunction with the Fire Consultant Fire Strategy Report.

The Fire Strategy Report takes precedence over any KTA drawing or schedule & any discrepancy should be brought to KTA's attention.

This drawing must be read in conjunction with all relevant consultants drawings.

This drawing is © KTA Architects Ltd.

Revision Schedule			
Revision Number	Revision Date	Revision Description	Issued/ Authorised by
Ob. : Obscure Glazing			
Proposed Materials			
1. Colour coated louvres (ventilation)			
2. Timber cladding			
3. Colour coated metal fascia			
4. Colour coated aluminium windows			
5. Colour coated aluminium doorsets			
6. Timber 'pergola'			

RECEIVED

By Tom.Anderton at 10:45 am, Dec 23, 2025

PLANNING

KTA

Architects | Urban Designers

Winslade House, Winslade Park, Manor Drive,
Clyst St. Mary, Exeter, EX5 1FY

Tel: 01392 360338
Email: kt@kta.uk.com
Web: www.kta.uk.com

Project

**Belonging and Inclusion Hub,
Carn Gwarvel, St Marys.**

Title

**Proposed North and East
Elevations**

Author	Chkd by	Scale	1 : 50	@ A1
Author	Checker	Status		
24124	Prelim			
Drawing number				
24124-KTA-A-0401				

OMP 128 v1.0 - 24/11/2022